

CHUWY ONE DEPARTURE (RNAV)

AL-9077 (FAA)

DENVER INTL (DEN)
DENVER, COLORADO

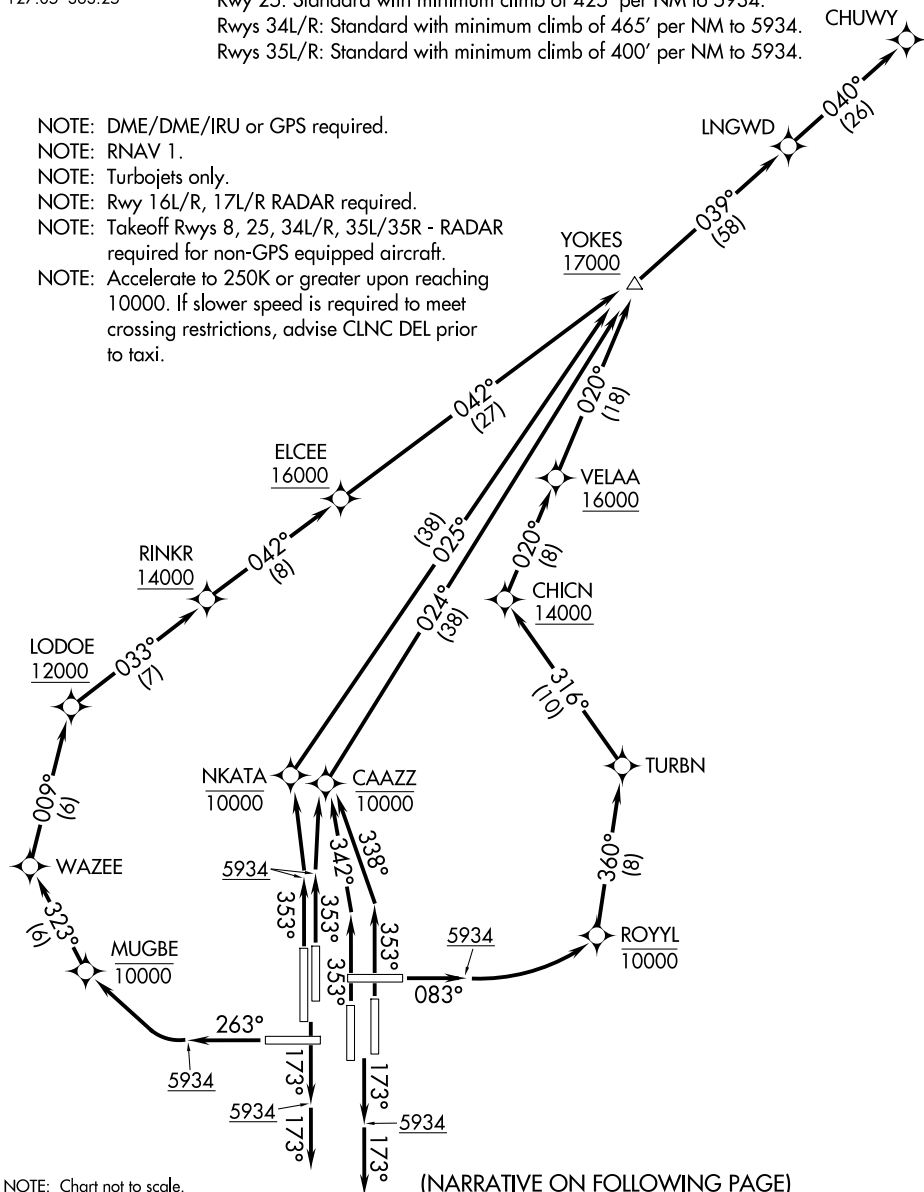
D-ATIS DEP
134.025
CLNC DEL
118.75
CPDLC
DENVER DEP CON
127.05 363.25

TAKEOFF MINIMUMS

- Rwys 7, 26: NA-ATC.
- Rwy 8: Standard with minimum climb of 400' per NM to 5934.
- Rwys 16L/R, 17L/R: Standard.
- Rwy 25: Standard with minimum climb of 425' per NM to 5934.
- Rwys 34L/R: Standard with minimum climb of 465' per NM to 5934.
- Rwys 35L/R: Standard with minimum climb of 400' per NM to 5934.

**TOP ALTITUDE:
FL230**

- NOTE: DME/DME/IRU or GPS required.
- NOTE: RNAV 1.
- NOTE: Turbojets only.
- NOTE: Rwy 16L/R, 17L/R RADAR required.
- NOTE: Takeoff Rwys 8, 25, 34L/R, 35L/35R - RADAR required for non-GPS equipped aircraft.
- NOTE: Accelerate to 250K or greater upon reaching 10000. If slower speed is required to meet crossing restrictions, advise CLNC DEL prior to taxi.



NOTE: Chart not to scale.

(NARRATIVE ON FOLLOWING PAGE)

CHUWY ONE DEPARTURE (RNAV)

SW-1, 11 JUN 2026 to 09 JUL 2026

SW-1, 11 JUN 2026 to 09 JUL 2026



DEPARTURE ROUTE DESCRIPTION
SEE ADDITIONAL REQUIREMENTS ON AAUP

TAKEOFF RUNWAY 8: Climb on heading 083° to 5934, then climbing left turn direct to cross ROYYL at or below 10000, then on track 360° to TURBN, then on track 316° to cross CHICN at or above 14000, then on track 020° to cross VELAA at or above 16000, then on track 020° to cross YOKES at or above 17000, thence. . . .

TAKEOFF RUNWAYS 16L/R, 17L/R: Climb on heading 173° to 5934, then on heading 173° or as assigned by ATC, expect vectors to cross YOKES at or above 17000, thence. . . .

TAKEOFF RUNWAY 25: Climb on heading 263° to 5934, then climbing right turn direct to cross MUGBE at or below 10000, then on track 323° to WAZEE, then on track 009° to cross LODOE at or above 12000, then on track 033° to cross RINKR at or above 14000, then on track 042° to cross ELCEE at or above 16000, then on track 042° to cross YOKES at or above 17000, thence. . . .

TAKEOFF RUNWAY 34L: Climb on heading 353° to 5934, then climb direct to cross NKATA at or below 10000, then on track 025° to cross YOKES at or above 17000, thence. . . .

TAKEOFF RUNWAY 34R: Climb on heading 353° to 5934, then climb direct to cross CAAZZ at or below 10000, then on track 024° to cross YOKES at or above 17000, thence. . . .

TAKEOFF RUNWAY 35L: Climb on heading 353° to intercept course 342° to cross CAAZZ at or below 10000, then on track 024° to cross YOKES at or above 17000, thence. . . .

TAKEOFF RUNWAY 35R: Climb on heading 353° to intercept course 338° to cross CAAZZ at or below 10000, then on track 024° to cross YOKES at or above 17000, thence. . . .

. . . .on track 039° to LNGWD, then on track 040° to CHUWY. Maintain FL230 or filed lower altitude. Expect higher filed altitude ten minutes after departure.

SW-1, 11 JUN 2026 to 09 JUL 2026

SW-1, 11 JUN 2026 to 09 JUL 2026