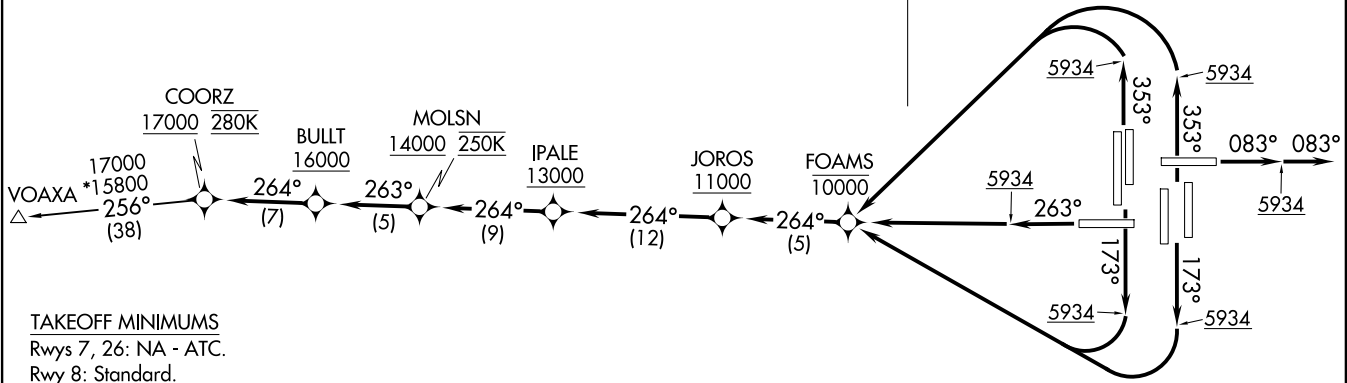


RNAV 1 - DME/DME/IRU or GPS.  
 TAKEOFF Rwy 8 RADAR required.  
 TAKEOFF Rws 16L/R, 17L/R, 25, 34L/R, 35L/R  
 RADAR required for non-GPS equipped aircraft.

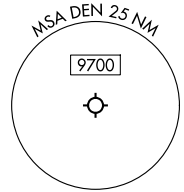
**TOP ALTITUDE:  
 FL230**

DENVER DEP CON  
 126.1 360.75  
 D-ATIS DEP  
 134.025  
 CLNC DEL  
 118.75  
 CPDLC

NOTE: Turbojets only.  
 NOTE: Accelerate to 250K upon reaching 10000. If slower speed is required  
 to meet crossing restrictions, advise CLNC DEL prior to taxi.



**TAKEOFF MINIMUMS**  
 Rws 7, 26: NA - ATC.  
 Rwy 8: Standard.  
 Rwy 16L: Standard with minimum climb of 400'/NM to 5934, then minimum climb of 215'/NM to 16000.  
 Rwy 16R: Standard with minimum climb of 480'/NM to 5934, then minimum climb of 215'/NM to 16000.  
 Rwy 17L: Standard with minimum climb of 400'/NM to 5934.  
 Rwy 17R: Standard with minimum climb of 400'/NM to 5934, then minimum climb of 205'/NM to 16000.  
 Rwy 25: Standard with minimum climb of 425'/NM to 5934, then minimum climb of 225'/NM to 16000.  
 Rwy 34L: Standard with minimum climb of 400'/NM to 5934, then minimum climb of 215'/NM to 16000.  
 Rwy 34R: Standard with minimum climb of 400'/NM to 5934, then minimum climb of 210'/NM to 16000.  
 Rwy 35L: Standard with minimum climb of 360'/NM to 5934, then minimum climb of 205'/NM to 16000.  
 Rwy 35R: Standard with minimum climb of 375'/NM to 5934.



(CONTINUED ON FOLLOWING PAGE)

NOTE: Chart not to scale.

COORZ SEVEN DEPARTURE (RNAV)  
 (COORZ, COORZ) 19MAR26  
 DENVER, COLORADO  
 DENVER INTL (DEN)

(COORZ, COORZ) 26078  
 COORZ SEVEN DEPARTURE (RNAV)  
 AL-9077 (FAA)  
 DENVER INTL (DEN)  
 DENVER, COLORADO



DEPARTURE ROUTE DESCRIPTION  
SEE ADDITIONAL REQUIREMENTS ON AAUP

TAKEOFF RUNWAY 8: Climb on heading 083° to 5934, then on heading 083° or as assigned by ATC, for vectors to cross IPALE at or above 13000, thence. . . .

TAKEOFF RUNWAYS 16L/R, 17L/R: Climb on heading 173° to 5934, then right turn direct to cross FOAMS at or below 10000, then on track 264° to cross JOROS at or above 11000, then on track 264° to cross IPALE at or above 13000, thence. . . .

TAKEOFF RUNWAY 25: Climb on heading 263° to 5934, then direct to cross FOAMS at or below 10000, then on track 264° to cross JOROS at or above 11000, then on track 264° to cross IPALE at or above 13000, thence. . . .

TAKEOFF RUNWAYS 34L/R, 35L/R: Climb on heading 353° to 5934, then left turn direct to cross FOAMS at or below 10000, then on track 264° to cross JOROS at or above 11000, then on track 264° to cross IPALE at or above 13000, thence. . . .

. . . .on track 264° to cross MOLSN at or above 14000 and at 250K, then on track 263° to cross BULLT at or above 16000, then on track 264° to cross COORZ at or above 17000 and at 280K. Then on transition. Maintain FL230. Expect higher filed altitude 10 minutes after departure.

VOAXA TRANSITION (COORZ7.VOAXA)

SW-1, 11 JUN 2026 to 09 JUL 2026

SW-1, 11 JUN 2026 to 09 JUL 2026