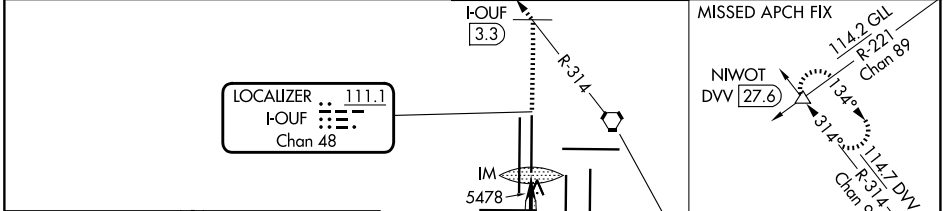


LOC/DME I-OUF <b>111.1</b> Chan <b>48</b>	APP CRS <b>353°</b>	Rwy Ldg TDZE <b>5354</b> Apt Elev <b>5434</b>	<b>12000</b>
---	------------------------	---	--------------

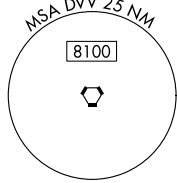
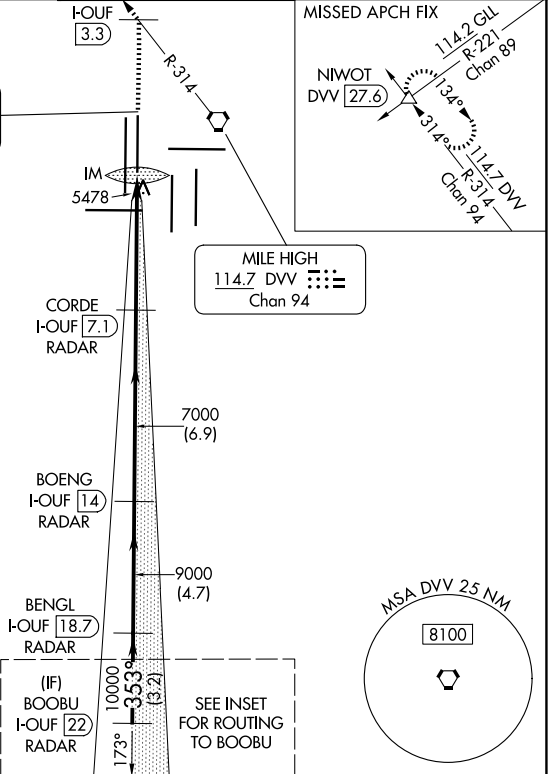
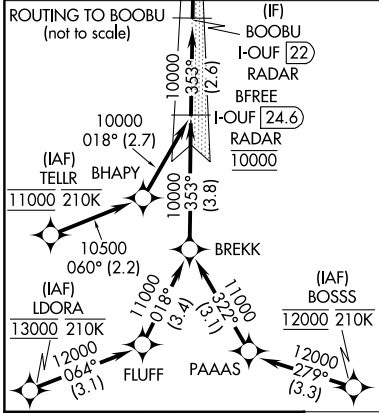
# ILS RWY 34R (SA CAT I)

DENVER INTL (DEN)

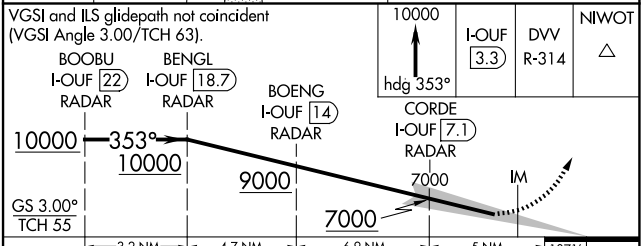
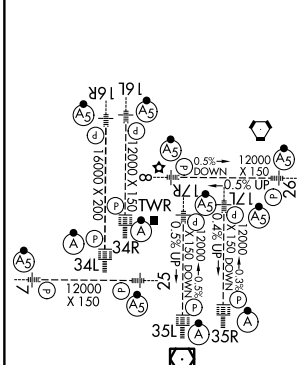
RNP APCH - GPS. From LDORA, BOSSS, TELLR. DME or RADAR required.		ALSF-2 	MISSED APPROACH: Climb to 10000 on heading 353° to I-OUF 3.3 DME north of I-OUF and on DVV VORTAC R-314 to NIWOT INT/DVV 27.6 DME and hold.
Simultaneous approach authorized. Requires specific OPSPEC, MSPEC, or LOA approval.	DENVER TOWER <b>135.3 351.95</b>	GND CON <b>121.35 379.175 (W)</b> <b>121.85 377.1 (E)</b>	
D-ATIS <b>125.6 379.9</b>	DENVER APP CON <b>119.3 307.3 (N)</b> <b>120.35 379.3 (S)</b>		



**LOCALIZER** 111.1  
I-OUF   
Chan 48



ELEV 5434 **D** TDZE 5354



GS 3.00° TCH 55	BOOBU I-OUF 22 RADAR	BENG I-OUF 18.7 RADAR	BOENG I-OUF 14 RADAR	CORDE I-OUF 7.1 RADAR	IM
3.2 NM	4.7 NM	6.9 NM	5 NM	1071'	
CATEGORY	A	B	C	D	
S-ILS 34R	RA 179/14 150 DA 5504				
<b>SA CATEGORY I ILS - SPECIAL AIRCREW &amp; AIRCRAFT CERTIFICATION REQUIRED</b>					

HIRL all Rwys  
TDZL/RCLS Rwws 7, 16L, 16R, 17R, 26,  
34L, 34R, 35L, 35R

SW-1, 11 JUN 2026 to 09 JUL 2026

SW-1, 11 JUN 2026 to 09 JUL 2026