

LOC/DME I-AQD 108.5 Chan 22	APP CRS 353°	Rwy Ldg TDZE Apt Elev 12000 5434 5434
---	------------------------	---

ILS RWY 35L (SA CAT I)

DENVER INTL (DEN)

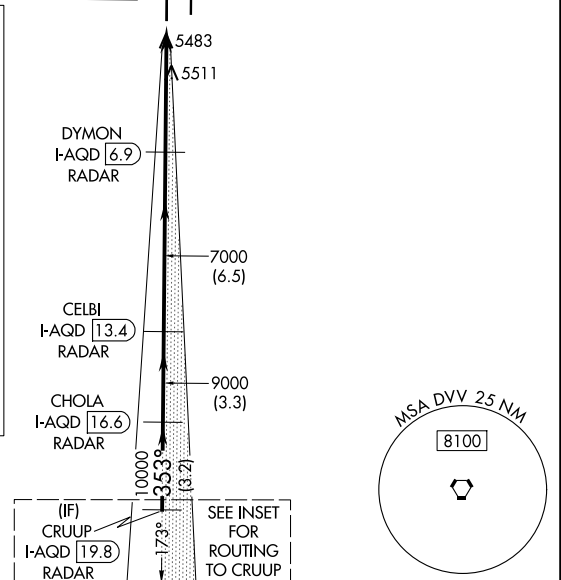
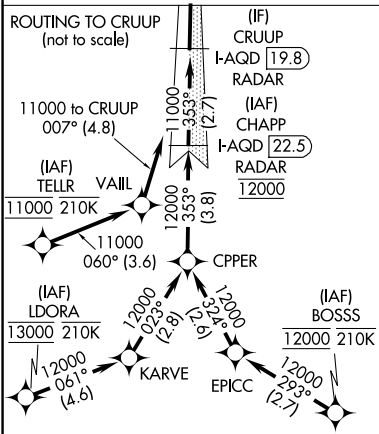
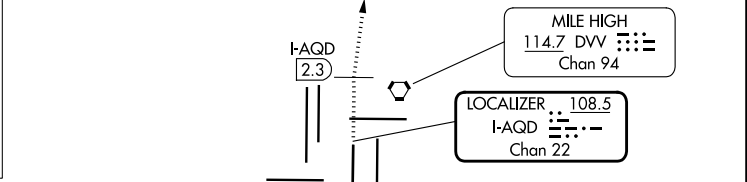
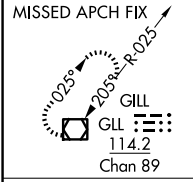
RNP APCH - GPS. From BOSSS, LDORA or TELLR.
DME or RADAR required.

Simultaneous approach authorized.
Requires specific OPSPEC, MSPEC or LOA approval.

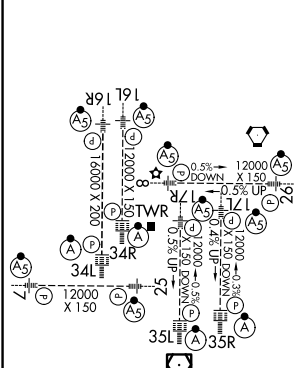
ALSF-2

MISSED APPROACH: Climb to 10000 on heading 353° to I-AQD 2.3 DME north of I-AQD and direct GLL VOR/DME and hold.

D-ATIS 125.6 379.9	DENVER APP CON 119.3 307.3 (N) 120.35 379.3 (S)	DENVER TOWER 124.3 322.45	GND CON 121.35 379.175 (W) 121.85 377.1 (E)
------------------------------	---	-------------------------------------	---



ELEV 5434 **D** TDZE 5434



CRUUP I-AQD 19.8 RADAR	CHOLA I-AQD 16.6 RADAR	CELBI I-AQD 13.4 RADAR	DYMON I-AQD 6.9 RADAR	10000 I-AQD 2.3 GLL
<p>VGSI and ILS glidepath not coincident (VGSI Angle 3.00/TCH 71).</p> <p>GS 3.00° TCH 53</p>				<p>↑ hdg 353°</p>
11000	10000	9000	7000	
<p>3.2 NM 3.3 NM 6.5 NM 4.8 NM 1.101 NM</p>				
CATEGORY	A	B	C	D
S-ILS 35L	RA 165/14 150 DA 5584			

HIRL all Rwys
TDZL/RCLS Rwys 7, 16L, 16R, 17R, 26, 34L, 34R, 35L, 35R

SA CATEGORY I ILS - SPECIAL AIRCREW & AIRCRAFT CERTIFICATION REQUIRED

SW-1, 11 JUN 2026 to 09 JUL 2026

SW-1, 11 JUN 2026 to 09 JUL 2026