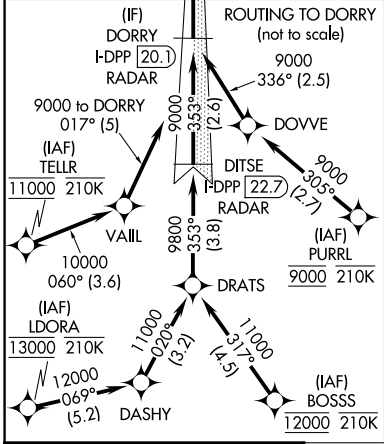
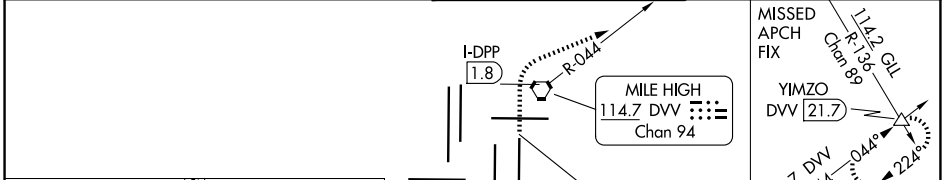


LOC/DME I-DPP <b>110.15</b> Chan <b>38(Y)</b>	APP CRS <b>353°</b>	Rwy Ldg <b>12000</b> TDZE <b>5370</b> Apt Elev <b>5434</b>
---	------------------------	--

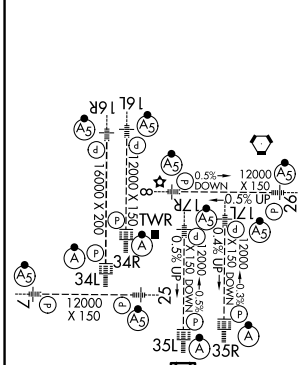
# ILS RWY 35R (SA CAT I)

DENVER INTL (DEN)

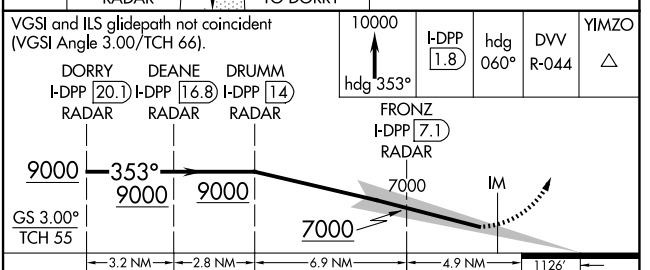
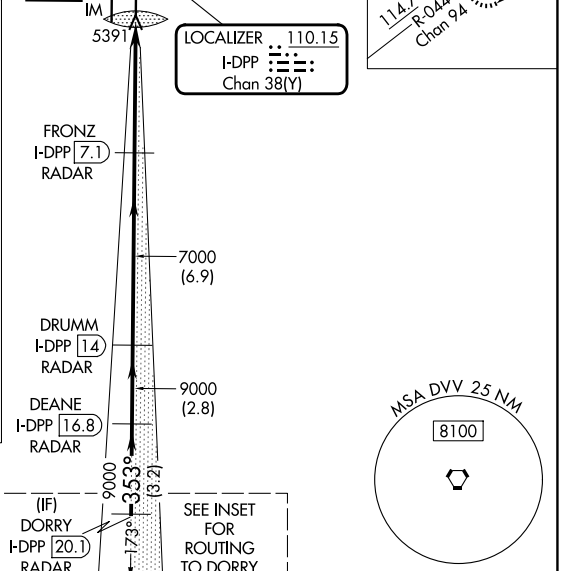
RNP APCH - GPS. From BOSSS, LDORA, PURRL or TELLR.		ALSF-2 	MISSED APPROACH: Climb to 10000 on heading 353° to 1.8 DME north of I-DPP and continue climb on heading 060° to DVV VORTAC R-044 to YIMZO INT/DVV 21.7 DME and hold.
DME or RADAR required.			
Requires specific OPSPEC, MSPEC, or LOA approval. Simultaneous approach authorized.			
D-ATIS <b>125.6 379.9</b>	DENVER APP CON <b>119.3 307.3 (N)</b> <b>120.35 379.3 (S)</b>	DENVER TOWER <b>132.35 239.275</b>	GND CON <b>121.35 379.175 (W)</b> <b>121.85 377.1 (E)</b>



ELEV 5434	<b>D</b>	TDZE 5370
-----------	----------	-----------



HIRL all Rwys  
TDZL/RCLS Rwys 7, 16L, 16R, 17R, 26, 34L, 34R, 35L, 35R



CATEGORY	A	B	C	D
S-ILS 35R	RA 161/14 150 DA 5520			
<b>SA CATEGORY I ILS - SPECIAL AIRCREW &amp; AIRCRAFT CERTIFICATION REQUIRED</b>				

SW-1, 11 JUN 2026 to 09 JUL 2026

SW-1, 11 JUN 2026 to 09 JUL 2026