

LOC/DME I-ACX 108.5 Chan 22	APP CRS 173°	Rwy Ldg TDZE Apt Elev	12000 5392 5434
-------------------------------------------------	------------------------	-----------------------------	--------------------------------------------

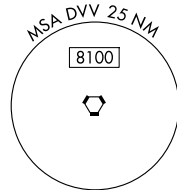
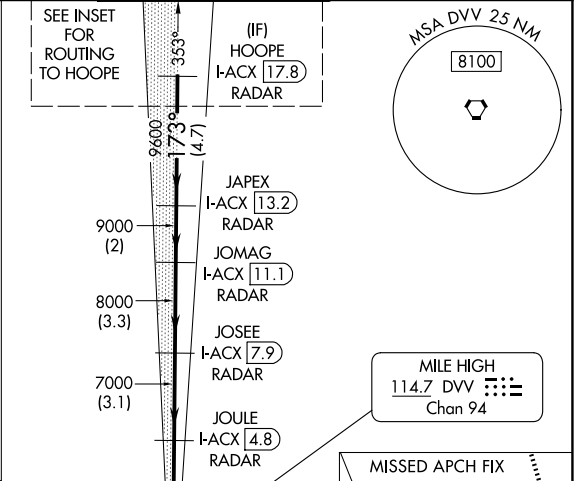
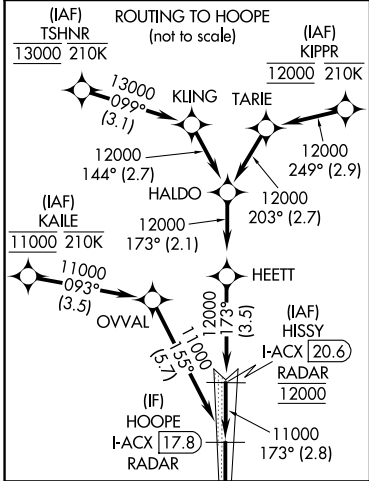
ILS or LOC RWY 17R

DENVER INTL (DEN)

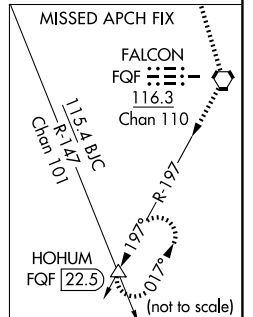
RNP APCH - GPS. From KAILE, KIPPR or TSHNR.
DME or RADAR required.
Simultaneous approach authorized.

MALSR
MISSED APPROACH: Climb to 11000 on heading 173° to I-ACX 4.2 DME south of I-ACX before turning direct FQG VORTAC and on FQG R-197 to HOHUM INT/FQG 22.5 DME and hold.

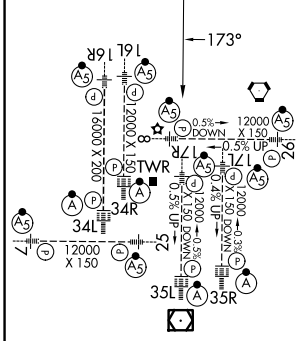
D-ATIS 125.6 379.9	DENVER APP CON 119.3 307.3 (N) 120.35 379.3 (S)	DENVER TOWER 124.3 322.45	GND CON 121.35 379.175 (W) 121.85 377.1 (E)
------------------------------	---------------------------------------------------------------------	-------------------------------------	-----------------------------------------------------------------



MILE HIGH
114.7 DVV
Chan 94

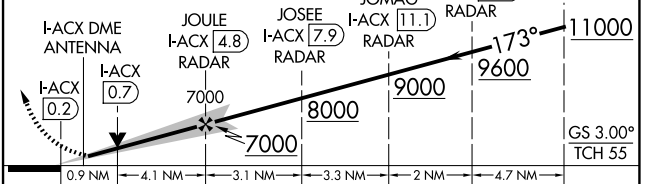


ELEV 5434 TDZE 5392



LOCALIZER
I-ACX 108.5
Chan 22

11000	I-ACX [4.2]	FQG	FQG R-197	HOHUM	VGSI and ILS glidepath not coincident (VGSI Angle 3.00/TCH 69)	HOHOPE I-ACX [17.8] RADAR
hdg 173°						JAPEX I-ACX [13.2] RADAR



CATEGORY	A	B	C	D
S-ILS 17R	5592/18 200 (200-1/2)			
S-LOC 17R	5720/24 328 (300-1/2)	5720/26 328 (300-1/2)		

SW-1, 11 JUN 2026 to 09 JUL 2026

SW-1, 11 JUN 2026 to 09 JUL 2026