

LOC/DME I-DXU 111.9 Chan 56	APP CRS 353°	Rwy Ldg TDZE Apt Elev	16000 5327 5434
---	------------------------	-----------------------------	--

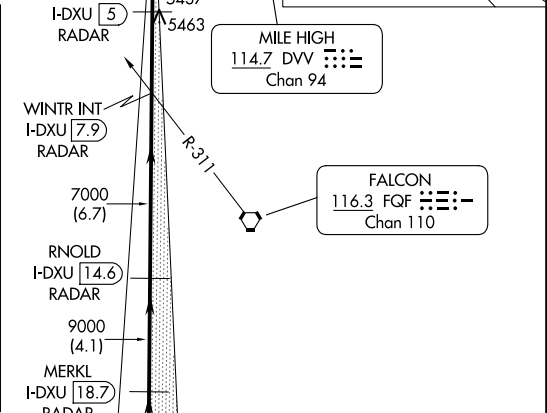
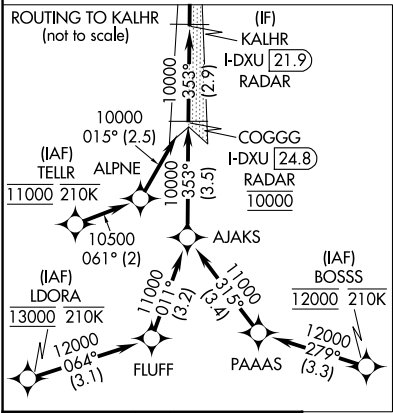
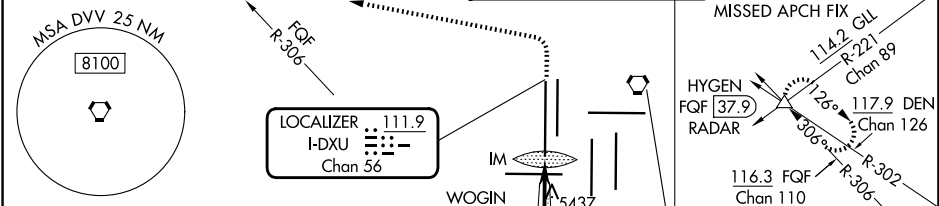
ILS or LOC RWY 34L

DENVER INTL (DEN)

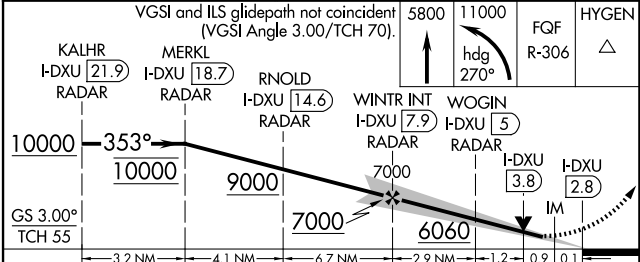
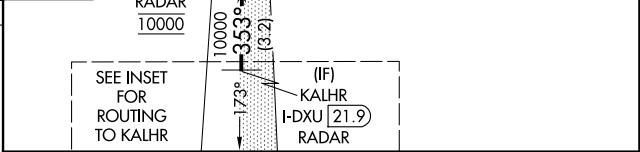
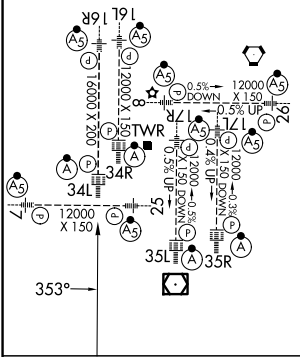
RNP APCH - GPS. From LDORA, BOSS, TELLR.
DME or RADAR required.
Simultaneous approach authorized. For inop ALS, increase S-LOC Cat C and D visibility to RVR 5500.

ALSF-2
MISSED APPROACH: Climb to 5800 then climbing left turn to 11000 on heading 270° and on FGF VORTAC R-306 to HYGEN/FQF 37.9 DME/RADAR and hold.

D-ATIS 125.6 379.9	DENVER APP CON 119.3 307.3 (N) 120.35 379.3 (S)	DENVER TOWER 135.3 351.95	GND CON 121.35 379.175 (W) 121.85 377.1 (E)
------------------------------	---	-------------------------------------	---



ELEV 5434	D	TDZE 5327
TDZL/RCLS rwy's 7, 16L, 16R, 17R, 26, 34L, 34R, 35L, 35R		
HIRL all rwy's		



CATEGORY	A	B	C	D
S-ILS 34L	5527/18 200 (100-½)			
S-LOC 34L	5700/24 373 (300-½)		5700/35 373 (300-¾)	

FAF to MAP 5.1 NM					
Knots	60	90	120	150	180
Min:Sec	5:06	3:24	2:33	2:02	1:42

SW-1, 11 JUN 2026 to 09 JUL 2026

SW-1, 11 JUN 2026 to 09 JUL 2026