

ILS or LOC RWY 34R

DENVER INTL (DEN)

LOC/DME I-OUF 111.1 Chan 48	APP CRS 353°	Rwy Ldg 12000 TDZE 5354 Apt Elev 5434
---	------------------------	--

RNP APCH - GPS. From LDORA, BOSSS, TELLR.
DME or RADAR required.

Simultaneous approach authorized. For inop ALS, increase S-LOC Cat C and D visibility to RVR 5500.

ALS F-2
MISSED APPROACH: Climb to 10000 on heading 353° to I-OUF 3.3 DME north of I-OUF and on DVV VORTAC R-314 to NIWOT INT/DVV 27.6 DME and hold.

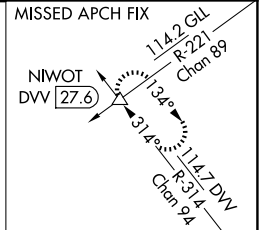
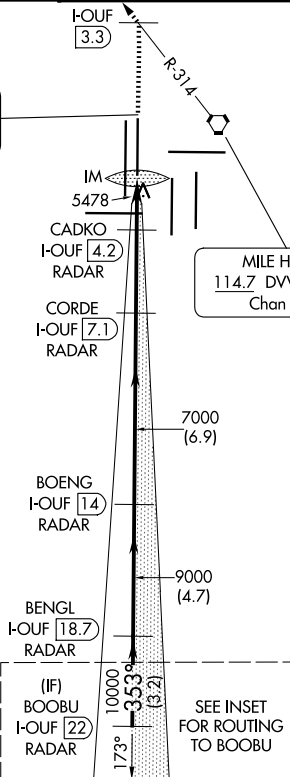
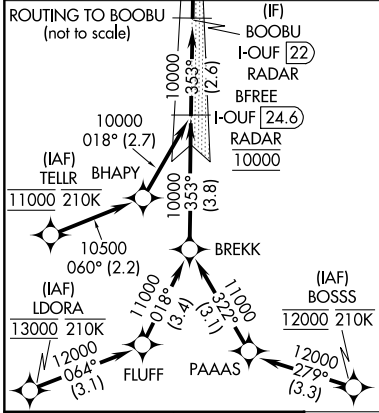
D-ATIS
125.6 379.9

DENVER APP CON
119.3 307.3 (N)
120.35 379.3 (S)

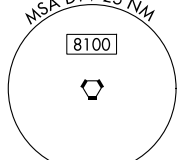
DENVER TOWER
135.3 351.95

GND CON
121.35 379.175 (W)
121.85 377.1 (E)

LOCALIZER **111.1**
I-OUF
Chan **48**

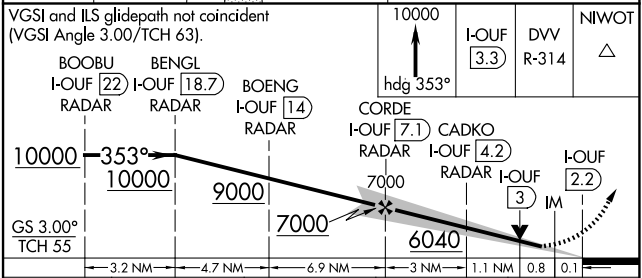
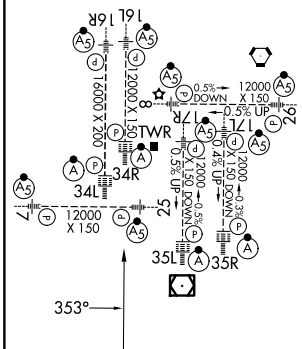


MILE HIGH
114.7 DVV
Chan **94**



ELEV 5434 **D** TDZE 5354

TDZL/RCLS Rwws 7, 16L, 16R, 17R, 26, 34L, 34R, 35L, 35R
HIRL all Rwws



FAF to MAP 5 NM

Knots	60	90	120	150	180
Min:Sec	5:00	3:20	2:30	2:00	1:40

CATEGORY	A	B	C	D
S-ILS 34R	5554/18 200 (200-½)			
S-LOC 34R	5720/24 366 (300-½)		5720/30 366 (300-¾)	

SW-1, 11 JUN 2026 to 09 JUL 2026

SW-1, 11 JUN 2026 to 09 JUL 2026