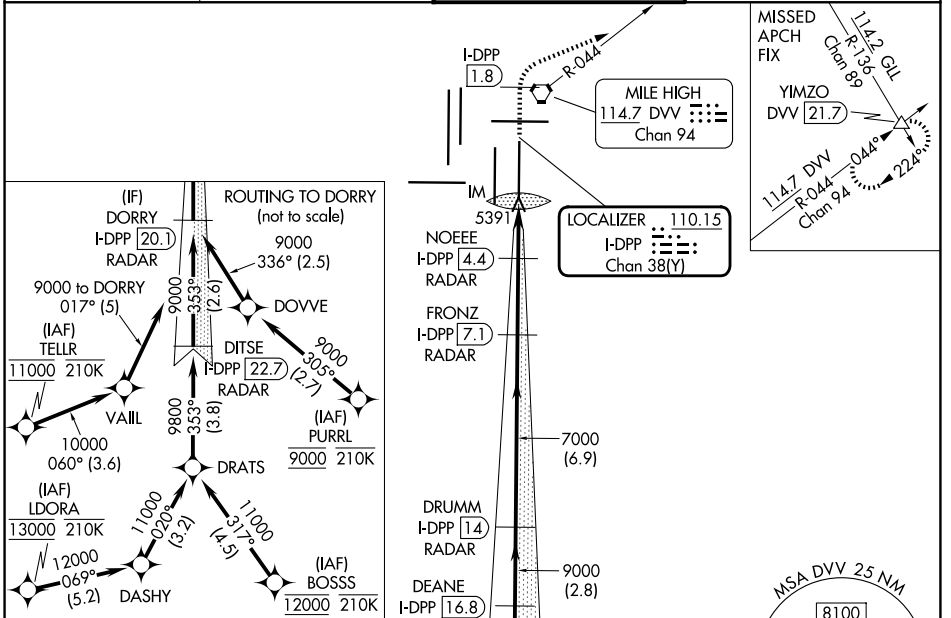


LOC/DME I-DPP 110.15 Chan 38(Y)	APP CRS 353°	Rwy Ldg 12000 TDZE 5370 Apt Elev 5434
---	------------------------	--

ILS or LOC RWY 35R

DENVER INTL (DEN)

RNP APCH - GPS. From BOSSS, LDORA, PURRL or TELLR.		ALSF-2 	MISSED APPROACH: Climb to 10000 on heading 353° to 1.8 DME north of I-DPP and continue climb on heading 060° to DVV VORTAC R-044 to YIMZO INT/DVV 21.7 DME and hold.
DME or RADAR required.			
Simultaneous approach authorized. For inop ALS, increase S-LOC 35R Cat C/D visibility to RVR 5500.			
D-ATIS 125.6 379.9	DENVER APP CON 119.3 307.3 (N) 120.35 379.3 (S)	DENVER TOWER 132.35 239.275	GND CON 121.35 379.175 (W) 121.85 377.1 (E)

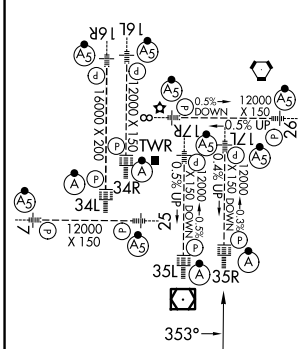


SW-1, 11 JUN 2026 to 09 JUL 2026

SW-1, 11 JUN 2026 to 09 JUL 2026

ELEV 5434	D	TDZE 5370
-----------	----------	-----------

HIRL all Rwys
TDZL/RCLS Rwys 7, 16L, 16R, 17R, 26, 34L, 34R, 35L, 35R



VGSi and ILS glidepath not coincident (VGSi Angle 3.00/TCH 66).		10000	I-DPP 1.8	hdg 060°	DVV R-044	YIMZO Δ		
DORRY I-DPP 20.1 RADAR	DEANE I-DPP 16.8 RADAR	DRUMM I-DPP 14 RADAR	FRONZ I-DPP 7.1 RADAR	NOEEE I-DPP 4.4 RADAR	I-DPP 3.1	I-DPP 2.2		
9000	353°	9000	7000	6120	IM			
GS 3.00° TCH 55		3.2 NM	2.8 NM	6.9 NM	2.7 NM	1.3 NM	0.8	0.1
CATEGORY	A	B	C	D				
S-ILS 35R	5570/18 200 (200-1/2)							
S-LOC 35R	5740/24	370 (400-1/2)	5740/35	370 (400-5/8)				