

LOC/DME I-FUI <b>108.9</b> Chan 26	APP CRS <b>083°</b>	Rwy Ldg TDZE Apt Elev	<b>12000</b> <b>5354</b> <b>5434</b>
------------------------------------------	------------------------	-----------------------------	--------------------------------------------

# ILS or LOC RWY 8

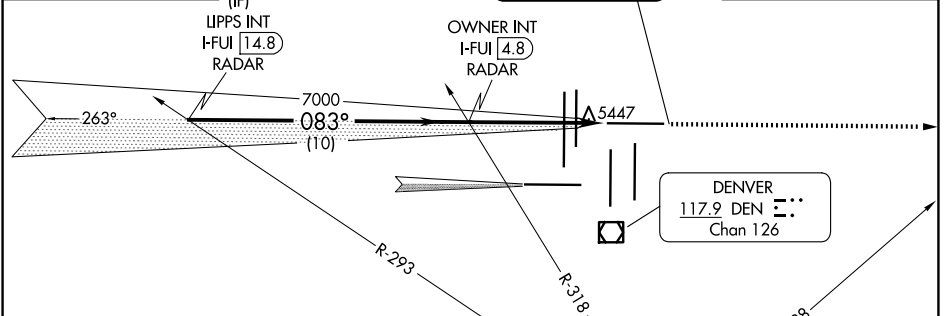
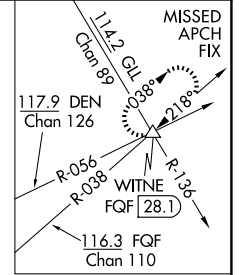
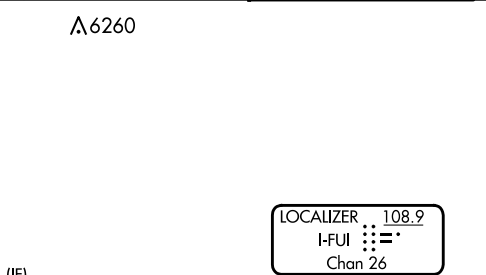
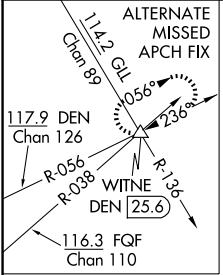
DENVER INTL (DEN)

**Simultaneous approach authorized with Rwy 7. For inoperative MALSR, increase S-LOC 8 Cat C/D visibility to RVR 5500. \*\* RVR 1800 authorized with use of FD or AP or HUD to DA.**



**MISSED APPROACH:** Climb to 10000 on heading 083° and on FGF VORTAC R-038 to WITNE INT/FGF 28.1 DME and hold.

D-ATIS <b>125.6 379.9</b>	DENVER APP CON <b>119.3 307.3 (N)</b> <b>120.35 379.3 (S)</b>	DENVER TOWER <b>132.35 239.275</b>	GND CON <b>121.35 379.175 (W)</b> <b>121.85 377.1 (E)</b>
------------------------------	---------------------------------------------------------------------	---------------------------------------	-----------------------------------------------------------------

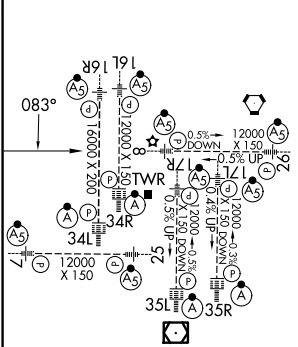


SW-1, 11 JUN 2026 to 09 JUL 2026

SW-1, 11 JUN 2026 to 09 JUL 2026

## RADAR REQUIRED

ELEV 5434	<b>D</b>	TDZE 5354
-----------	----------	-----------



HIRL all Rwys  
TDZL/RCLS Rwy 7, 16L, 16R, 17R, 26, 34L, 34R, 35L, 35R

FAF to MAP 5 NM

Knots	60	90	120	150	180
Min:Sec	5:00	3:20	2:30	2:00	1:40

LIPPS INT I-FUI [14.8] RADAR	VGSi and ILS glidepath not coincident (VGSi Angle 3.00/TCH 70).		10000	FGF R-038	WITNE
	OWNER INT I-FUI [4.8] RADAR		hdg 083°		△
*LOC only					
GS 3.00° TCH 52	10000		7000		
CATEGORY		A	B	C	D
S-ILS 8**		5554/24		200 (200-½)	
S-LOC 8		5700/24 346 (300-½)		5700/30 346 (300-⅝)	