

RNAV (RNP) Z RWY 16L

DENVER INTL (DEN)

APP CRS	Rwy Ldg	12000
173°	TDZE	5357
	Apt Elev	5434

RNP AR APCH - GPS. Authorization required.

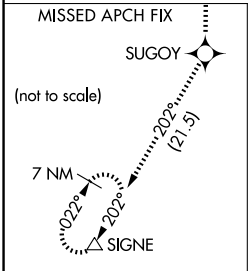
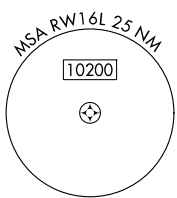
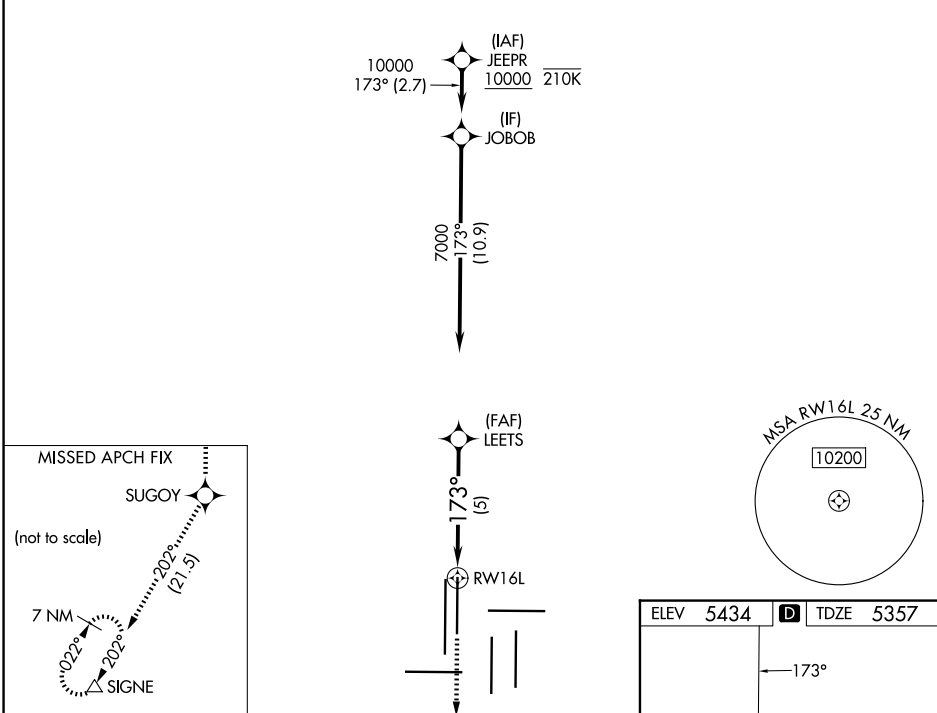
Simultaneous approach authorized. For uncompensated Baro-VNAV systems, procedure NA below -26°C or above 54°C. For inop ALS, increase RNP 0.10 all Cats visibility to RVR 4000 and RNP 0.30 all Cats visibility to RVR 5000.

MALSR

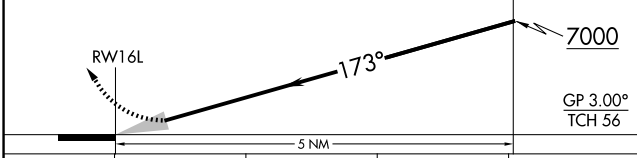


MISSED APPROACH: Climb to 10000 direct SUGOY and on track 202° to SIGNE and hold.

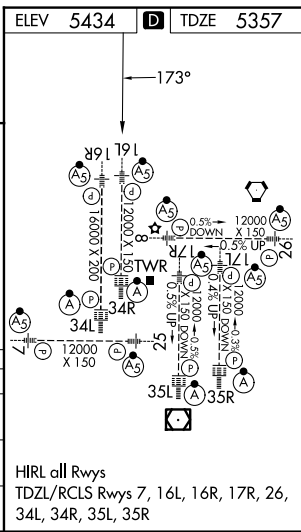
D-ATIS 125.6 379.9	DENVER APP CON 119.3 307.3 (N) 120.35 379.3 (S)	DENVER TOWER 135.3 351.95	GND CON 121.35 379.175 (W) 121.85 377.1 (E)
------------------------------	---	-------------------------------------	---



10000	SUGOY	tr 202°	SIGNE	VGSI and RNAV glidepath not coincident (VGSI Angle 3.00/TCH 71).
				LEETS



CATEGORY	A	B	C	D
RNP 0.10 DA	5617/24		260 (200-½)	
RNP 0.30 DA	5683/26		326 (300-½)	



AUTHORIZATION REQUIRED

HIRL all Rwys
TDZL/RCLS Rwys 7, 16L, 16R, 17R, 26, 34L, 34R, 35L, 35R

SW-1, 11 JUN 2026 to 09 JUL 2026

SW-1, 11 JUN 2026 to 09 JUL 2026