

APP CRS	Rwy Ldg	<b>12000</b>
<b>173°</b>	TDZE	<b>5392</b>
	Apt Elev	<b>5434</b>

# RNAV (RNP) Z RWY 17R

DENVER INTL (DEN)

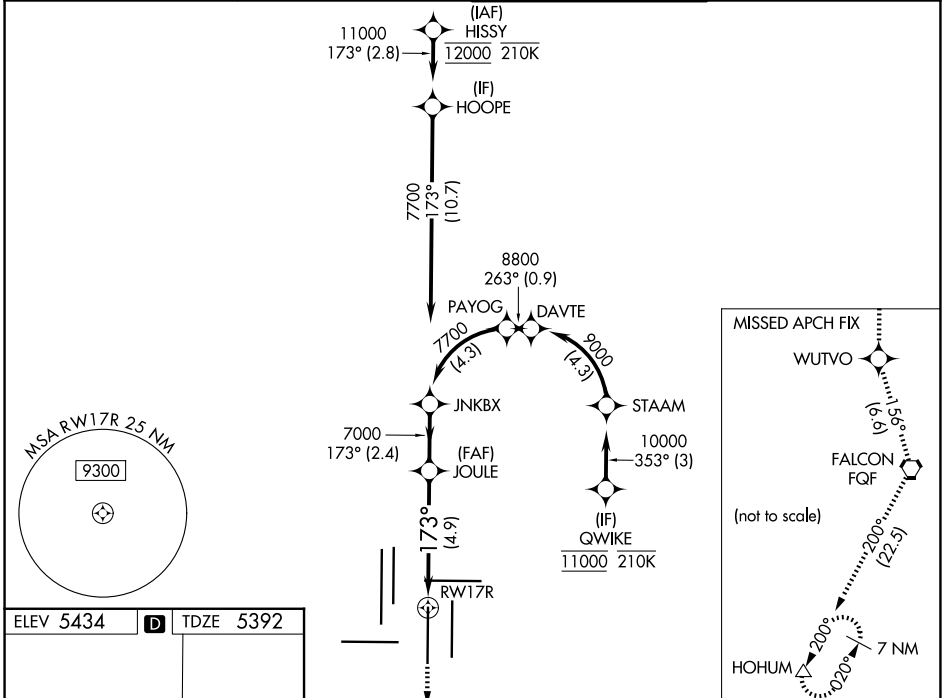
RNP AR APCH - GPS. Authorization required. From STAAM or PAYOG: RF.

Simultaneous approach authorized. For uncompensated Baro-VNAV systems, procedure NA below -26°C or above 54°C. For inop ALS, increase RNP 0.30 all Cats visibility to 1 $\frac{1}{2}$  SM.

MALSR

MISSED APPROACH: Climb to 11000 direct WUTVO and track 156° to FGF VORTAC and track 200° to HOHUM and hold.

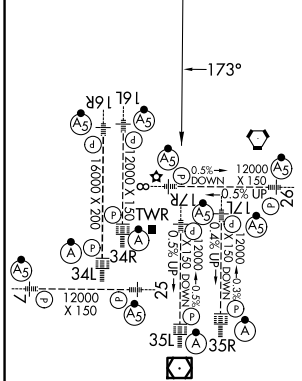
D-ATIS <b>125.6 379.9</b>	DENVER APP CON <b>119.3 307.3 (N)</b> <b>120.35 379.3 (S)</b>	DENVER TOWER <b>124.3 322.45</b>	GND CON <b>121.35 379.175 (W)</b> <b>121.85 377.1 (E)</b>
------------------------------	---	-------------------------------------	---



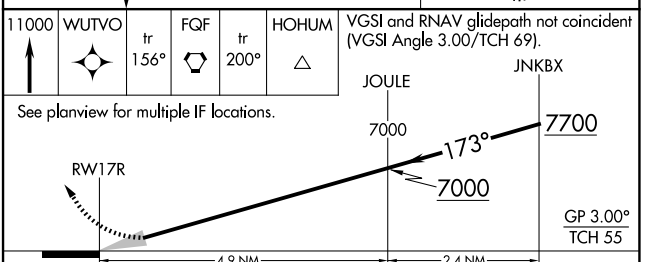
SW-1, 11 JUN 2026 to 09 JUL 2026

SW-1, 11 JUN 2026 to 09 JUL 2026

ELEV 5434	<b>D</b>	TDZE 5392
-----------	----------	-----------



HIRL all Rwys  
TDZL/RCLS Rwys 7, 16L, 16R, 17R, 26, 34L, 34R, 35L, 35R



11000	WUTVO	tr 156°	FGF	tr 200°	HOHUM	VGSI and RNAV glidepath not coincident (VGSI Angle 3.00/TCH 69).	
						JOULE	JNKBX
						7000	7700
							GP 3.00° TCH 55
						4.9 NM	2.4 NM
CATEGORY	A	B	C	D			
RNP 0.10 DA		5722/26	330 (300-1/2)				
RNP 0.30 DA		5894/55	502 (500-1)				

## AUTHORIZATION REQUIRED