

# RNAV (RNP) Z RWY 34L

DENVER INTL (DEN)

APP CRS <b>353°</b>	Rwy Ldg <b>16000</b>
	TDZE <b>5327</b>
	Apt Elev <b>5434</b>

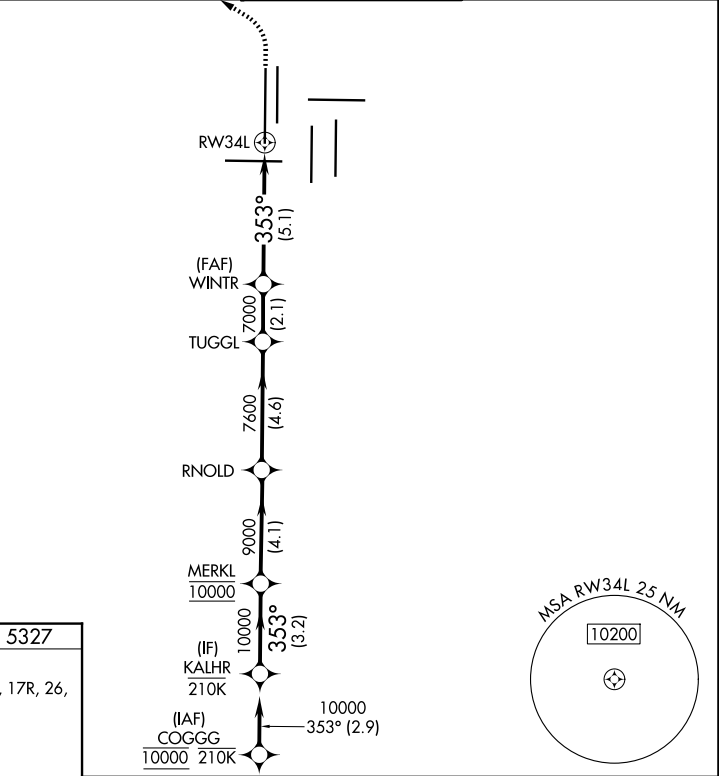
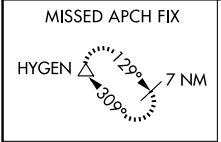
RNP AR APCH - GPS. Authorization required.

▼ Simultaneous approach authorized. For uncompensated Baro-VNAV systems, procedure NA below -26°C or above 54°C. For inop ALS, increase RNP 0.10 all Cats visibility to RVR 4000.

ALSF-2

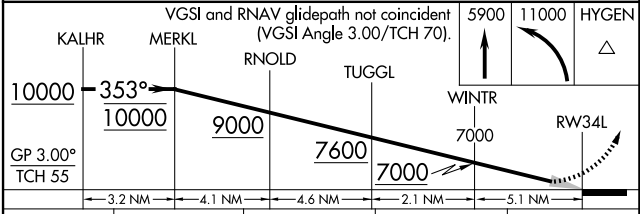
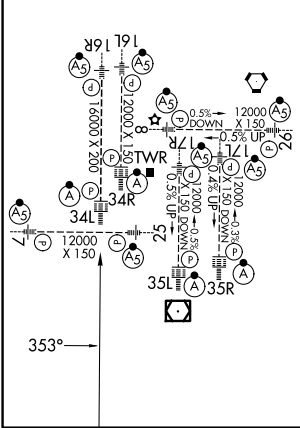
MISSED APPROACH: Climb to 5900 then climbing left turn to 11000 direct HYGEN and hold.

D-ATIS <b>125.6 379.9</b>	DENVER APP CON <b>119.3 307.3 (N)</b> <b>120.35 379.3 (S)</b>	DENVER TOWER <b>135.3 351.95</b>	GND CON <b>121.35 379.175 (W)</b> <b>121.85 377.1 (E)</b>
------------------------------	---	-------------------------------------	---



ELEV 5434	<b>D</b>	TDZE 5327
-----------	----------	-----------

HIRL all Rwys  
TDZL/RCLS Rwys 7, 16L, 16R, 17R, 26, 34L, 34R, 35L, 35R



CATEGORY	A	B	C	D
RNP 0.10 DA		5587/24	260 (200-½%)	
RNP 0.20 DA		5720/35	393 (300-¾%)	
RNP 0.30 DA		5782/45	455 (400-¾%)	

## AUTHORIZATION REQUIRED

SW-1, 11 JUN 2026 to 09 JUL 2026

SW-1, 11 JUN 2026 to 09 JUL 2026