

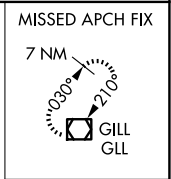
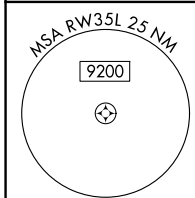
APP CRS 353°	Rwy Ldg TDZE Apt Elev	12000 5434 5434
------------------------	-----------------------------	--

RNAV (RNP) Z RWY 35L

DENVER INTL (DEN)

RNP AR APCH - GPS. Authorization required.	ALSF-2	MISSED APPROACH: Climb to 10000 direct MAXPU and track 360° to GLL VOR/DME and hold.
<p>▼ For uncompensated Baro-VNAV systems, procedure NA below -26°C or above 54°C. For inop ALS, increase RNP 0.10 all Cats visibility to RVR 4500. Simultaneous approach authorized.</p>		

D-ATIS 125.6 379.9	DENVER APP CON 119.3 307.3 (N) 120.35 379.3 (S)	DENVER TOWER 124.3 322.45	GND CON 121.35 379.175 (W) 121.85 377.1 (E)
------------------------------	---	-------------------------------------	---

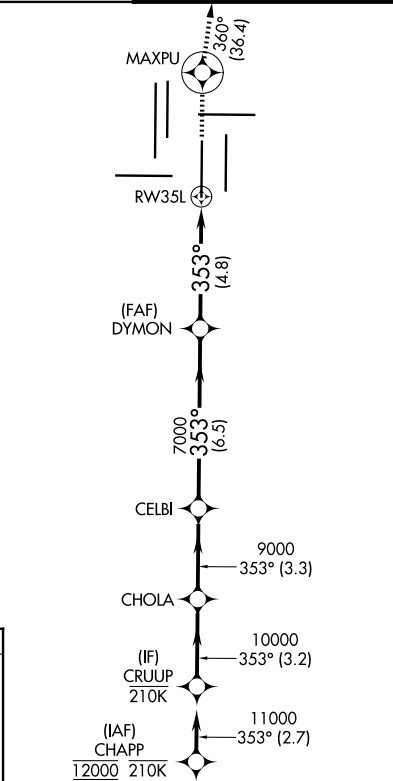
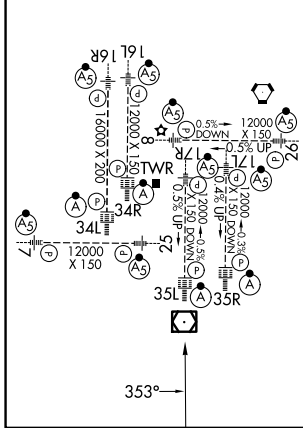


SW-1, 11 JUN 2026 to 09 JUL 2026

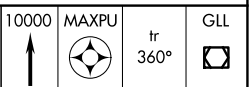
SW-1, 11 JUN 2026 to 09 JUL 2026

ELEV 5434	D	TDZE 5434
-----------	----------	-----------

HIRL all Rwys
TDZL/RCLS Rwys 7, 16L, 16R, 17R, 26, 34L, 34R, 35L, 35R



VGSI and RNAV glidepath not coincident (VGSI Angle 3.00/TCH 71).			
CRUUP	CHOLA	CELBI	DYMON
11000	10000	9000	7000
GP 3.00°			
TCH 53			
	3.2 NM	3.3 NM	6.5 NM
			4.8 NM



CRUUP	CHOLA	CELBI	DYMON	RW35L
11000	10000	9000	7000	
GP 3.00°				
TCH 53				
	3.2 NM	3.3 NM	6.5 NM	4.8 NM

CATEGORY	A	B	C	D
RNP 0.10 DA		5695/24	261 (300-1/2)	
RNP 0.30 DA		5760/26	326 (400-1/2)	

AUTHORIZATION REQUIRED