

RNAV (RNP) Z RWY 35R

DENVER INTL (DEN)

APP CRS 353°	Rwy Ldg TDZE Apt Elev	12000 5370 5434
------------------------	-----------------------------	--

RNP AR APCH - GPS. Authorization required. From MSIMS: RF.

▼ For uncompensated Baro-VNAV systems, procedure NA below -26°C or above 54°C. For inop ALS, increase RNP 0.10 all Cats visibility to RVR 4500. Simultaneous approach authorized.

ALSF-2

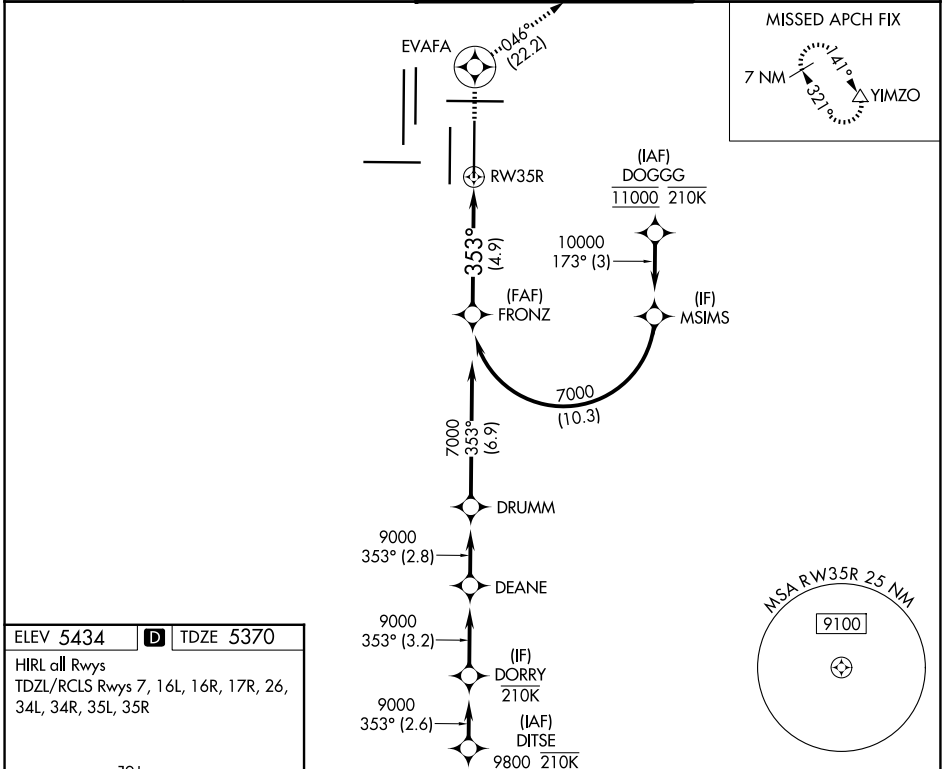
MISSED APPROACH: Climb to 10000 direct EVAFA and on track 046° to YIMZO and hold.

D-ATIS
125.6 379.9

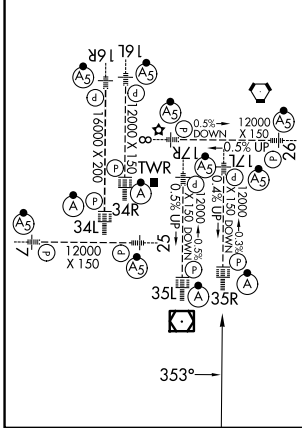
DENVER APP CON
119.3 307.3 (N)
120.35 379.3 (S)

DENVER TOWER
132.35 239.275

GND CON
121.35 379.175 (W)
121.85 377.1 (E)

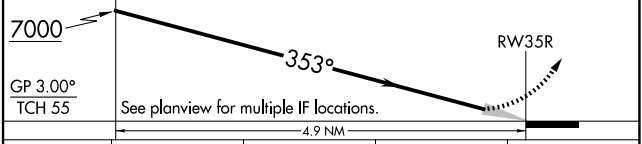


ELEV 5434	D	TDZE 5370
HIRL all Rwys		
TDZL/RCLS Rwys 7, 16L, 16R, 17R, 26, 34L, 34R, 35L, 35R		



VGSI and RNAV glidepath not coincident (VGSI Angle 3.00/TCH 66).

10000	EVAFA	tr 046°	YIMZO
-------	-------	---------	-------



CATEGORY	A	B	C	D
RNP 0.10 DA		5631/24	261 (200-1/2)	
RNP 0.30 DA		5702/26	332 (300-1/2)	

AUTHORIZATION REQUIRED

SW-1, 11 JUN 2026 to 09 JUL 2026

SW-1, 11 JUN 2026 to 09 JUL 2026