

APP CRS	Rwy Ldg	12000
082°	TDZE	5352
	Apt Elev	5434


RNAV (RNP) Z RWY 7

DENVER INTL (DEN)

RNP AR APCH.

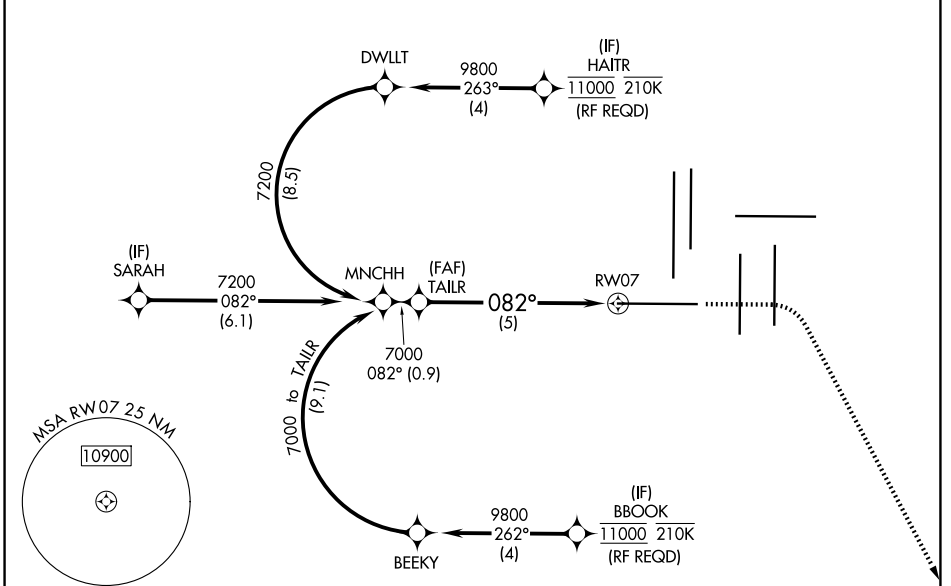
Simultaneous approach authorized. For uncompensated Baro-VNAV systems, procedure NA below -23°C or above 54°C. For inop ALS, increase RNP 0.15 all Cats visibility to RVR 4000, and increase RNP 0.30 all Cats visibility to RVR 6000.

MALSR



MISSED APPROACH: Climb to 5900 then climbing right turn to 10000 direct CIDMU and track 081° to LIMEX and hold.

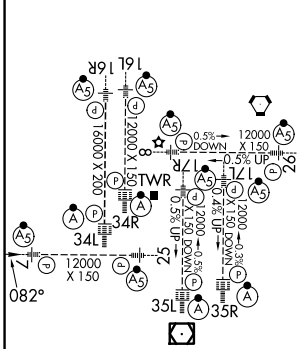
D-ATIS 125.6 379.9	DENVER APP CON 119.3 307.3 (N) 120.35 379.3 (S)	DENVER TOWER 128.75 273.55	GND CON 121.35 379.175 (W) 121.85 377.1 (E)
------------------------------	---	--------------------------------------	---



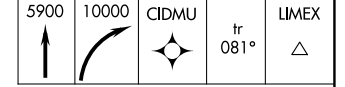
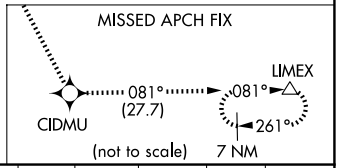
SW-1, 11 JUN 2026 to 09 JUL 2026

SW-1, 11 JUN 2026 to 09 JUL 2026

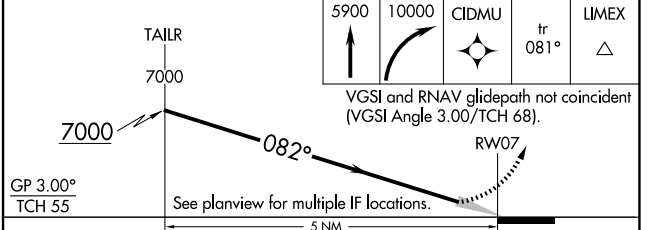
ELEV 5434	D	TDZE 5352
-----------	----------	-----------



HIRL all Rwys
TDZL/RCLS Rwys 7, 16L, 16R, 17R, 26, 34L, 34R, 35L, 35R



VGSi and RNAV glidepath not coincident (VGSi Angle 3.00/TCH 68).



GP 3.00° TCH 55	See planview for multiple IF locations.			
CATEGORY	A	B	C	D
RNP 0.15 DA	5602/24		250 (200-½)	
RNP 0.30 DA	5753/40		401 (400-¾)	

AUTHORIZATION REQUIRED