

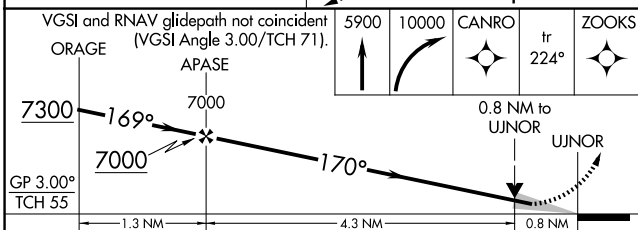
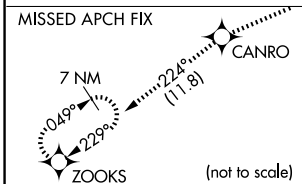
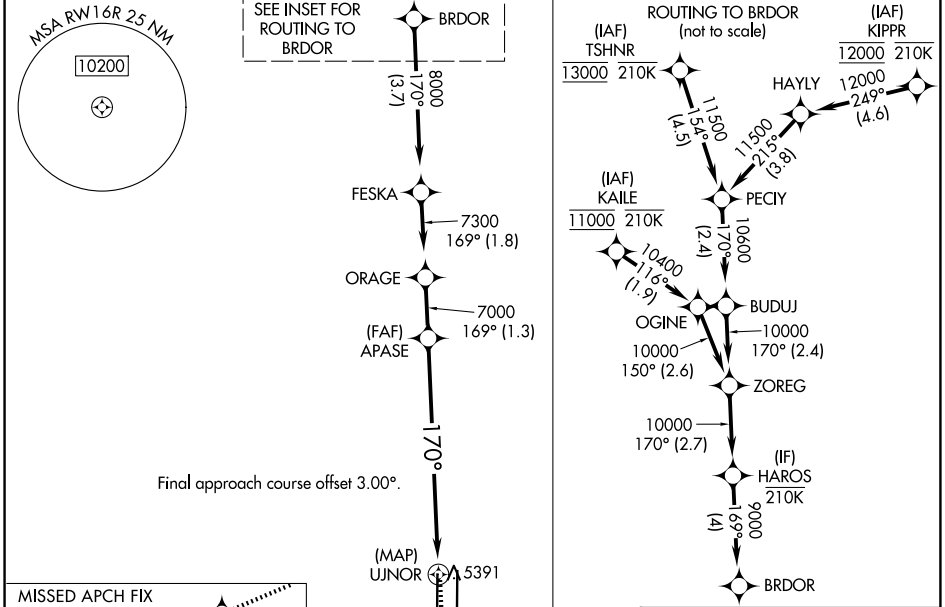
WAAS CH <b>53546</b> <b>W16B</b>	APP CRS <b>170°</b>	Rwy Ldg TDZE <b>5326</b> Apt Elev <b>5434</b>
--	------------------------	---

# RNAV (GPS) Y RWY 16R

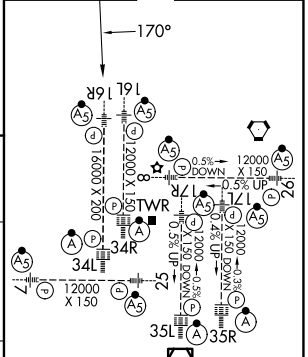
DENVER INTL (DEN)

RNP APCH - GPS.	MALSR 	MISSED APPROACH: Climb to 5900 then climbing right turn to 10000 direct CANRO and on track 224° to ZOOKS and hold.
<p>Simultaneous approach authorized. Use of FD or AP required during simultaneous operations. LNAV procedure NA during simultaneous operations. For uncompensated Baro-VNAV systems, LNAV/VNAV NA below -26°C or above 54°C. For inop ALS, increase LNAV/VNAV all Cts visibility to RVR 4000.</p>		

D-ATIS <b>125.6 379.9</b>	DENVER APP CON <b>119.3 307.3 (N)</b> <b>120.35 379.3 (S)</b>	DENVER TOWER <b>135.3 351.95</b>	GND CON <b>121.35 379.175 (W)</b> <b>121.85 377.1 (E)</b>
------------------------------	---	-------------------------------------	---



ELEV 5434	<b>D</b>	TDZE 5326
-----------	----------	-----------



CATEGORY	A	B	C	D
LPV DA		5576/24	250 (200-½)	
LNAV/VNAV DA		5582/24	256 (200-½)	
LNAV MDA	5660/24	334 (300-½)	5660/26	334 (300-½)

HIRL all Rwys  
TDZL/RCLS Rwy 7, 16L, 16R, 17R, 26, 34L, 34R, 35L, 35R

SW-1, 11 JUN 2026 to 09 JUL 2026

SW-1, 11 JUN 2026 to 09 JUL 2026