

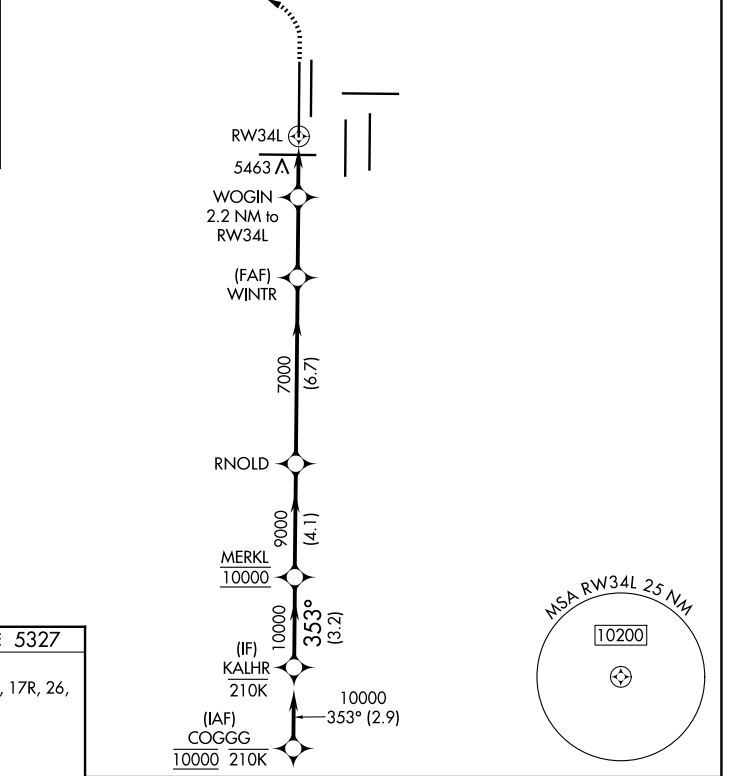
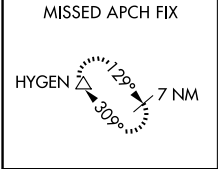
WAAS CH <b>45619</b> <b>W34A</b>	APP CRS <b>353°</b>	Rwy Ldg <b>16000</b> TDZE <b>5327</b> Apt Elev <b>5434</b>
--	------------------------	--

# RNAV (GPS) Y RWY 34L

DENVER INTL (DEN)

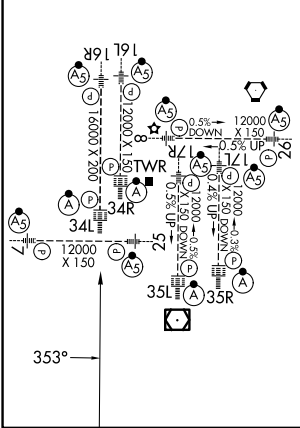
RNP APCH - GPS.	ALSF-2	MISSED APPROACH: Climb to 5900 then climbing left turn to 11000 direct HYGEN and hold.
<p>▼ For uncompensated Baro-VNAV systems, LNAV/VNAV NA below -22°C or above 54°C. LNAV procedure NA during simultaneous operations. Use of FD or AP required during simultaneous operations. Simultaneous approach authorized.</p>		

D-ATIS <b>125.6 379.9</b>	DENVER APP CON <b>119.3 307.3 (N)</b> <b>120.35 379.3 (S)</b>	DENVER TOWER <b>135.3 351.95</b>	GND CON <b>121.35 379.175 (W)</b> <b>121.85 377.1 (E)</b>
------------------------------	---	-------------------------------------	---



ELEV 5434	<b>D</b>	TDZE 5327
-----------	----------	-----------

HIRL all Rwys  
TDZL/RCLS Rwys 7, 16L, 16R, 17R, 26, 34L, 34R, 35L, 35R



KALHR		VGSi and RNAV glidepath not coincident (VGSi Angle 3.00/TCH 70).		5900	11000	HYGEN
MERKL		RNOLD				
10000	353°	9000	7000	6060	RWY 34L	
GP 3.00°		TCH 55		<p>WOGIN 2.2 NM to RWY 34L 1 NM to RWY 34L</p>		
3.2 NM		4.1 NM		6.7 NM		2.9 NM
1.2 NM		1 NM				
CATEGORY	A	B		C		D
LPV DA	5527/18		200 (100-½)			
LNAV/VNAV DA	5664/35		337 (300-⅙)			
LNAV MDA	5720/24		393 (300-½)		5720/35 393 (300-⅙)	

SW-1, 11 JUN 2026 to 09 JUL 2026

SW-1, 11 JUN 2026 to 09 JUL 2026