

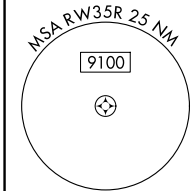
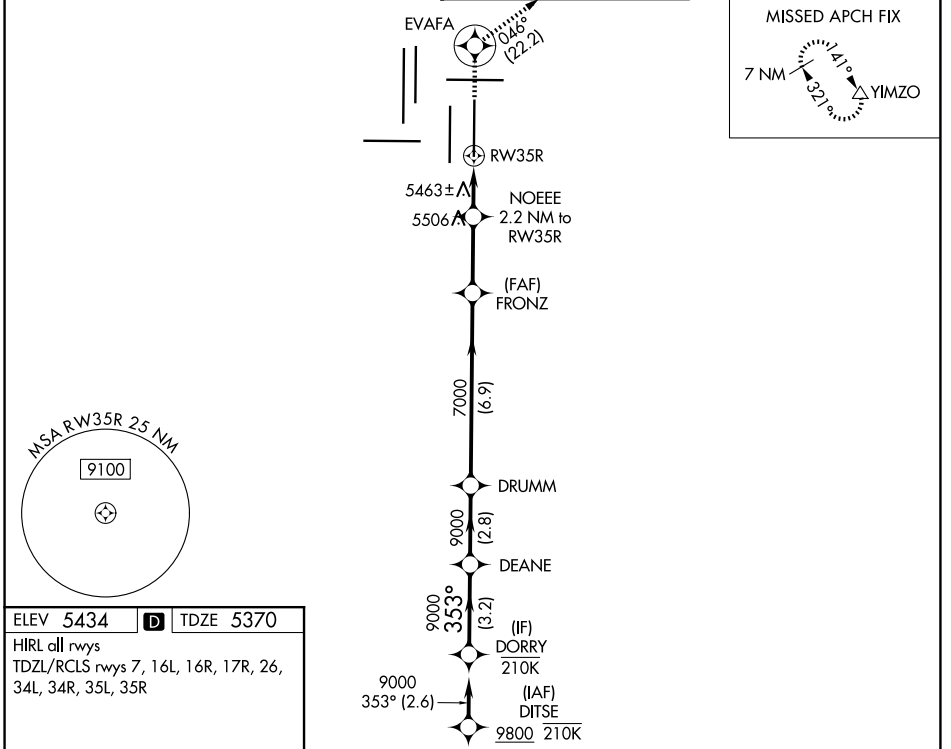
WAAS CH 45719 W35B	APP CRS 353°	Rwy Ldg 12000 TDZE 5370 Apt Elev 5434
--	------------------------	---

RNAV (GPS) Y RWY 35R

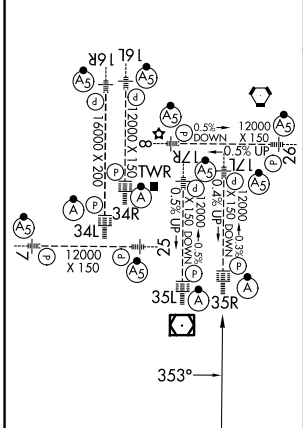
DENVER INTL (DEN)

RNP APCH - GPS. ▼ For uncompensated Baro-VNAV systems, LNAV/VNAV NA below -26°C or above 54°C. For inop ALS, increase LNAV/VNAV all Cats visibility to RVR 4000. LNAV procedure NA during simultaneous operations. Simultaneous approach authorized. Use of FD or AP required during simultaneous operations.	ALSf-2 	MISSED APPROACH: Climb to 10000 direct EVAFA and on track 046° to YIMZO and hold.
--	------------	---

D-ATIS 125.6 379.9	DENVER APP CON 119.3 307.3 (N) 120.35 379.3 (S)	DENVER TOWER 132.35 239.275	GND CON 121.35 379.175 (W) 121.85 377.1 (E)
------------------------------	---	---------------------------------------	---



ELEV 5434	D	TDZE 5370
HIRL all rwys		
TDZL/RCLS rwys 7, 16L, 16R, 17R, 26, 34L, 34R, 35L, 35R		



VGSI and RNAV glidepath not coincident (VGSI Angle 3.00/TCH 66).				10000	EVAFA	tr 046°	YIMZO
DORRY	DEANE	DRUMM	FRONZ	NOEEE			
9000	353°	9000	7000	2.2 NM to RW35R	1.1 NM to RW35R		
GP 3.00°			7000	6120			
TCH 55							
	3.2 NM	2.8 NM	6.9 NM	2.7 NM	1.1 NM	1.1 NM	

CATEGORY	A	B	C	D
LPV DA		5570/18	200 (200-1/2)	
LNAV/VNAV DA		5620/24	250 (200-1/2)	
LNAV MDA		5800/24	430 (400-1/2)	

SW-1, 11 JUN 2026 to 09 JUL 2026

SW-1, 11 JUN 2026 to 09 JUL 2026