

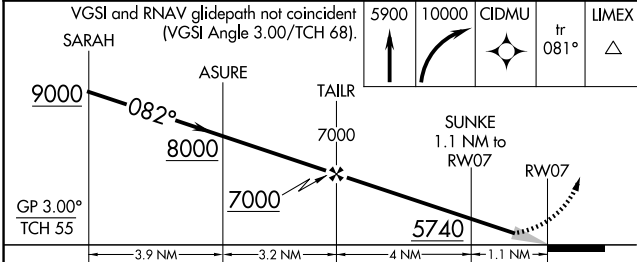
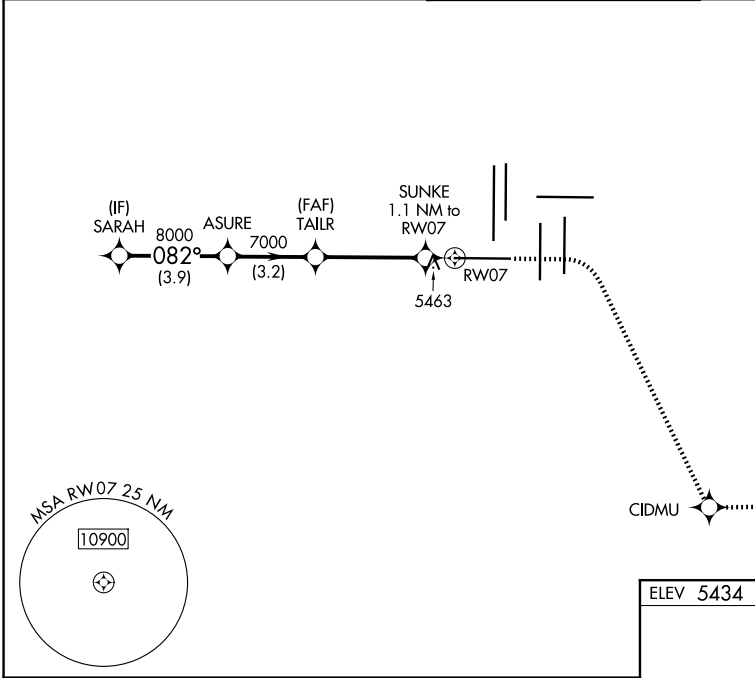
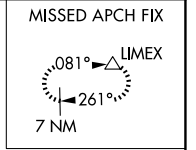
WAAS CH 87128 W07A	APP CRS 082°	Rwy Ldg 12000 TDZE 5352 Apt Elev 5434
--	------------------------	--

RNAV (GPS) Y RWY 7

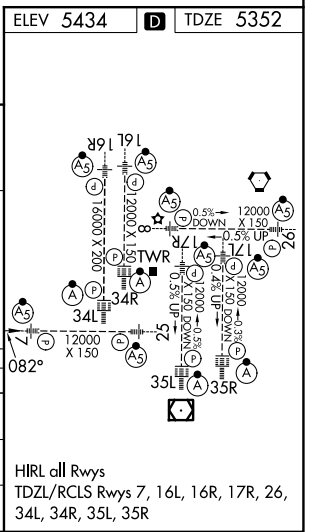
DENVER INTL (DEN)

RNP APCH - GPS.	MALSR	MISSED APPROACH: Climb to 5900 then climbing right turn to 10000 direct CIDMU and on track 081° to LIMEX and hold.
<p>Simultaneous approach authorized. For uncompensated Baro-VNAV systems, LNAV/VNAV NA below -22°C or above 54°C. LNAV procedure NA during simultaneous operations. For inop ALS, increase LNAV/VNAV all Cats visibility to RVR 4500, and LNAV Cat C/D visibility to RVR 5500. Use of FD or AP required during simultaneous operations.</p>		

D-ATIS 125.6 379.9	DENVER APP CON 119.3 307.3 (N) 120.35 379.3 (S)	DENVER TOWER 128.75 273.55	GND CON 121.35 379.175 (W) 121.85 377.1 (E)
------------------------------	---	--------------------------------------	---



CATEGORY	A	B	C	D
LPV DA	5552/18		200 (200-½)	
LNAV/VNAV DA	5626/24		274 (200-½)	
LNAV MDA	5720/24	368 (300-½)	5720/35	368 (300-⅝)



SW-1, 11 JUN 2026 to 09 JUL 2026

SW-1, 11 JUN 2026 to 09 JUL 2026