

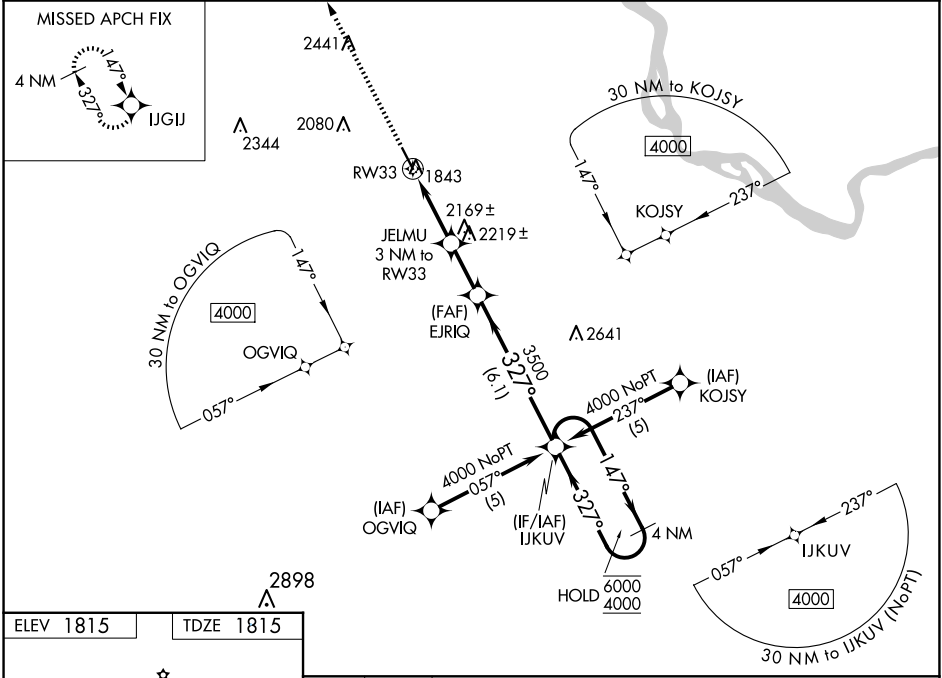
WAAS CH <b>53318</b> <b>W33A</b>	APP CRS <b>327°</b>	Rwy Idg <b>4999</b> TDZE <b>1815</b> Apt Elev <b>1815</b>
--	------------------------	---

# RNAV (GPS) RWY 33

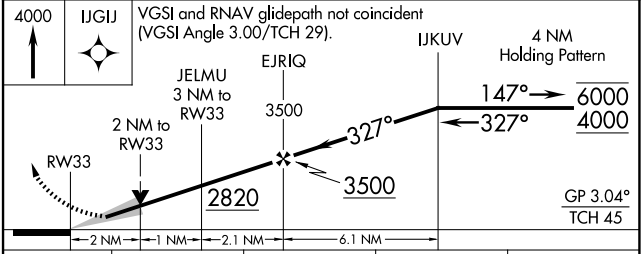
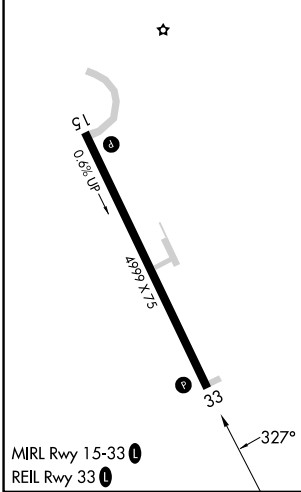
MERCER COUNTY RGNL (HZE)

RNP APCH - GPS.	MISSED APPROACH: Climb to 4000 direct IJGIJ and hold.
For uncompensated Baro-VNAV systems, LNAV/VNAV NA below -18°C or above 54°C.	

AWOS-3PT <b>118.675</b>	MINNEAPOLIS CENTER <b>124.25 236.825</b>	UNICOM <b>122.8 (CTAF)</b>
----------------------------	---	-------------------------------



ELEV 1815	TDZE 1815
-----------	-----------



CATEGORY	A	B	C	D
LPV DA	2193-1 378 (400-1)			NA
LNAV/VNAV DA	2353-1½ 538 (600-1½)			NA
LNAV MDA	2480-1	665 (700-1)	2480-1⅞ 665 (700-1⅞)	NA
<b>C</b> CIRCLING	2480-1	665 (700-1)	2480-1⅞ 665 (700-1⅞)	NA

NC-1, 11 JUN 2026 to 09 JUL 2026

NC-1, 11 JUN 2026 to 09 JUL 2026