

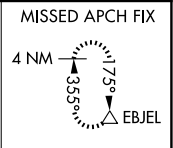
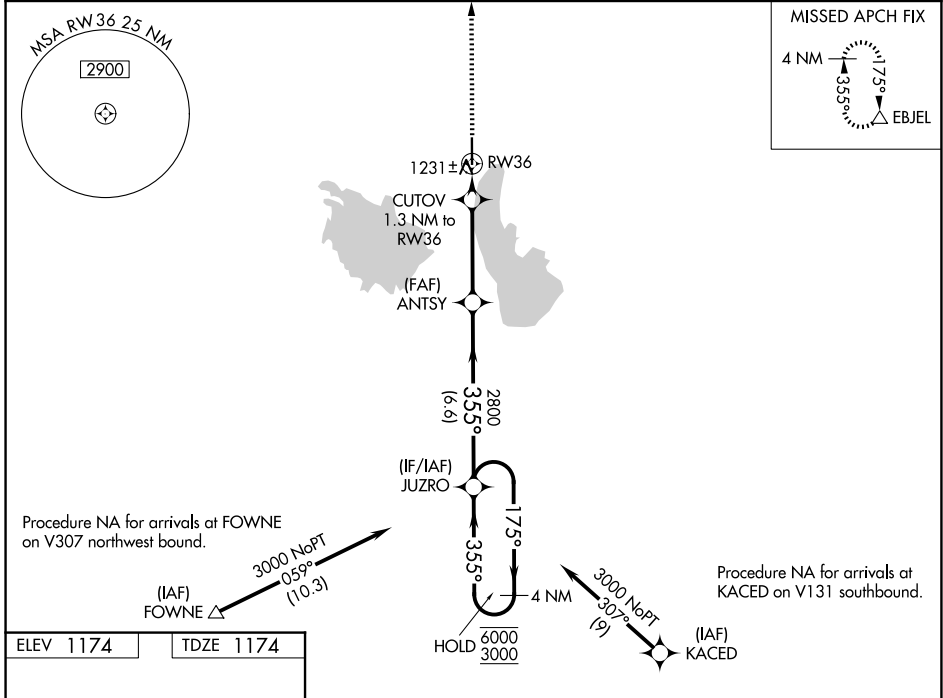
WAAS CH 40222 W36A	APP CRS 355°	Rwy Ldg TDZE 1174 Apt Elev 1174
--	------------------------	---

RNAV (GPS) RWY 36

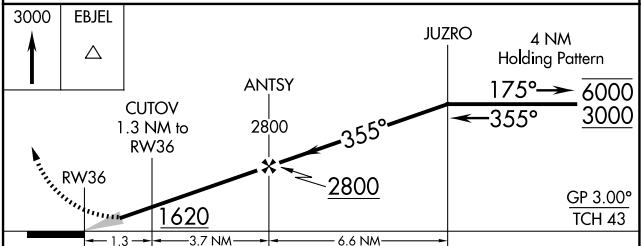
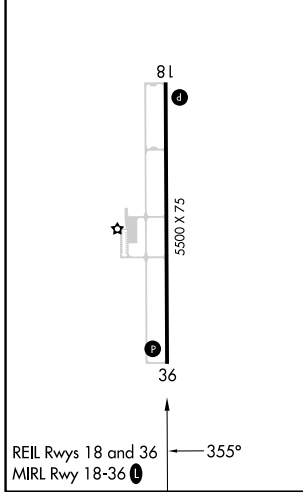
COFFEY COUNTY (UKL)

RNP APCH-GPS.	MISSED APPROACH: Climb to 3000 direct EBJEL and hold.
<p>For uncorrected Baro-VNAV systems, LNAV/VNAV NA below -17°C or above 54°C.</p>	

AWOS-3PT 121.125	KANSAS CITY CENTER 127.725 270.25	UNICOM 123.0 (CTAF) 0
----------------------------	---	---------------------------------



ELEV 1174	TDZE 1174
-----------	-----------



CATEGORY	A	B	C	D
LPV DA	1424-1	250 (300-1)		NA
LNAV/VNAV DA	1424-1	250 (300-1)		NA
LNAV MDA	1500-1	326 (400-1)		NA
CIRCLING	1580-1 406 (500-1)	1640-1 466 (500-1)	1920-2¼ 746 (800-2¼)	NA

NC-2, 11 JUN 2026 to 09 JUL 2026

NC-2, 11 JUN 2026 to 09 JUL 2026