

| | | |
|--|------------------------|---|
| WAAS CH 48830 W31A | APP CRS 313° | Rwy Ldg 4994 TDZE 579 Apt Elev 588 |
|--|------------------------|---|

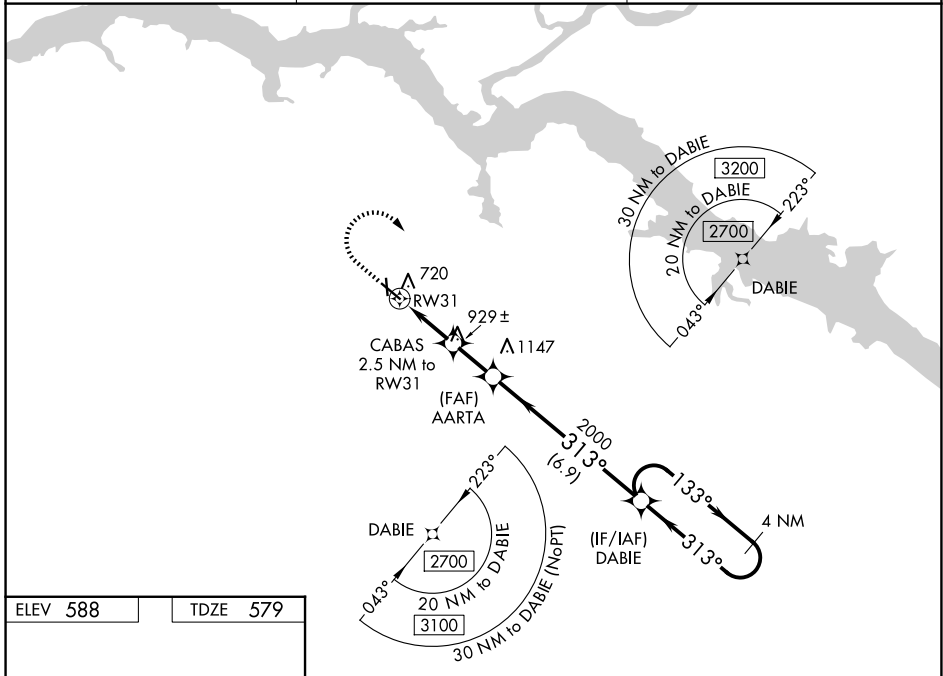
RNAV (GPS) RWY 31

COURTLAND (9A.4)

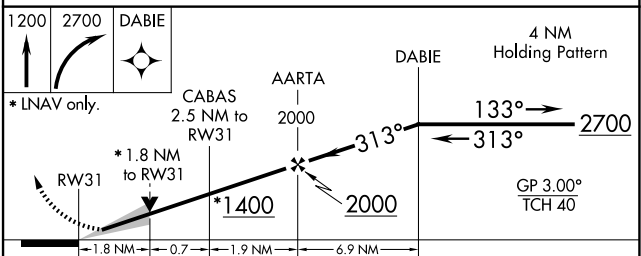
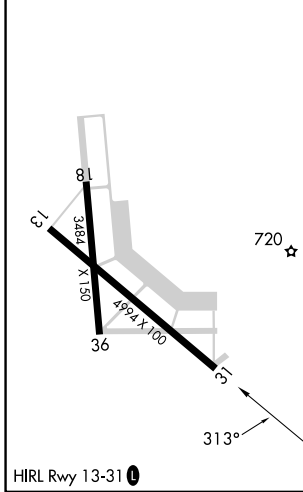
▼ For uncompensated Baro-VNAV systems, LNAV/VNAV NA below -16°C (4°F) or above 40°C (104°F). DME/DME RNP-0.3 NA. When local altimeter setting not received, use Muscle Shoals altimeter setting and increase all DAs 38 feet and all MDAs 40 feet, increase LNAV/VNAV all Cats and LNAV Cats C/D visibility 1/8 SM and Circling Cat D 1/4 SM. VDP and Baro-VNAV NA with Muscle Shoals altimeter setting. Night landing: Rwy 18 NA.

▲ MISSED APPROACH: Climb to 1200 then climbing right turn to 2700 direct DABIE and hold.

| | | |
|---------------------------|---|---------------------------------|
| AWOS-3P 118.525 | HUNTSVILLE APP CON ★ 118.05 239.0 | UNICOM 122.7 (CTAF) 0 |
|---------------------------|---|---------------------------------|



| | |
|-----------------|-----------------|
| ELEV 588 | TDZE 579 |
|-----------------|-----------------|



| CATEGORY | A | B | C | D |
|--------------|-----------------------|-----------------------|-----------------------|-------------------------------|
| LPV DA | | 779-3/4 | 200 (200-3/4) | |
| LNAV/VNAV DA | | 938-1 1/4 | 359 (400-1 1/4) | |
| LNAV MDA | 1180-1 | 601 (600-1) | 1180-1 3/4 | 601 (600-1 1/4) |
| CIRCLING | 1180-1 592 (600-1) | 1240-1 652 (700-1) | 1260-2 672 (700-2) | 1360-2 1/2 772 (800-2 1/2) |

SE-4, 11 JUN 2026 to 09 JUL 2026

SE-4, 11 JUN 2026 to 09 JUL 2026