

WAAS CH 78340 W32A	APP CRS 323°	Rwy Ldg 4002 TDZE 45 Apt Elev 45
--	------------------------	---

RNAV (GPS) RWY 32

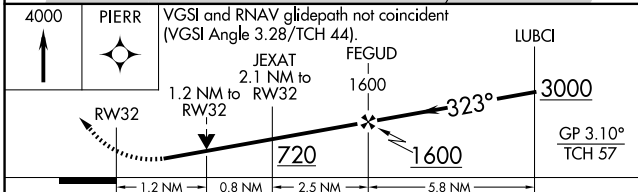
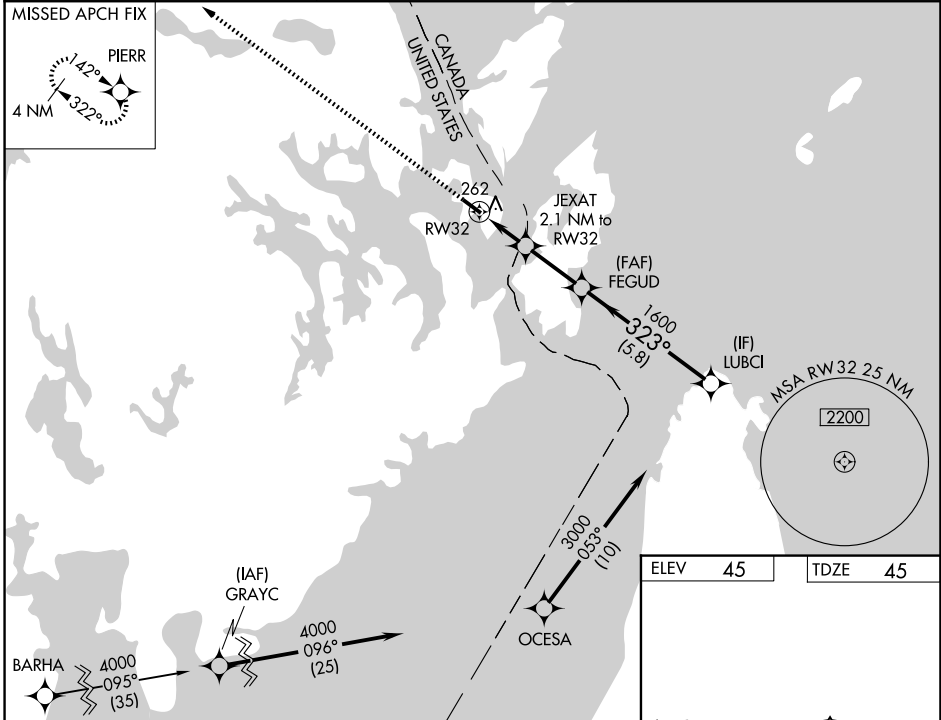
EASTPORT MUNI (EPM)

RNP APCH - GPS.

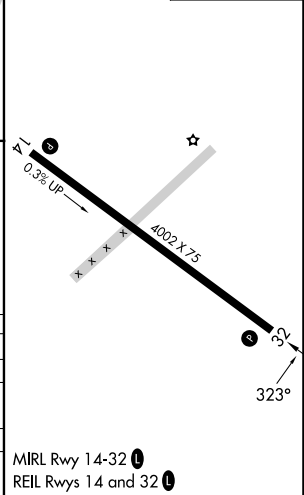
⚠ Circling Rwy 14 NA at night. For uncompensated Baro-VNAV systems, LNAV/VNAV NA below -15°C or above 54°C. Baro-VNAV and VDP NA when using Hancock County/Bar Harbor altimeter setting. Rwy 32 helicopter visibility reduction below 3/4 SM NA. When local altimeter setting not received, use Hancock County/Bar Harbor altimeter setting; increase LPV DA to 531 feet and all visibilities 3/8 SM; increase LNAV/VNAV DA to 576 feet and all visibilities 1/2 SM; increase all MDAs 160 feet and LNAV Cat C/D visibility 3/8 SM and Circling Cats C/D visibilities 3/4 SM.

⚠ MISSED APPROACH: Climb to 4000 direct PIERR and hold, continue climb-in-hold to 4000.

AWOS-AV 122.8	BOSTON CENTER 124.25 290.5	UNICOM 122.8 (CTAF) 0
-------------------------	--------------------------------------	---------------------------------



ELEV 45	TDZE 45
---------	---------



CATEGORY	A	B	C	D
LPV DA	378-1 333 (400-1)			
LNAV/VNAV DA	423-1 378 (400-1)			
LNAV MDA	520-1	475 (500-1)	520-1 3/8	475 (500-1 3/8)
CIRCLING	580-1	535 (600-1)	640-1 1/2	820-2 1/2
			595 (600-1 1/2)	775 (800-2 1/2)

NE-1, 11 JUN 2026 to 09 JUL 2026

NE-1, 11 JUN 2026 to 09 JUL 2026