

WAAS CH <b>82336</b> <b>W33A</b>	APP CRS <b>333°</b>	Rwy Ldg <b>2630</b> TDZE <b>147</b> Apt Elev <b>147</b>
--	------------------------	---

# RNAV (GPS) RWY 33

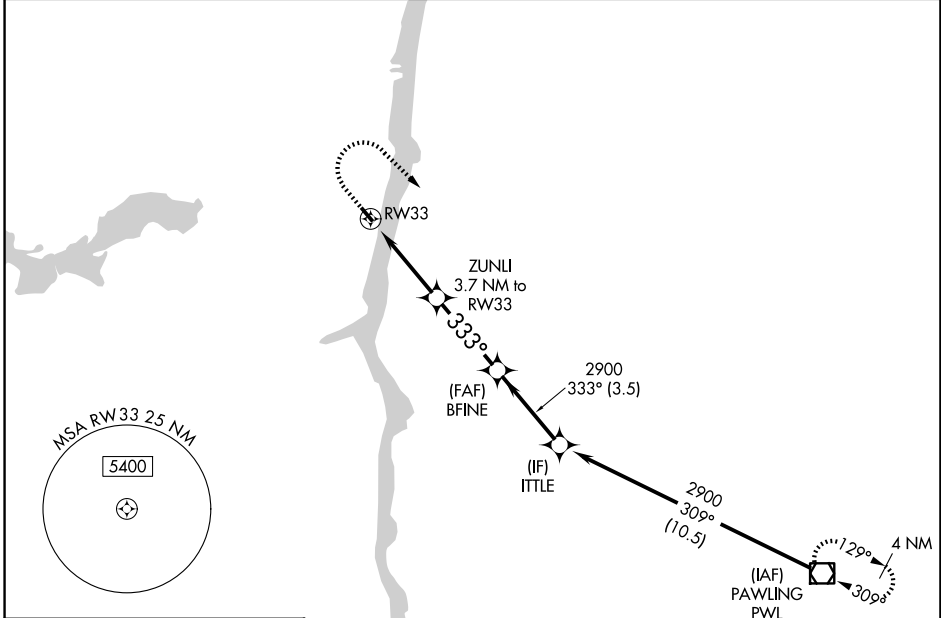
KINGSTON-ULSTER (20N)

RNP APCH - GPS.

**▼** Use Hudson altimeter setting. When not received, use Newburgh altimeter setting and increase all MDA 60 feet. Baro-VNAV NA. Rwy 33 helicopter visibility reduction below 1 SM NA. Straight-in/Circling Rwy 33 at night, operational VGSI required, remain on or above VGSI glidepath until threshold. Circling Rwy 15 NA at night.

**MISSED APPROACH:** Climb to 600, then climbing right turn to 3000 direct PWL VOR/DME and hold.

NEW YORK APP CON <b>132.75 363.1</b>	UNICOM <b>122.8 (CTAF)</b>	<b>123.3</b> <b>①</b>
---	-------------------------------	-----------------------

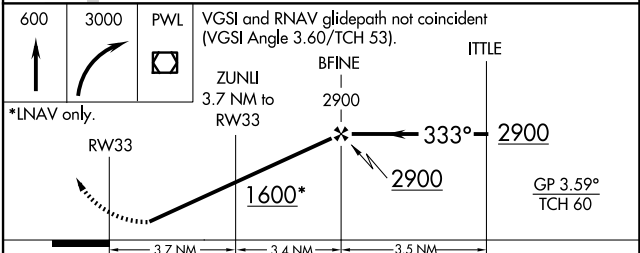
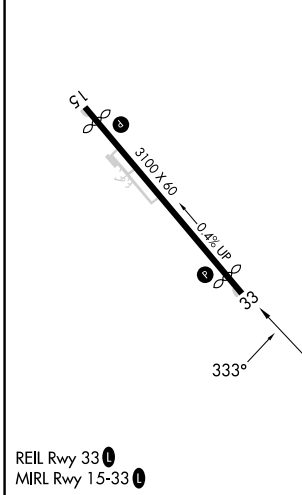


NE-2, 11 JUN 2026 to 09 JUL 2026

NE-2, 11 JUN 2026 to 09 JUL 2026

ELEV 147	<b>D</b>	TDZE 147
----------	----------	----------

Procedure NA for arrivals on PWL VOR/DME airway radials 250 CW 354.



	A	B	C	D
CATEGORY	A	B	C	D
LPV DA	499-1	352 (400-1)		NA
LNAV/VNAV DA	635-1 $\frac{3}{8}$	489 (500-1 $\frac{3}{8}$ )		NA
LNAV MDA	880-1 733 (800-1)	880-1 $\frac{1}{4}$ 733 (800-1 $\frac{1}{4}$ )		NA
CIRCLING	880-1 733 (800-1)	960-1 $\frac{1}{4}$ 813 (900-1 $\frac{1}{4}$ )		NA