

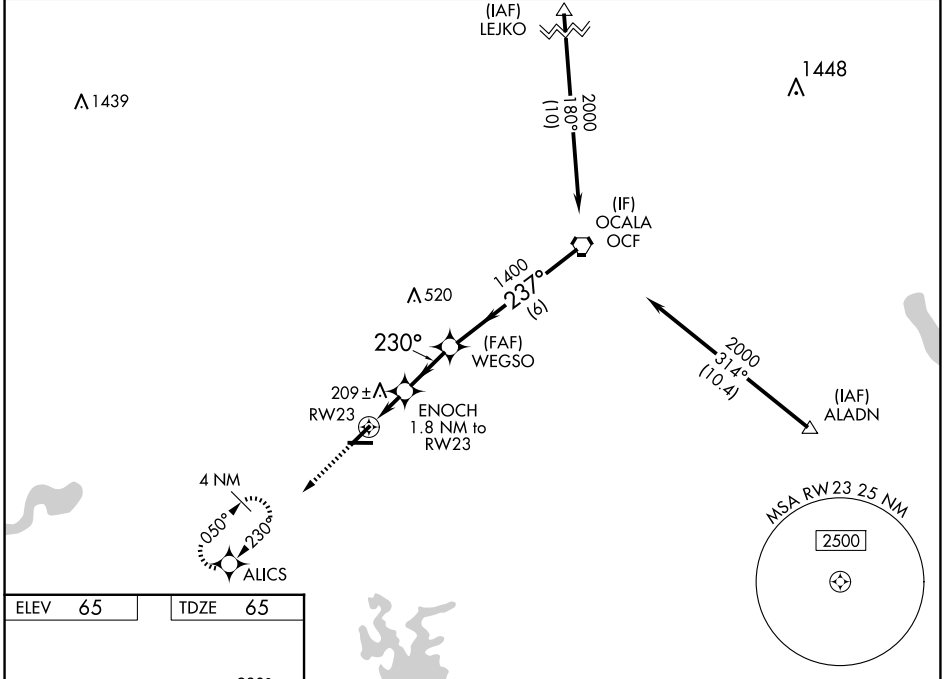
WAAS CH 48828 W23A	APP CRS 230°	Rwy Idg 5000 TDZE 65 Apt Elev 65
--	------------------------	---

RNAV (GPS) RWY 23

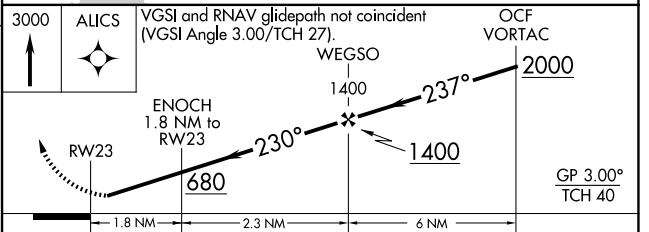
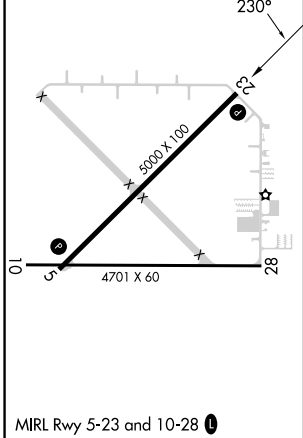
MARION COUNTY (X35)

RNP APCH - GPS. NA Rwy 23 helicopter visibility reduction below 3/4 SM NA. Baro-VNAV NA. Use Ocala altimeter setting; when not received, use Leesburg altimeter setting and increase LPV DA to 424 feet; increase LNAV/VNAV DA to 579 feet; increase all MDAs 60 feet and LNAV visibility Cat C/D 1/2 SM, and Circling visibility Cat D 1/4 SM. Circling Rwy 5, 10, 28 NA at night.	MISSED APPROACH: Climb to 3000 direct ALICS and hold, continue climb-in-hold to 3000.
--	---

OCF AWOS-3PT 128.125	JACKSONVILLE APP CON 118.6 251.15	UNICOM 122.8 (CTAF)
--------------------------------	---	-------------------------------



ELEV 65	TDZE 65
---------	---------



CATEGORY	A	B	C	D
LPV DA		374-1	309 (400-1)	
LNAV/VNAV DA		529-1 3/8	464 (500-1 3/8)	
LNAV MDA	540-1	475 (500-1)	540-1 3/8	475 (500-1 3/8)
CIRCLING	540-1	475 (500-1)	580-1 1/2 515 (600-1 1/2)	760-2 1/4 695 (700-2 1/4)

SE-3, 11 JUN 2026 to 09 JUL 2026

SE-3, 11 JUN 2026 to 09 JUL 2026