

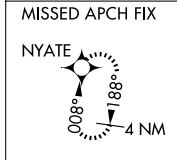
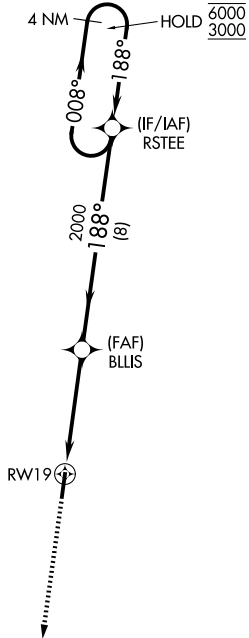
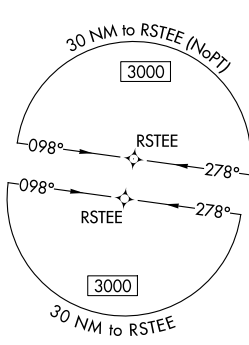
WAAS CH 53624 W19A	APP CRS 188°	Rwy Ldg TDZE Apt Elev	5000 431 436
--	------------------------	-----------------------------	---

RNAV (GPS) RWY 19

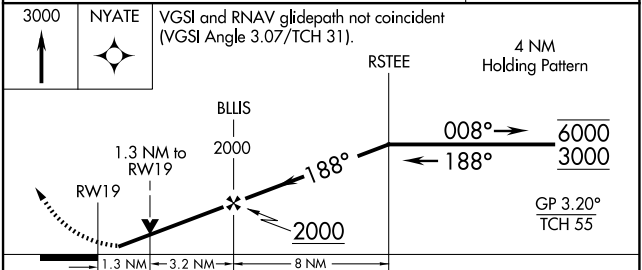
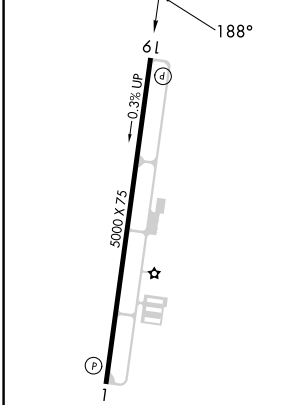
FAYETTE COUNTY (FYE)

RNP APCH - GPS.	<p>▼ Baro-VNAV and VDP NA when using Frederick W Smith Intl altimeter setting. Rwy 19 helicopter visibility reduction below 3/4 SM NA. When local altimeter setting not received, use Frederick W Smith Intl altimeter setting: increase LPV DA to 817 feet and all visibilities 1/2 SM, increase LNAV/VNAV DA to 779 feet; increase all MDA 100 feet and visibility LNAV Cat C 5/8 SM and Circling Cat C 1/2 SM.</p>	<p>MISSED APPROACH: Climb to 3000 direct NYATE and hold.</p>
-----------------	--	---

AWOS-3 119.875	MEMPHIS APP CON 125.8 338.3	CTAF 122.9
--------------------------	---------------------------------------	----------------------



ELEV 436	TDZE 431
----------	----------



CATEGORY	A	B	C	D
LPV DA		721-1	290 (300-1)	NA
LNAV/VNAV DA		683-1	252 (300-1)	NA
LNAV MDA	880-1	449 (500-1)	880-1 3/8 449 (500-1 3/8)	NA
CIRCLING	900-1 464 (500-1)	920-1 484 (500-1)	1160-2 724 (800-2)	NA

SE-1, 11 JUN 2026 to 09 JUL 2026

SE-1, 11 JUN 2026 to 09 JUL 2026