

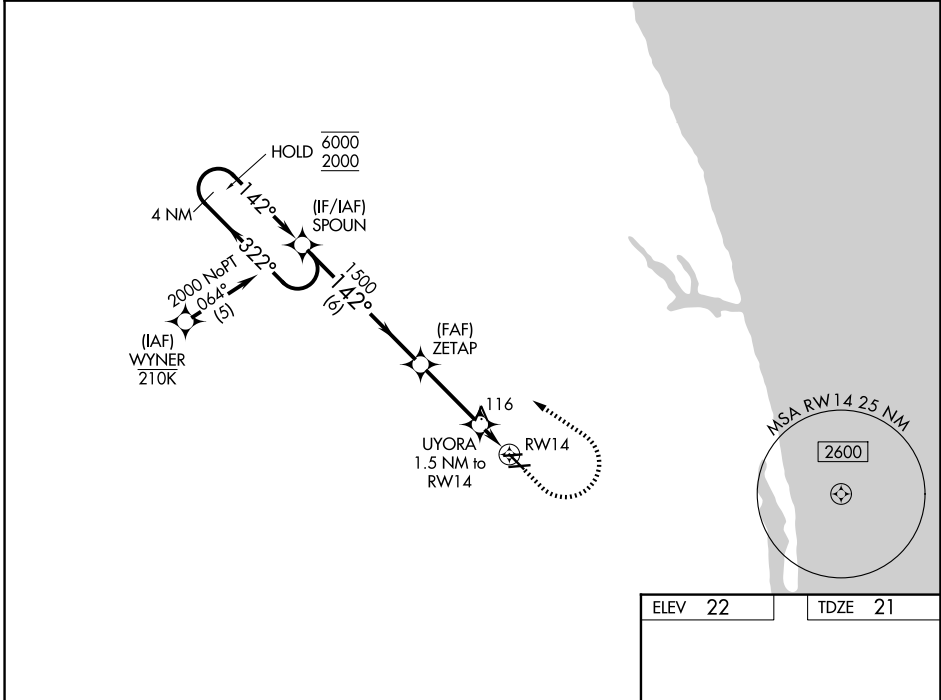
APP CRS	Rwy Ldg	4300
142°	TDZE	21
	Apt Elev	22

RNAV (GPS) RWY 14

NORTH PALM BEACH COUNTY GENERAL AVIATION (F45)

RNP APCH - GPS.	<p>MISSED APPROACH: Climb to 1000 then climbing left turn to 2000 direct SPOUN and hold.</p>
<p>▼ Rwy 14 helicopter visibility reduction below ¾ NA. ▲ Circling NA to Rwys 09L and 27R.</p>	

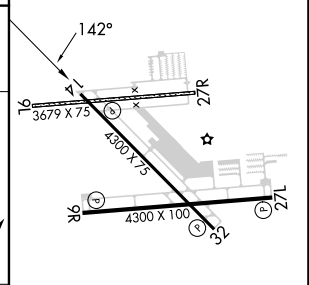
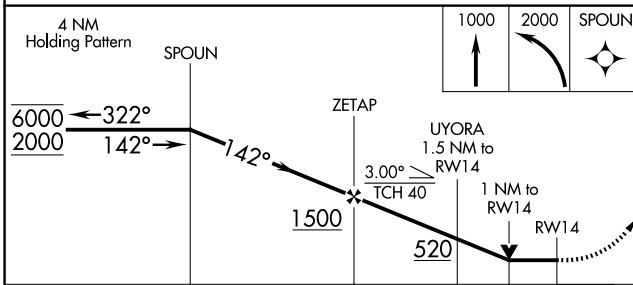
AWOS-3 119.975	PALM BEACH APP CON 128.3 317.4	UNICOM 123.075 (CTAF) 0
--------------------------	--	-----------------------------------



SE-3, 11 JUN 2026 to 09 JUL 2026

SE-3, 11 JUN 2026 to 09 JUL 2026

ELEV 22	TDZE 21
---------	---------



CATEGORY	A	B	C	D
LNVA MDA	380-1		359 (400-1)	
CIRCLING	440-1 418 (500-1)	480-1 458 (500-1)	640-2 618 (700-2)	720-2¼ 698 (700-2¼)

MIRL Rwys 9R-27L and 14-32
REIL Rwys 9R, 14, 27L and 32