

WAAS CH <b>78024</b> <b>W09A</b>	APP CRS <b>092°</b>	Rwy Ldg <b>4300</b> TDZE <b>22</b> Apt Elev <b>22</b>
--	------------------------	---

# RNAV (GPS) RWY 9R

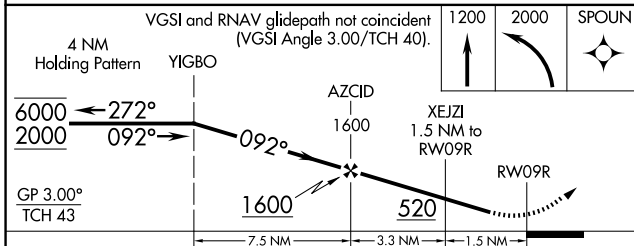
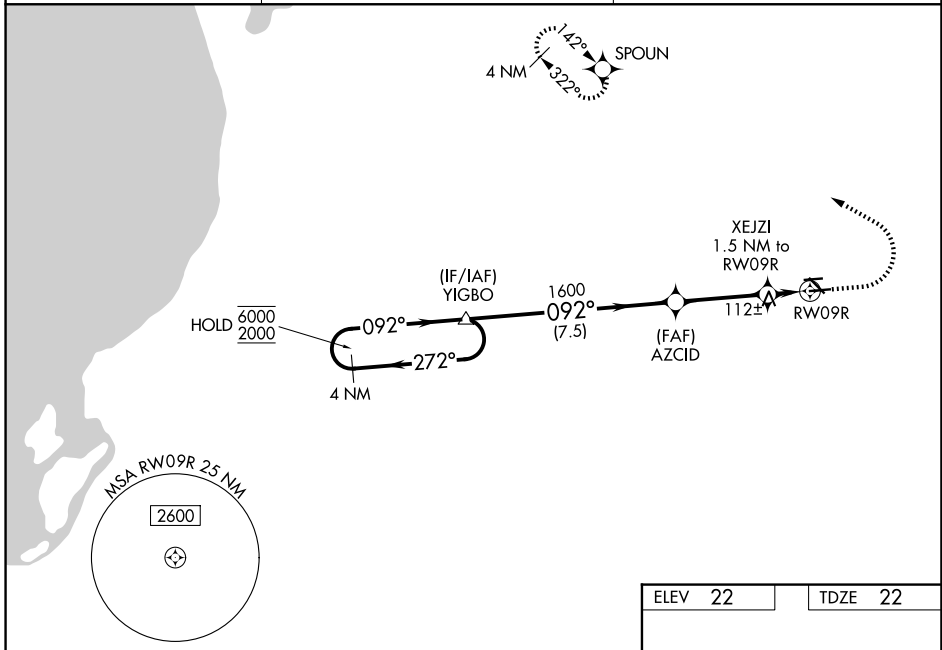
NORTH PALM BEACH COUNTY GENERAL AVIATION (F45)

RNP APCH - GPS.

**⚠** Circling NA to Rwy 09L and 27R. For uncompensated Baro-VNAV systems, LNAV/VNAV NA below -15°C or above 54°C. Rwy 9R helicopter visibility reduction below ¾ SM NA.

MISSED APPROACH: Climb to 1200 then climbing left turn to 2000 direct SPOUN and hold.

AWOS-3 <b>119.975</b>	PALM BEACH APP CON <b>128.3 317.4</b>	UNICOM <b>123.075 (CTAF) 0</b>
--------------------------	--	-----------------------------------



ELEV 22	TDZE 22
---------	---------

The diagram shows an aerial view of the airport with RWY 9R, RWY 27L, and RWY 27R. Taxiway dimensions are noted: 3679 X 75, 4300 X 75, and 4300 X 100. A 092° heading is indicated for the approach to RWY 9R. A note at the bottom states: "MIRL Rwy 9R-27L and 14-32 0 REIL Rwy 9R, 14, 27L and 32 0".

CATEGORY	A	B	C	D
LPV DA		272-7/8 250 (300-7/8)		
LNAV/VNAV DA		403-11/8 381 (400-11/8)		
LNAV MDA	420-1	398 (400-1)	420-11/8	398 (400-11/8)
CIRCLING	440-1 418 (500-1)	480-1 458 (500-1)	640-2 618 (700-2)	720-21/4 698 (700-21/4)

# RNAV (GPS) RWY 9R

SE-3, 11 JUN 2026 to 09 JUL 2026

SE-3, 11 JUN 2026 to 09 JUL 2026