

RNAV (GPS) RWY 21

CLINTON FLD (I66)

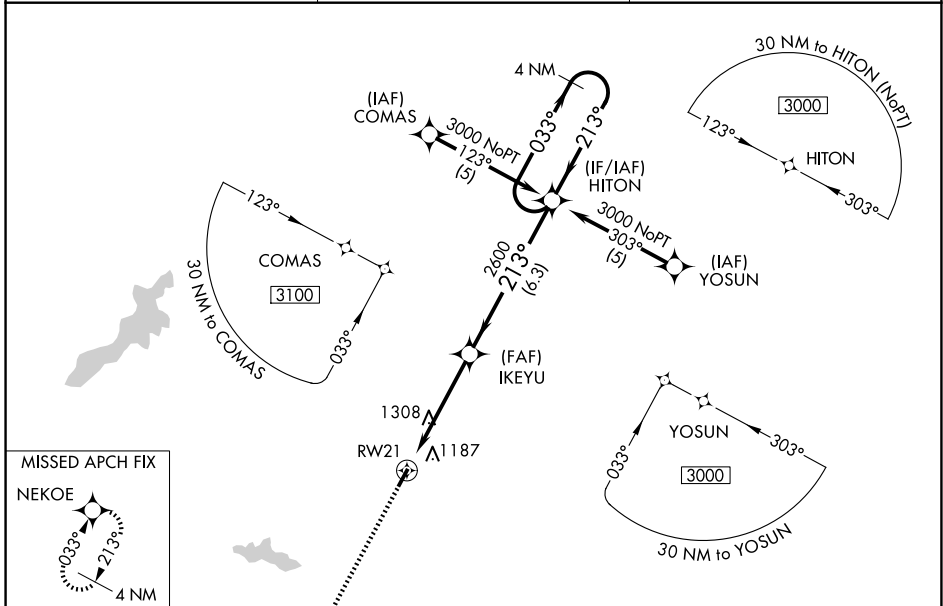
| | | | |
|--|------------------------|-----------------------------|---|
| WAAS CH 99608 W21A | APP CRS 213° | Rwy Ldg TDZE Apt Elev | 3579 1033 1033 |
|--|------------------------|-----------------------------|---|

RNP APCH.

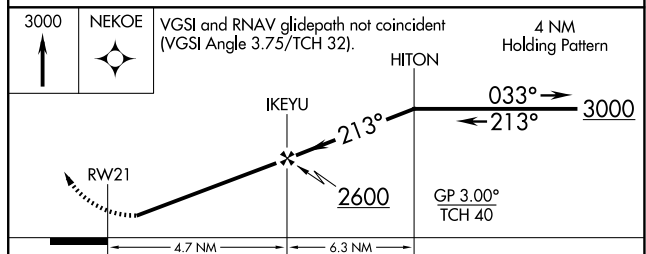
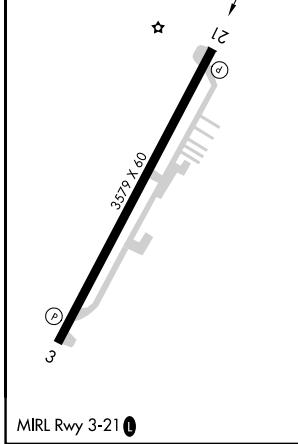
NA Baro-VNAV NA when using Wilmington Air Park altimeter setting. For uncompensated Baro-VNAV systems, LNAV/VNAV NA below -17°C or above 54°C. When local altimeter setting not received, use Wilmington Air Park altimeter setting and increase all DA/MDA 20 feet. Rwy 21 helicopter visibility reduction below ¾ SM NA.

MISSED APPROACH:
Climb to 3000 direct NEKOE and hold.

| | | |
|--------------------------|---|---------------------------------|
| AWOS-3 124.175 | COLUMBUS APP CON 118.85 269.275 | UNICOM 122.725 (CTAF) |
|--------------------------|---|---------------------------------|



| | |
|-----------|-----------|
| ELEV 1033 | TDZE 1033 |
|-----------|-----------|



| CATEGORY | A | B | C | D |
|--------------|----------|---------------|---------------------------|----|
| LPV DA | 1491-1 ¾ | 458 (500-1 ¾) | | NA |
| LNAV/VNAV DA | 1589-2 | 556 (600-2) | | NA |
| LNAV MDA | 1640-1 | 607 (700-1) | 1640-1 ¾ 607 (700-1 ¾) | NA |
| CIRCLING | 1740-1 | 707 (800-1) | 1740-2 707 (800-2) | NA |

EC-2, 11 JUN 2026 to 09 JUL 2026

EC-2, 11 JUN 2026 to 09 JUL 2026