

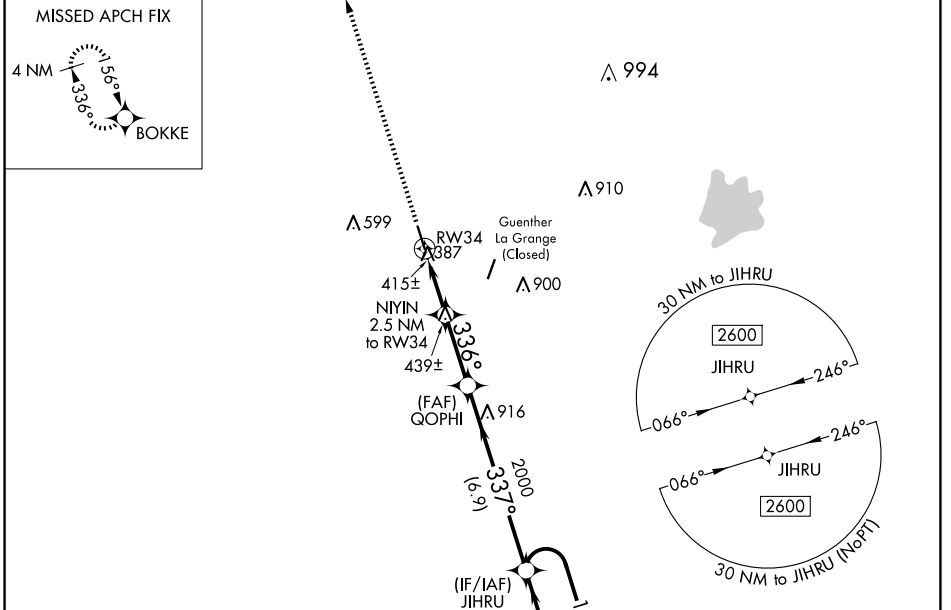
WAAS CH 86929 W34A	APP CRS 336°	Rwy Idg TDZE Apt Elev	5000 324 324
--	------------------------	-----------------------------	---

RNAV (GPS) RWY 34

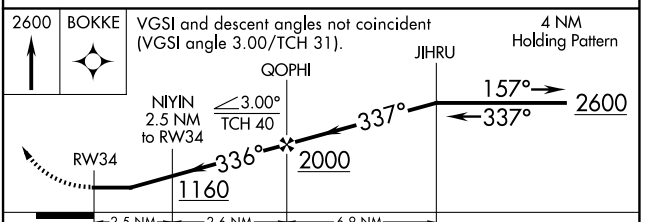
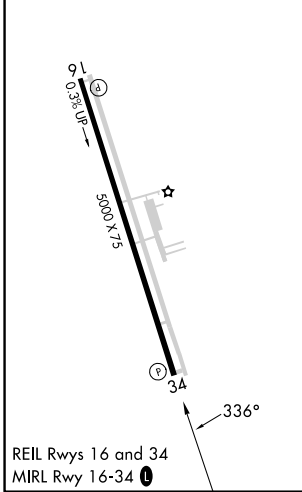
FAYETTE RGNL AIR CENTER (3T5)

RNP APCH.	MISSED APPROACH: Climb to 2600 direct BOKKE and hold.
<p>⚠ When local altimeter setting not received, use Giddings-Lee altimeter setting and increase all MDA 60 feet, increase LP and LNAV Cat C visibility ¼ mile. Rwy 34 helicopter visibility reduction below ¾ SM NA.</p>	

AWOS-3 124.175	AUSTIN APP CON 120.875 270.25	GCO 121.725	UNICOM 122.7 (CTAF) 0
--------------------------	---	-----------------------	---------------------------------



ELEV 324	TDZE 324
----------	----------



CATEGORY	A	B	C	D
LP MDA	700-1 376 (400-1)			NA
LNAV MDA	740-1 416 (500-1)		740-1½ 416 (500-1½)	NA

SC-5, 11 JUN 2026 to 09 JUL 2026

SC-5, 11 JUN 2026 to 09 JUL 2026