

BARMY SIX DEPARTURE (RNAV)

SE-2, 11 JUN 2026 to 09 JUL 2026

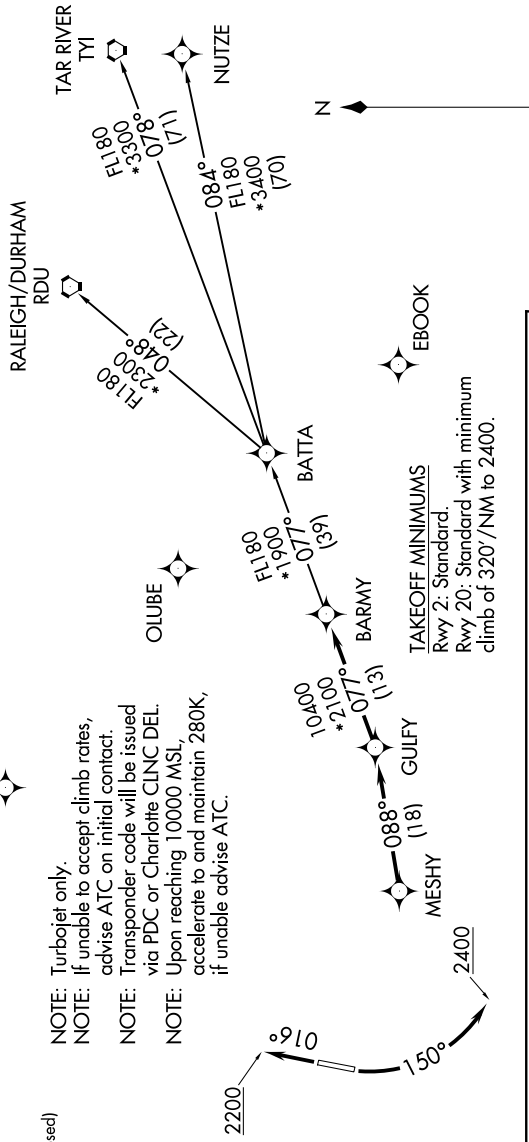
TOP ALTITUDE:
3000

RNAV 1 - DME/DME/IRU or GPS.
RADAR required.

CHARLOTTE DEP CON
128.325 307.8
ATIS
133.675
CINC DEL
118.55
CINC DEL (When twr closed)
127.25
GND CON
121.85
CONCORD TOWER *
134.65 (CTAF)

DATTO

NOTE: Turbojet only.
NOTE: If unable to accept climb rates, advise ATC on initial contact.
NOTE: Transponder code will be issued via PDC or Charlotte CLNC DEL
NOTE: Upon reaching 10000 MSL, accelerate to and maintain 280K, if unable advise ATC.



DEPARTURE ROUTE DESCRIPTION

TAKEOFF RUNWAY 2: Climb on heading 016° to 2200, then on heading assigned by ATC, thence...
 TAKEOFF RUNWAY 20: Climbing left turn heading 150° to 2400, then on heading assigned by ATC, thence...
 ... on RADAR vectors to MESHY, then on depicted route to BARMY. Then on assigned transition. Maintain 3000, expect filed altitude 10 minutes after departure.
 NUTZE TRANSITION [BARMY6.NUTZE]
 RALEIGH/DURHAM TRANSITION [BARMY6.RDU]
 TAR RIVER TRANSITION [BARMY6.TYI]

SE-2, 11 JUN 2026 to 09 JUL 2026