

(ESTRR6.ESTRR) 26134

AL-9155 (FAA)

CONCORD-PADGETT RGNL (JQF)  
CONCORD, NORTH CAROLINA

# ESTRR SIX DEPARTURE (RNAV)

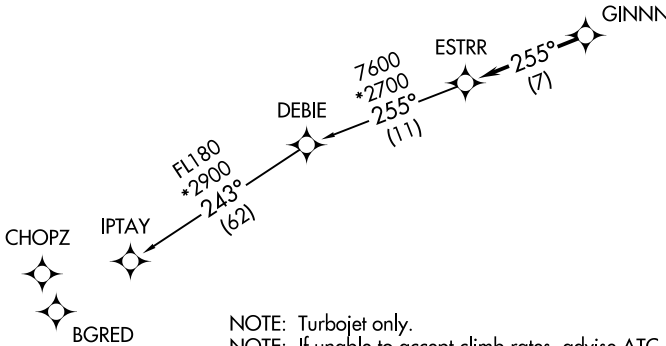
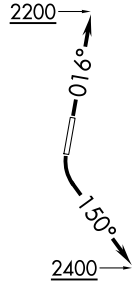
CHARLOTTE DEP CON  
128.325 307.8  
ATIS  
133.675  
CLNC DEL  
118.55  
CLNC DEL (When twr closed)  
127.25  
GND CON  
121.85  
CONCORD TOWER ★  
134.65 (CTAF)

RNAV 1 - DME/DME/IRU or GPS.  
RADAR required.

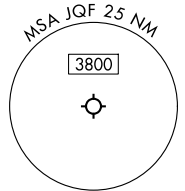
**TOP ALTITUDE:  
3000**

### TAKEOFF MINIMUMS

Rwy 2: Standard.  
Rwy 20: Standard with minimum  
climb of 320'/NM to 2400.



- NOTE: Turbojet only.
- NOTE: If unable to accept climb rates, advise ATC on initial contact.
- NOTE: Transponder code will be issued via PDC or CLT CLNC DEL.
- NOTE: Upon reaching 10000 MSL, accelerate to and maintain 280K, if unable advise ATC.



NOTE: Chart not to scale.

### DEPARTURE ROUTE DESCRIPTION

TAKEOFF RUNWAY 2: Climb on heading 016° to 2200, then on heading assigned by ATC, thence. . .

TAKEOFF RUNWAY 20: Climbing left turn heading 150° to 2400, then on heading assigned by ATC, thence. . .

. . .for RADAR vectors to GINNN, then on track 255° to ESTRR, then on IPTAY Transition. Maintain 3000, expect filed altitude 10 minutes after departure.

IPTAY TRANSITION (ESTRR6.IPTAY)

**ESTRR SIX DEPARTURE (RNAV)**  
(ESTRR6.ESTRR) 14MAY26

CONCORD, NORTH CAROLINA  
CONCORD-PADGETT RGNL (JQF)

SE-2, 11 JUN 2026 to 09 JUL 2026

SE-2, 11 JUN 2026 to 09 JUL 2026