

(KRITR7.KRITR) 26134

AL-9155 (FAA)

CONCORD-PADGETT RGNL (JQF)
CONCORD, NORTH CAROLINA

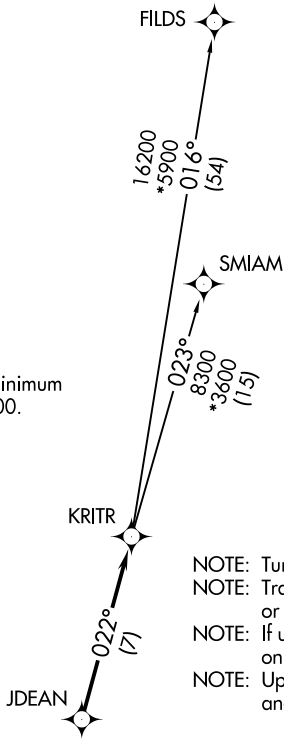
KRITR SEVEN DEPARTURE (RNAV)

CHARLOTTE DEP CON
128.325 307.8
ATIS
133.675
CLNC DEL
118.55
CLNC DEL (When twr closed)
127.25
GND CON
121.85
CONCORD TOWER ★
134.65 (CTAF)

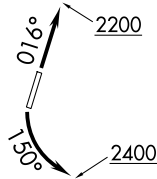
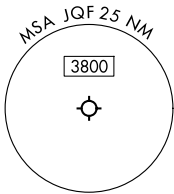
**TOP ALTITUDE:
3000**

RNAV 1 - DME/DME/IRU or GPS.
RADAR required.

TAKEOFF MINIMUMS
Rwy 2: Standard.
Rwy 20: Standard with minimum
climb of 320'/NM to 2400.



- NOTE: Turbojet only.
- NOTE: Transponder code will be issued via PDC or CLT CLNC DEL.
- NOTE: If unable to accept climb rates, advise ATC on initial contact.
- NOTE: Upon reaching 10000 MSL, accelerate to and maintain 280K, if unable advise ATC.



NOTE: Chart not to scale.

DEPARTURE ROUTE DESCRIPTION

TAKEOFF RUNWAY 2: Climb on heading 016° to 2200, then on heading assigned by ATC, thence. . .

TAKEOFF RUNWAY 20: Climbing left turn heading 150° to 2400, then on heading assigned by ATC, thence. . .

. . .for RADAR vectors to JDEAN, then on track 022° to KRITR, then on assigned transition. Maintain 3000. Expect filed altitude 10 minutes after departure.

FILDS TRANSITION (KRITR7.FILDS)
SMIAM TRANSITION (KRITR7.SMIAM)

KRITR SEVEN DEPARTURE (RNAV)

(KRITR7.KRITR) 14MAY26

CONCORD, NORTH CAROLINA
CONCORD-PADGETT RGNL (JQF)

SE-2, 11 JUN 2026 to 09 JUL 2026

SE-2, 11 JUN 2026 to 09 JUL 2026