


WAAS CH 56499 W20A	APP CRS 196°	Rwy Ldg TDZE Apt Elev	6350 699 704
--	------------------------	-----------------------------	---

RNAV (GPS) RWY 20

CONCORD-PADGETT RGNL (JQF)

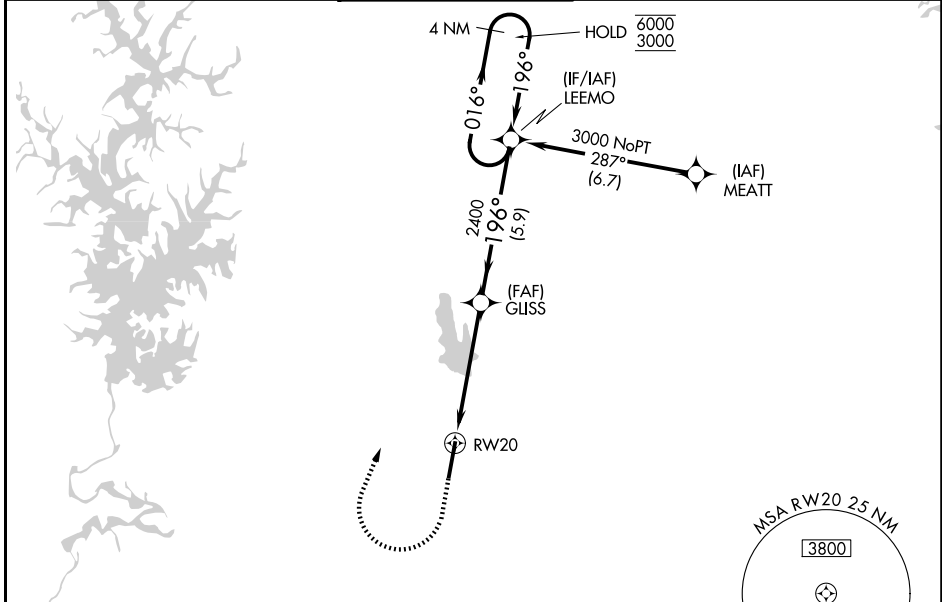
RNP APCH-GPS.

⚠ For uncompensated Baro-VNAV systems, LNAV/VNAV NA below -16°C or above 54°C. Rwy 20 helicopter visibility reduction below 3/4 SM NA. For inop ALS, increase LNAV Cats A and B visibility to 1 SM and Cats C and D visibility to 1 1/4 SM.

MALSR 

MISSED APPROACH: Climb to 1300 then climbing right turn to 3000 direct LEEMO and hold.

ATIS 133.675	CHARLOTTE APP CON 128.325 307.8	CONCORD TOWER ★ 134.65 (CTAF)	GND CON 121.85	UNICOM 122.95
------------------------	---	---	--------------------------	-------------------------



SE-2, 11 JUN 2026 to 09 JUL 2026

SE-2, 11 JUN 2026 to 09 JUL 2026

ELEV 704 **D** TDZE 699

TWR ★

TDZL Rwy 20 **Ⓛ**
REIL Rwy 20 **Ⓛ**
HIRL Rwy 2-20 **Ⓛ**

1300	3000	LEEMO	
------	------	-------	--

CATEGORY	A	B	C	D
LPV DA		1041-3/4	342 (400-3/4)	
LNAV/VNAV DA		1222-1	523 (600-1)	
LNAV MDA	1300-1	601 (600-1)	1300-1 3/8	601 (600-1 1/8)
CIRCLING	1300-1	596 (600-1)	1480-2 1/4 776 (800-2 1/4)	1480-2 1/2 776 (800-2 1/2)