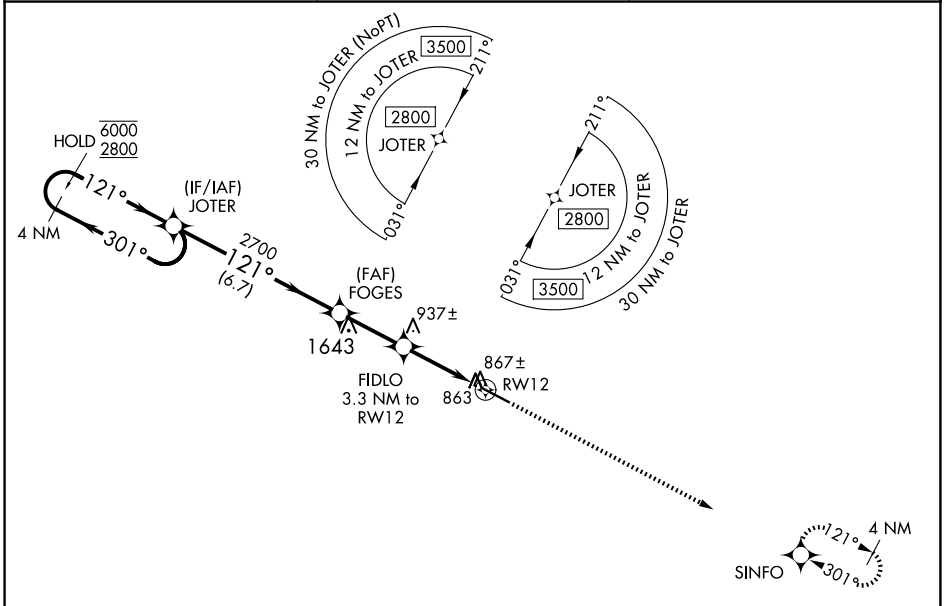


WAAS CH 63115 W12A	APP CRS 121°	Rwy Idg TDZE 791 Apt Elev 798	5525 791 798
--	------------------------	---	---

RNAV (GPS) RWY 12

THOMASTON-UPSON COUNTY (OPN)

RNP APCH-GPS.		MISSED APPROACH: Climb to 2600 direct SINFO and hold.
T A	Rwy 12 helicopter visibility reduction below 3/4 SM NA. For uncompensated Baro-VNAV systems, LNAV/VNAV NA below -16°C or above 54°C.	
AWOS-3 133.975	ATLANTA APP CON ★ 124.2 279.6	UNICOM 122.8 (CTAF)



SE-4, 11 JUN 2026 to 09 JUL 2026

SE-4, 11 JUN 2026 to 09 JUL 2026

ELEV 798	D	TDZE 791
----------	----------	----------

4 NM Holding Pattern		VGSi and RNAV glidepath not coincident (VGSi Angle 3.50/TCH 32).		2600	SINFO
6000 ← 301°		2700		↑	✧
2800 → 121°		1860		121° to RWY 12	
GP 3.00°		2700		↓	
TCH 40		1860		6350 X 100	
6.7 NM		2.6 NM		2.5	
6.7 NM		2.6 NM		0.8	
CATEGORY	A	B	C	D	
LPV DA		1041-3/4	250 (300-3/4)		
LNAV/VNAV MDA		1041-3/4	250 (300-3/4)		
LNAV MDA		1120-1	329 (400-1)		
CIRCLING	1220-1 422 (500-1)	1260-1 462 (500-1)	1260-1 1/2 462 (500-1 1/2)	1680-3 882 (900-3)	MIRL Rwy 12-30

