

WAAS CH 87114 W28A	APP CRS 276°	Rwy Ldg TDZE Apt Elev	5151 110 112
--	------------------------	-----------------------------	---

RNAV (GPS) RWY 28

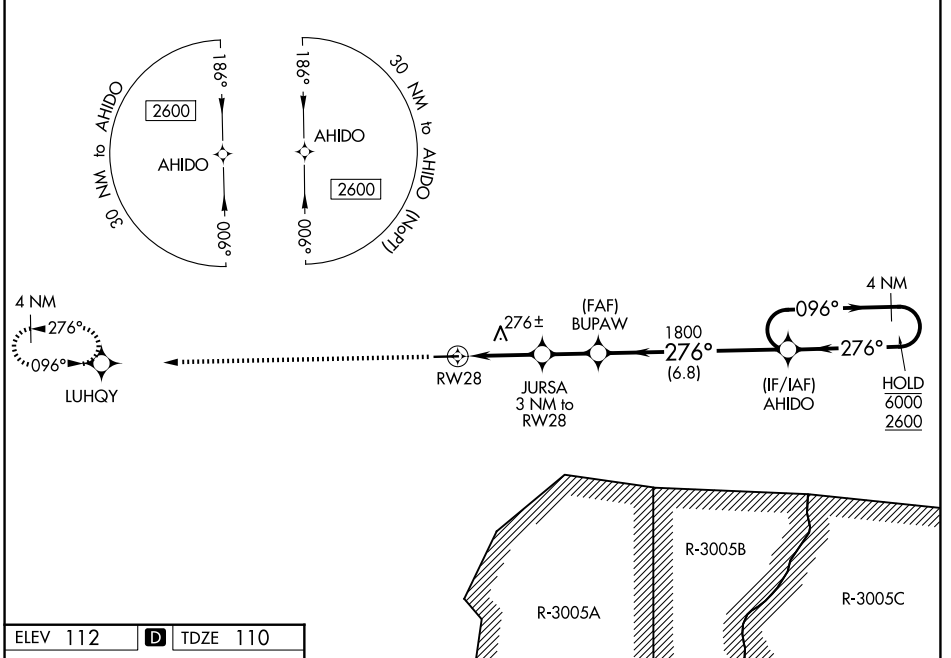
CLAXTON-EVANS COUNTY (C'WV)

RNP APCH GPS.

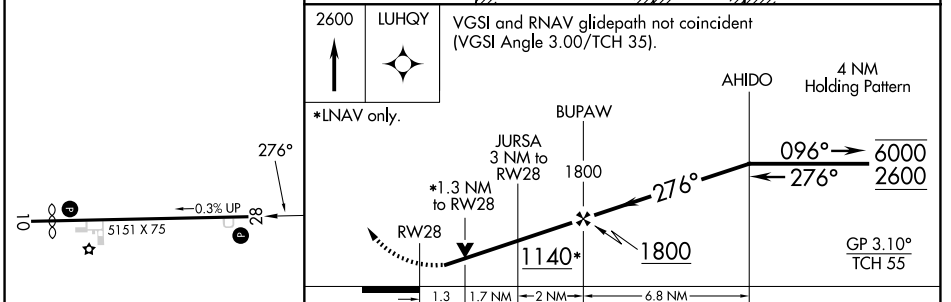
▼ Rwy 28 helicopter visibility reduction below 3/4 SM NA. For uncompensated Baro-VNAV systems, LNAV/VNAV NA below -15°C or above 54°C. Circling Rwy 10 NA at night.

▲ MISSED APPROACH: Climb to 2600 direct LUHQY and hold.

AWOS-3 120.075	JACKSONVILLE CENTER 132.925 363.2	UNICOM 122.8 (CTAF) ①
--------------------------	---	---------------------------------



ELEV 112	D	TDZE 110
----------	----------	----------



2600 LUHQY VGSi and RNAV glidepath not coincident (VGSi Angle 3.00/TCH 35).

*LNAV only.

1.3	1.7 NM	2 NM	6.8 NM
RW28		JURSA 3 NM to RW28	BUPAW 1800
1140*		1800	
0.3% UP		276°	
5151 X 75		AHIDO 4 NM Holding Pattern	
		096° → 6000	
		← 276° 2600	
		GP 3.10° TCH 55	

CATEGORY	A	B	C	D
LPV DA		386-1	276 (300-1)	
LNAV/VNAV DA		403-1	293 (300-1)	
LNAV MDA	540-1	430 (500-1)	540-1 1/4	430 (500-1 1/4)
CIRCLING	580-1 468 (500-1)	780-1 668 (700-1)	860-2 1/4 748 (800-1 1/4)	860-2 1/2 748 (800-2 1/2)

SE-4, 11 JUN 2026 to 09 JUL 2026

SE-4, 11 JUN 2026 to 09 JUL 2026