

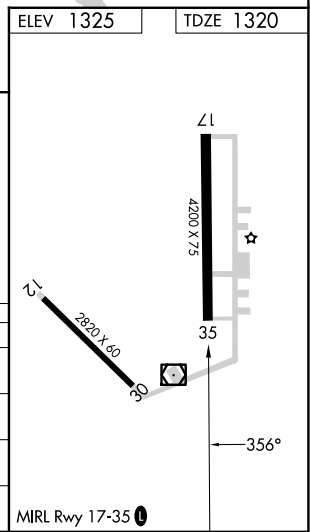
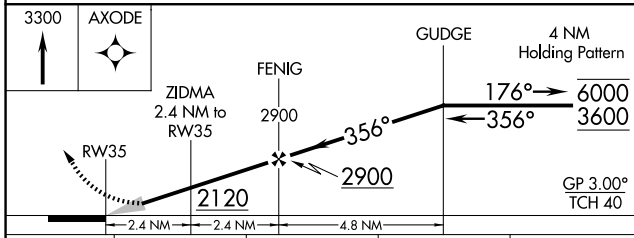
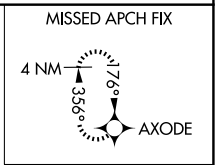
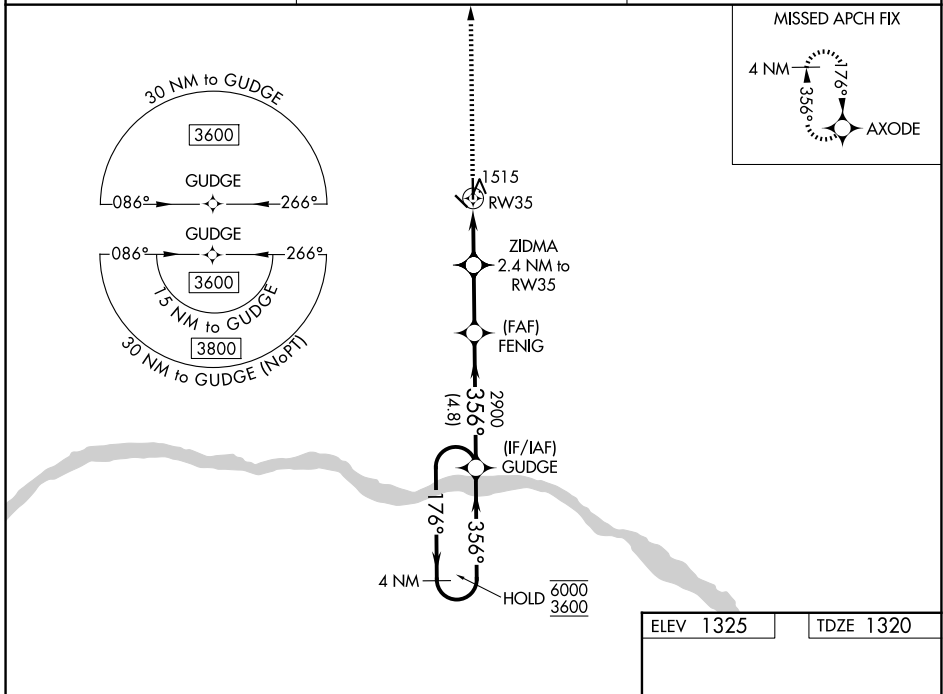
WAAS CH <b>62934</b> <b>W35A</b>	APP CRS <b>356°</b>	Rwy Ldg <b>4200</b> TDZE <b>1320</b> Apt Elev <b>1325</b>
--	------------------------	---

# RNAV (GPS) RWY 35

SCRIBNER STATE (SCB)

RNP APCH - GPS.	MISSED APPROACH: Climb to 3300 direct AXODE and hold.
<p><b>NA</b> Baro-VNAV NA. Circling Rwy 17 NA at night. Use FET altimeter setting; when not received, use AHQ altimeter setting and increase LPV DA to 1629 feet; increase LNAV/VNAV DA to 1767 feet and all visibilities 1/8 SM. Increase all MDAs 40 feet.</p>	

FET AWOS-3 <b>121.275</b>	OMAHA APP CON <b>135.875 354.05</b>	CTAF <b>122.9</b>
------------------------------	--	----------------------



CATEGORY	A	B	C	D
LPV DA	1606-7/8	286 (300-7/8)		NA
LNAV/VNAV DA	1744-1 1/4	424 (500-1 1/4)		NA
LNAV MDA	1840-1	520 (600-1)		NA
CIRCLING	1900-1	575 (600-1)		NA

NC-2, 11 JUN 2026 to 09 JUL 2026

NC-2, 11 JUN 2026 to 09 JUL 2026