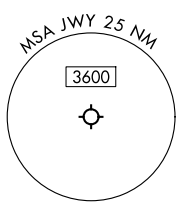


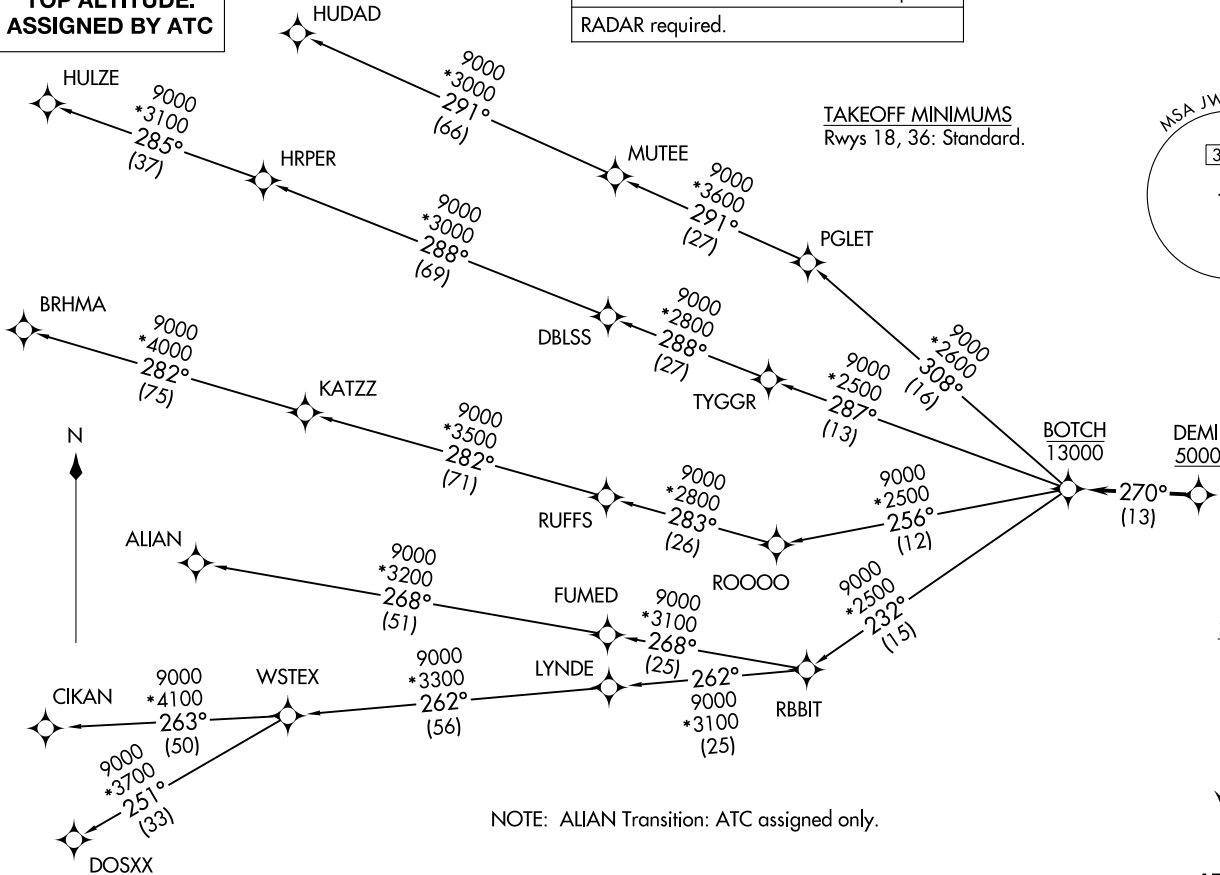
LONE STAR DEP CON
125.2 343.65
CTAF
122.975



TAKEOFF MINIMUMS
Rwys 18, 36: Standard.

RNAV 1 - DME/DME/IRU or GPS required.
RADAR required.

TOP ALTITUDE:
ASSIGNED BY ATC



NOTE: ALIAN Transition: ATC assigned only.

(CONTINUED ON FOLLOWING PAGE)

NOTE: Chart not to scale.

BOTCH TWO DEPARTURE (RNAV)
(BOTCH2.BOTCH) 14MAY26

MIDLOTHIAN/WAXAHACHIE, TEXAS
MID-WAY RGNL (JWY)

(BOTCH2.BOTCH) 26134
BOTCH TWO DEPARTURE (RNAV)

MID-WAY RGNL (JWY)
MIDLOTHIAN/WAXAHACHIE, TEXAS

AL9212 (FAA)

BOTCH TWO DEPARTURE (RNAV)

MIDLOTHIAN/WAXAHACHIE, TEXAS



DEPARTURE ROUTE DESCRIPTION

TAKEOFF RUNWAY 18: Climb on heading 178° to 1700, then on heading 317° or as assigned by ATC, for vectors to cross DEMII at or above 5000, thence. . .

TAKEOFF RUNWAY 36: Climb on heading 358° to 2700, then on heading 315° or as assigned by ATC, for vectors to cross DEMII at or above 5000, thence. . .

. . . on track 270° to cross BOTCH at or below 13000, then on (transition). Maintain ATC assigned altitude, expect filed altitude 10 minutes after departure.

ALIAN TRANSITION (BOTCH2.ALIAN)

BRHMA TRANSITION (BOTCH2.BRHMA)

CIKAN TRANSITION (BOTCH2.CIKAN)

DOSXX TRANSITION (BOTCH2.DOSXX)

HUDAD TRANSITION (BOTCH2.HUDAD)

HULZE TRANSITION (BOTCH2.HULZE)

WSTEX TRANSITION (BOTCH2.WSTEX)

SC-2, 11 JUN 2026 to 09 JUL 2026

SC-2, 11 JUN 2026 to 09 JUL 2026