

KUSSO THREE DEPARTURE (RNAV)  
(KUSSO3.KUSSO) 14MAY26

LONE STAR DEP CON  
125.2 343.65  
CTAF  
122.975

RNAV 1 - DME/DME/IRU or GPS required.  
RADAR required.

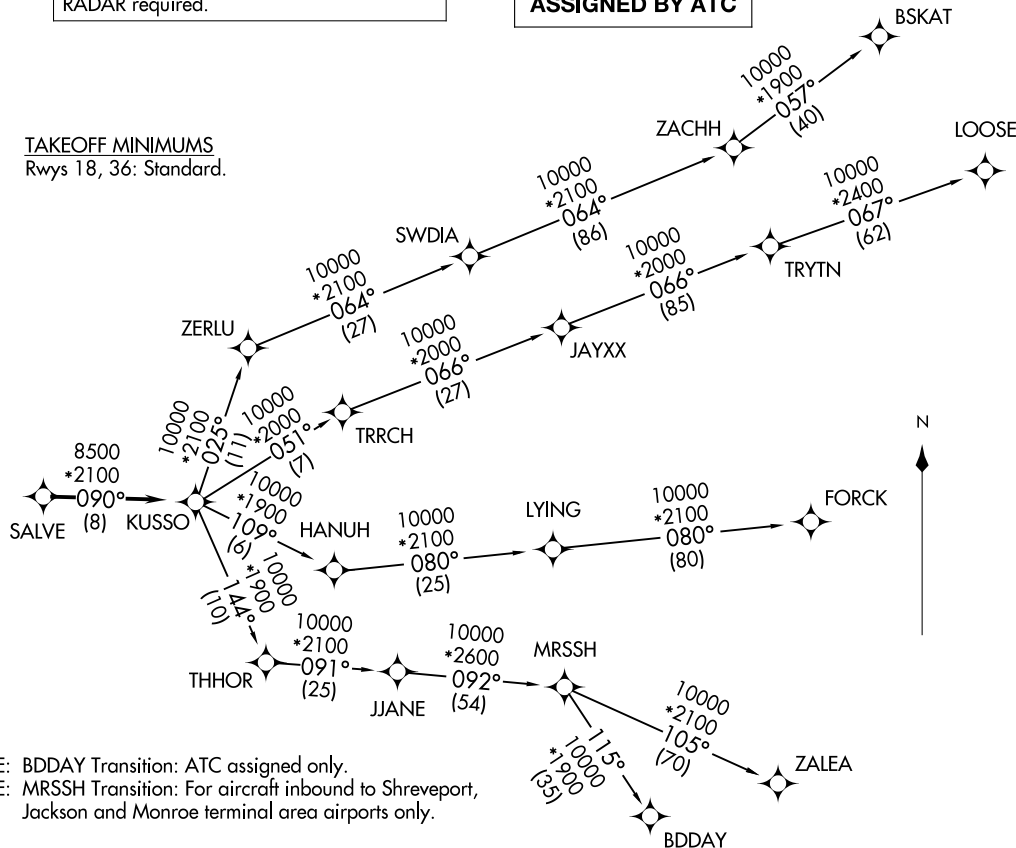
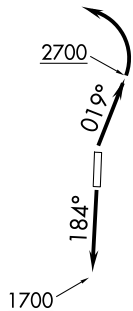
**TOP ALTITUDE:  
ASSIGNED BY ATC**

(KUSSO3.KUSSO) 26134  
KUSSO THREE DEPARTURE (RNAV)

AL-92112 (FAA)

MID-WAY RGNL (JWY)  
MIDLOTHIAN/WAXAHACHIE, TEXAS

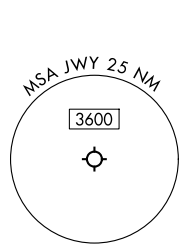
TAKEOFF MINIMUMS  
Rwys 18, 36: Standard.



NOTE: BDDAY Transition: ATC assigned only.  
NOTE: MRSSH Transition: For aircraft inbound to Shreveport,  
Jackson and Monroe terminal area airports only.

(CONTINUED ON FOLLOWING PAGE)

NOTE: Chart not to scale.



MIDLOTHIAN/WAXAHACHIE, TEXAS  
MID-WAY RGNL (JWY)

# KUSSO THREE DEPARTURE (RNAV)



## DEPARTURE ROUTE DESCRIPTION

TAKEOFF RUNWAY 18: Climb on heading 184° to 1700 before proceeding northbound.  
TAKEOFF RUNWAY 36: Climb on heading 019° to 2700 before turning left.

When entering controlled airspace, fly heading assigned by ATC, expect RADAR vectors to SALVE, then on track 090° to KUSSO, then on assigned transition. Maintain ATC assigned altitude, expect filed altitude 10 minutes after departure.

- BDDAY TRANSITION (KUSSO3.BDDAY)
- BSKAT TRANSITION (KUSSO3.BSKAT)
- FORCK TRANSITION (KUSSO3.FORCK)
- LOOSE TRANSITION (KUSSO3.LOOSE)
- MRSSH TRANSITION (KUSSO3.MRSSH)
- ZALEA TRANSITION (KUSSO3.ZALEA)

SC-2, 11 JUN 2026 to 09 JUL 2026

SC-2, 11 JUN 2026 to 09 JUL 2026