

APP CRS	Rwy Ldg	2621
297°	TDZE	6
	Apt Elev	6

RNAV (GPS) Z RWY 30

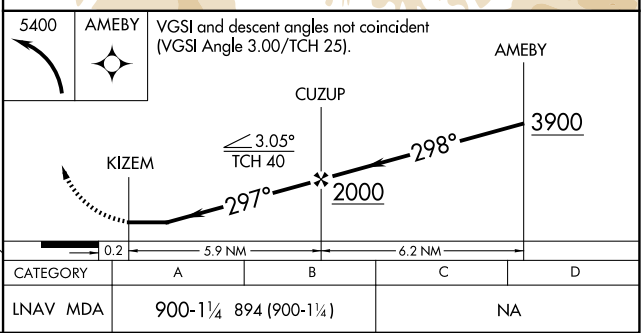
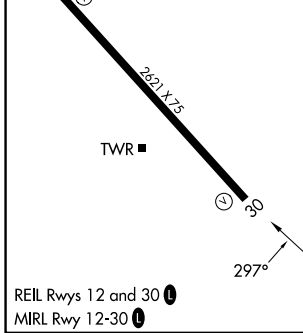
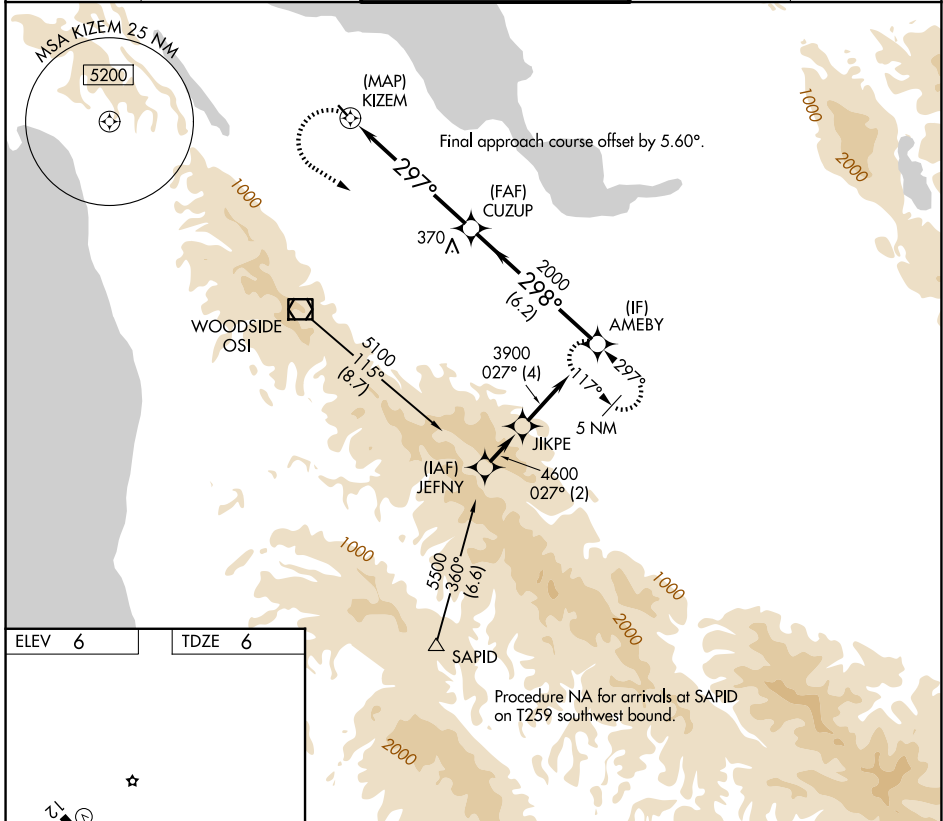
SAN CARLOS (SQL)

RNP APCH - GPS.

▽
▲ Rwy 30 helicopter visibility reduction below 3/4 SM NA.

MISSED APPROACH: Climbing left turn to 5400 direct AMEBY and hold, continue climb-in-hold to 5400. Missed approach requires minimum climb of 340 feet per NM to 1300; if unable to meet climb gradient, see RNAV (GPS) Y RWY 30.

ATIS 125.9	NORCAL APP CON 133.95 317.6	SAN CARLOS TOWER ★ 119.0 (CTAF) 326.2	GND CON 121.6	UNICOM 122.95
----------------------	---------------------------------------	---	-------------------------	-------------------------



SW-2, 11 JUN 2026 to 09 JUL 2026

SW-2, 11 JUN 2026 to 09 JUL 2026