

# CHIEF NINE DEPARTURE

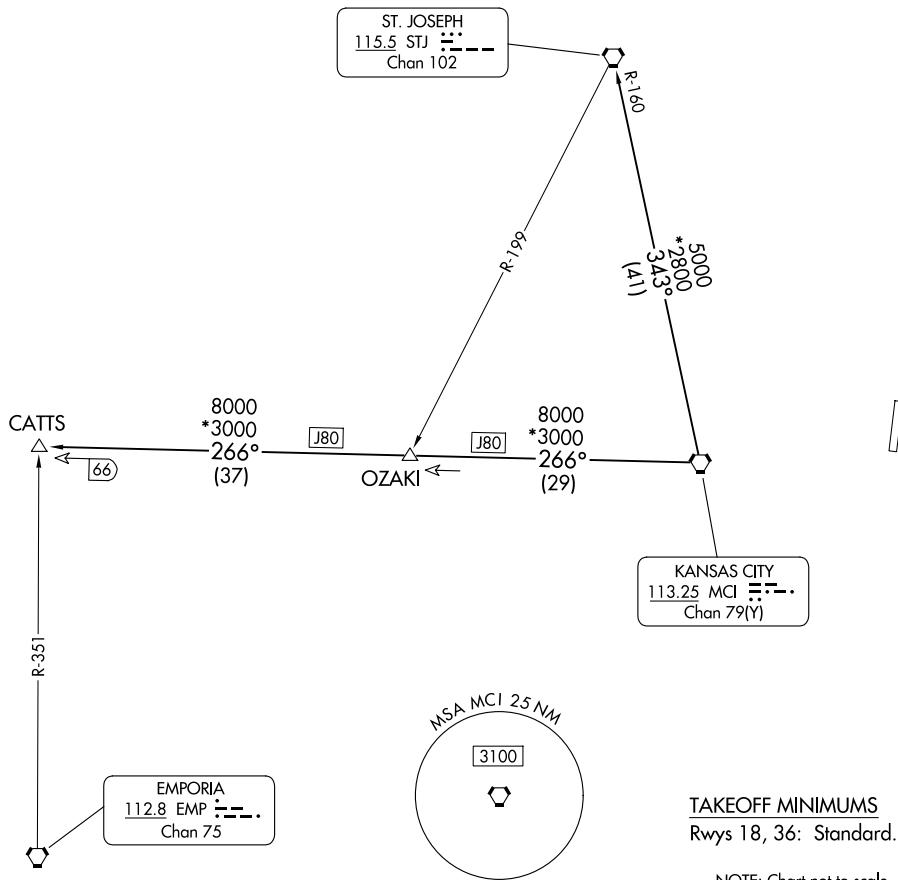
AL-9229 (FAA)

MIDWEST NTL AIR CENTER (GPH)  
MOSBY, MISSOURI

KANSAS CITY DEP CON  
118.4 307.35  
CLNC DEL  
118.2

**TOP ALTITUDE:  
10000**

**RADAR required.**



NC-3, 11 JUN 2026 to 09 JUL 2026

NC-3, 11 JUN 2026 to 09 JUL 2026

**TAKEOFF MINIMUMS**  
Rwys 18, 36: Standard.

NOTE: Chart not to scale.



## DEPARTURE ROUTE DESCRIPTION

**TAKEOFF ALL RUNWAYS:** Climb on assigned heading for RADAR vectors to appropriate route. Maintain 10000 or as assigned by ATC, expect filed altitude 10 minutes after departure.

**CATTS TRANSITION (CHIEF9.CATTS):** From over MCI VORTAC on MCI R-266 to CATTS.

**ST. JOSEPH TRANSITION (CHIEF9.STJ):** From over MCI VORTAC on MCI R-343 and STJ R-160 to STJ VORTAC.

# CHIEF NINE DEPARTURE