

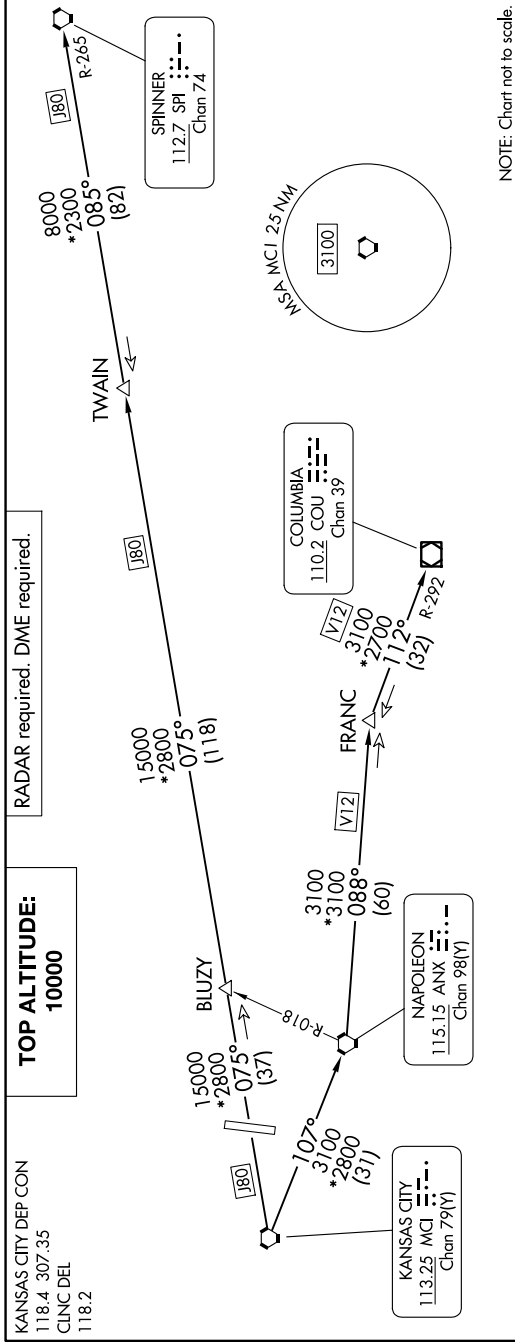
LAKES FIVE DEPARTURE

AL-9229 (FAA)

MIDWEST NTL AIR CENTER (GPH)

MOSBY, MISSOURI

9202 20R 60 01 92022 N00R 11 '8-CN



NOTE: Chart not to scale.

DEPARTURE ROUTE DESCRIPTION

- TAKEOFF ALL RUNWAYS:** Climb on assigned heading for RADAR vectors to appropriate route. Maintain 10000 or as assigned by ATC. Expect filed altitude 10 minutes after departure.
- COLUMBIA TRANSITION (LAKES5.COJ):** From over MCI VORTAC on MCI R-107 to ANX VORTAC, then on ANX R-088 and COU R-292 to COU VOR/DME.
- FRANC TRANSITION (LAKES5.FRANC):** From over MCI VORTAC on MCI R-107 to ANX VORTAC, then on ANX R-088 to FRANC.
- SPINNER TRANSITION (LAKES5.SPI):** From over MCI VORTAC on MCI R-075 and SPI R-265 to TWAIN, then on SPI R-265 to SPI VORTAC.
- TWAIN TRANSITION (LAKES5.TWAIN):** From over MCI VORTAC on MCI R-075 and SPI R-265 to TWAIN.



TAKEOFF MINIMUMS
 Rwys 18, 36: Standard.

LAKES FIVE DEPARTURE

(LAKES5.MCI) 05OCT23

MOSBY, MISSOURI

MIDWEST NTL AIR CENTER (GPH)