

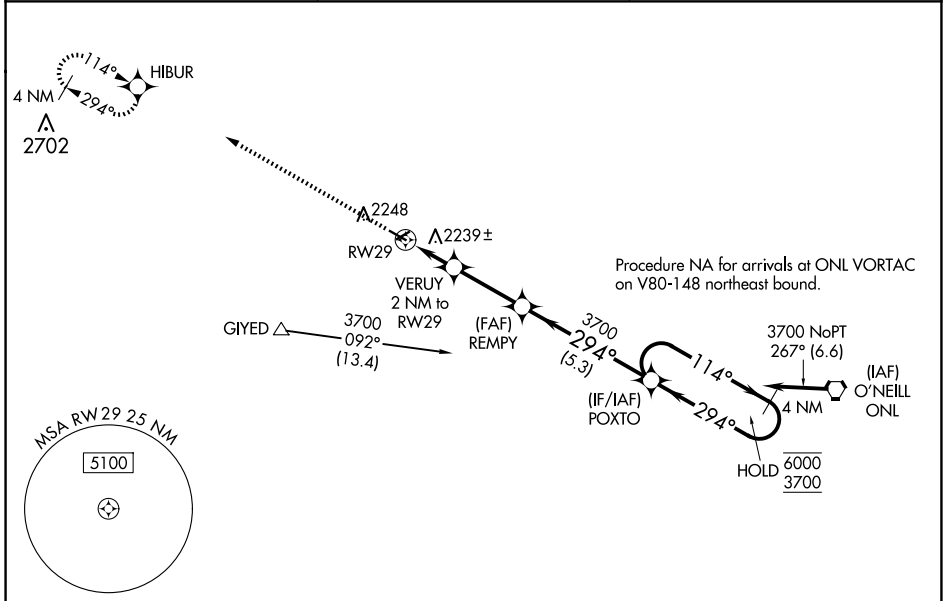
WAAS CH <b>53627</b> <b>W29A</b>	APP CRS <b>294°</b>	Rwy Idg TDZE <b>2130</b> Apt Elev <b>2131</b>
--	------------------------	---

# RNAV (GPS) RWY 29

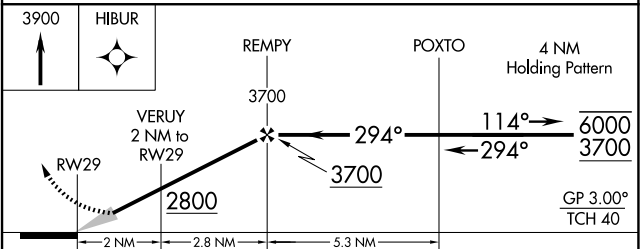
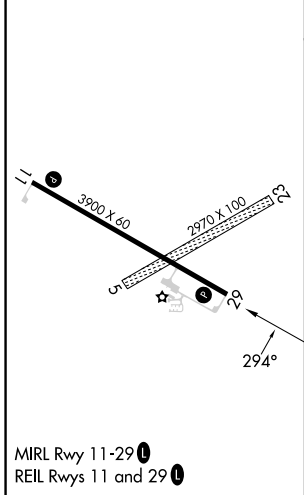
STUART-ATKINSON MUNI (8V2)

RNP APCH - GPS.	MISSED APPROACH: Climb to 3900 direct HIBUR and hold.
<p>Baro-VNAV NA. Circling NA to Rwy 5 and 23. Use ONL altimeter setting; when not received, use ANW altimeter setting and increase LPV DA to 2538 feet and all visibilities to 1 3/8 SM, LNAV/VNAV DA to 2563 feet and all visibilities to 1 1/2 SM, increase all MDAs 120 feet.</p>	

ONL AWOS-3 <b>121.125</b>	MINNEAPOLIS CENTER <b>128.0 257.95</b>	CTAF <b>122.9</b>
------------------------------	---	----------------------



ELEV 2131	TDZE 2130
-----------	-----------



CATEGORY	A	B	C	D
LPV DA	2432-1	302 (400-1)		NA
LNAV/VNAV DA	2457-1 1/8	327 (400-1 1/8)		NA
LNAV MDA	2560-1	430 (500-1)		NA
CIRCLING	2620-1 489 (500-1)	2640-1 509 (600-1)		NA

NC-2, 11 JUN 2026 to 09 JUL 2026

NC-2, 11 JUN 2026 to 09 JUL 2026