

APP CRS <b>334°</b>	Rwy Ldg TDZE Apt Elev	<b>N/A</b> <b>N/A</b> <b>150</b>
------------------------	-----------------------------	--

**RNAV (GPS)-B**  
ORLANDO APOPKA (X04)

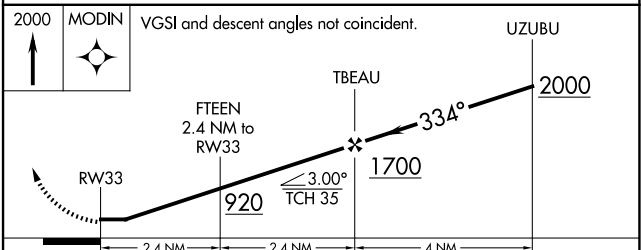
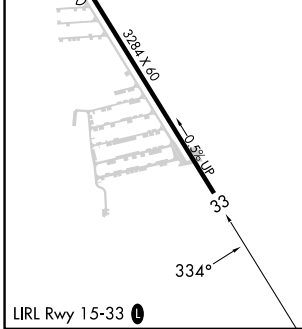
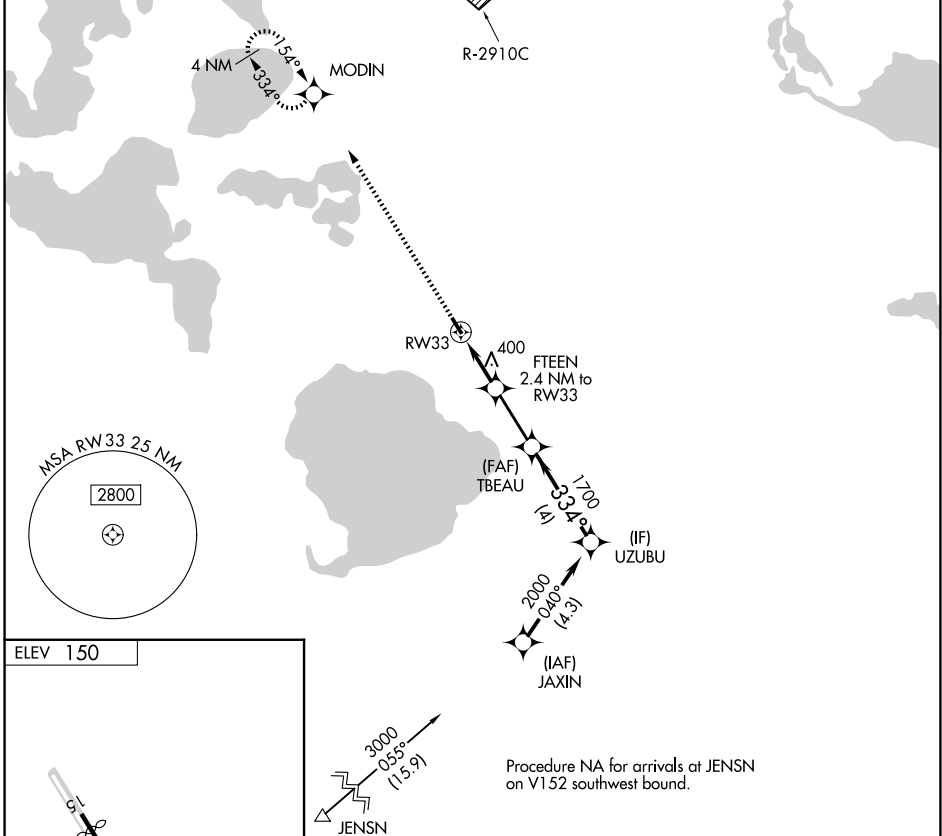
**NA** DME/DME RNP-0.3 NA. Procedure NA at night. Visibility reduction by helicopters NA. Use Leesburg Intl altimeter setting; when not received, use Executive altimeter setting.

**MISSED APPROACH:** Climb to 2000 direct MODIN and hold.

LEE ASOS  
**134.325**

ORLANDO APP CON  
**135.3 351.9**

UNICOM  
**123.05 (CTAF)**



CATEGORY	A	B	C	D
CIRCLING	700-1 550 (600-1)	840-1 690 (700-1)	NA	

SE-3, 11 JUN 2026 to 09 JUL 2026

SE-3, 11 JUN 2026 to 09 JUL 2026