

WAAS CH 70633 W34A	APP CRS 339°	Rwy Ldg TDZE Apt Elev	4007 1364 1368
--	------------------------	-----------------------------	---

RNAV (GPS) RWY 34

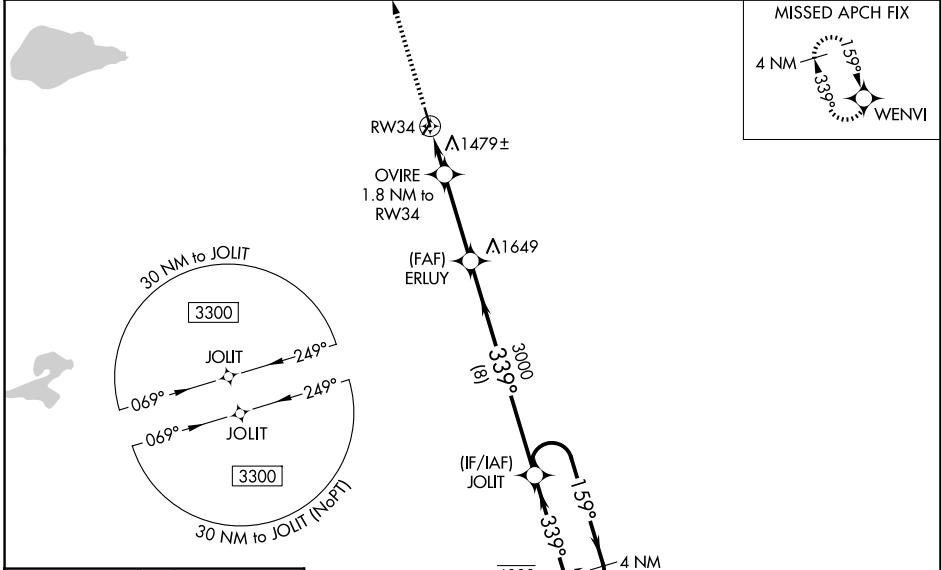
WADENA MUNI (ADC)

RNP APCH - GPS.

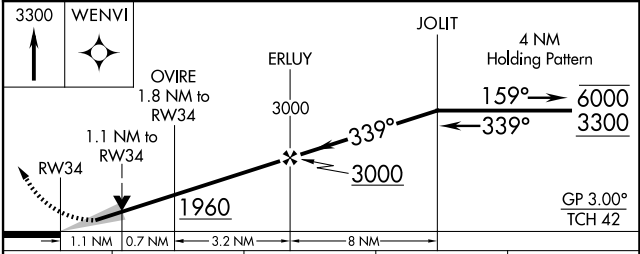
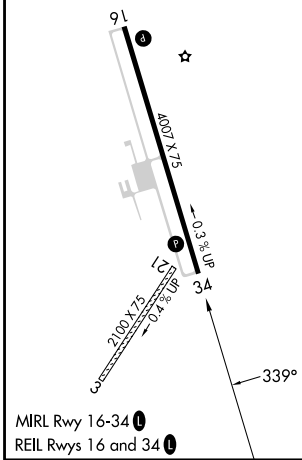
⚠ Baro-VNAV and VDP NA when using SAZ altimeter setting. For uncompensated Baro-VNAV systems, LNAV/VNAV NA below -17°C or above 54°C. Circling NA to Rwy's 3 and 21. When local altimeter setting not received, use SAZ altimeter setting and increase LPV DA to 1665 feet and all visibilities 1/8 SM. Increase LNAV/VNAV DA to 1842 feet and all visibilities 1/8 SM. Increase all MDAs 60 feet and LNAV visibility Cat C 1/4 SM, and Circling visibility Cat C 1/4 SM.

MISSED APPROACH: Climb to 3300 direct WENVI and hold.

AWOS-3PT 118.875	MINNEAPOLIS CENTER 126.1 269.2	GCO 121.725	UNICOM 122.8 (CTAF) 0
----------------------------	--	-----------------------	---------------------------------



ELEV 1368	TDZE 1364
-----------	-----------



CATEGORY	A	B	C	D
LPV DA	1614-1	250 (300-1)		NA
LNAV/VNAV DA	1791-1½	427 (500-1½)		NA
LNAV MDA	1740-1	376 (400-1)	1740-1½ 376 (400-1½)	NA
CIRCLING	1780-1 412 (500-1)	1820-1 452 (500-1)	1940-1½ 572 (600-1½)	NA

NC-1, 11 JUN 2026 to 09 JUL 2026

NC-1, 11 JUN 2026 to 09 JUL 2026