

WAAS CH 42822 W24A	APP CRS 247°	Rwy Ldg TDZE Apt Elev	5500 665 665
--	------------------------	-----------------------------	---

RNAV (GPS) RWY 24

SANDUSKY COUNTY RGNL (S24)

RNP APCH - GPS.

Baro-VNAV and VDP NA when using TOL altimeter setting. For uncompensated Baro-VNAV systems, procedure NA below -16°C or above 54°C. When local altimeter setting not received, use TOL altimeter setting: increase LPV DA to 978 feet and all visibilities $\frac{3}{8}$ SM; increase LNAV/VNAV DA to 1196 feet and all visibilities $\frac{3}{8}$ SM; increase all MDA 100 feet and LNAV visibility Cat C and D $\frac{1}{4}$ SM and Circling visibility Cat C and D $\frac{1}{2}$ SM.

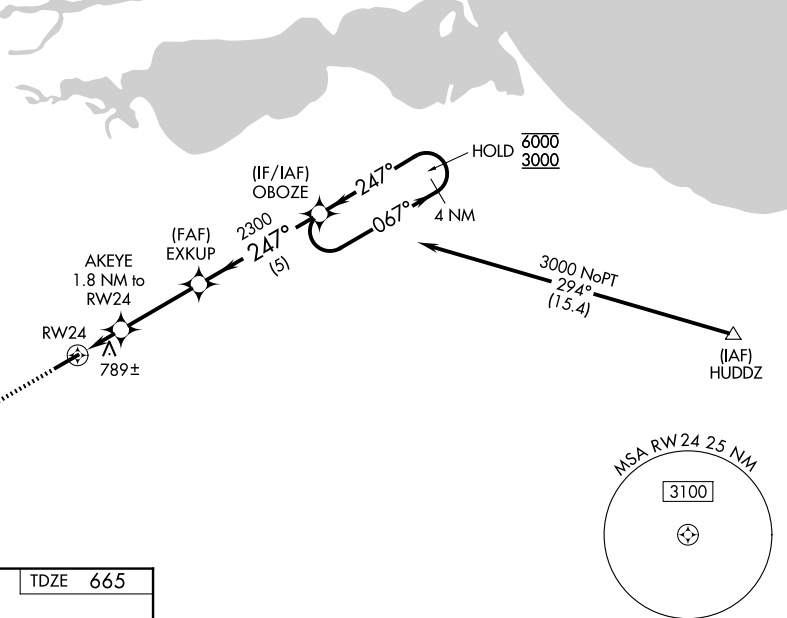
MISSED APPROACH:
Climb to 3000 direct ZUFIL and hold.

AWOS-3P
119.575

TOLEDO APP CON
126.1 307.0

UNICOM
123.05 (CTAF) 0

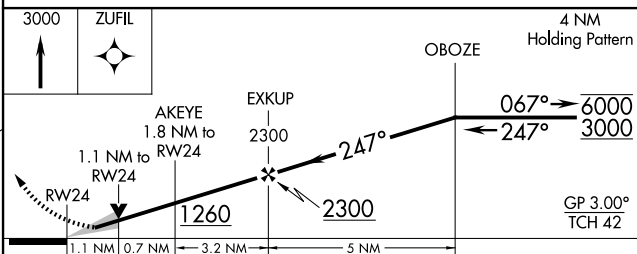
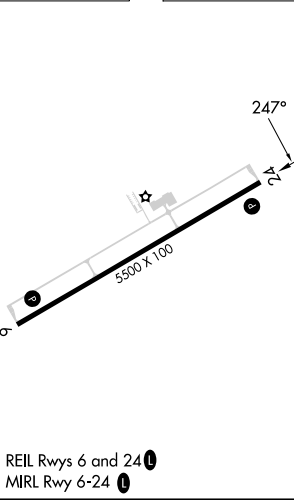
MISSED APCH FIX



EC-2, 11 JUN 2026 to 09 JUL 2026

EC-2, 11 JUN 2026 to 09 JUL 2026

ELEV	665	TDZE	665
------	-----	------	-----



CATEGORY	A	B	C	D
LPV DA	885- $\frac{3}{4}$		220 (300- $\frac{3}{4}$)	
LNAV/VNAV DA	1103-1 $\frac{1}{2}$		438 (500-1 $\frac{1}{2}$)	
LNAV MDA	1040-1	375 (400-1)	1040-1 $\frac{1}{8}$	375 (400-1 $\frac{1}{8}$)
CIRCLING	1120-1 455 (500-1)	1160-1 495 (500-1)	1380-2 715 (800-2)	1380-2 $\frac{1}{4}$ 715 (800-2 $\frac{1}{4}$)