

WAAS CH 82717 W25A	APP CRS 246°	Rwy Ldg TDZE Apt Elev	5003 1411 1411
--	------------------------	-----------------------------	---

RNAV (GPS) RWY 25

LEE COUNTY (ØVG)

▼ Helicopter visibility reduction below ¾ SM NA.
▲ DME/DME RNP-0.3 NA.

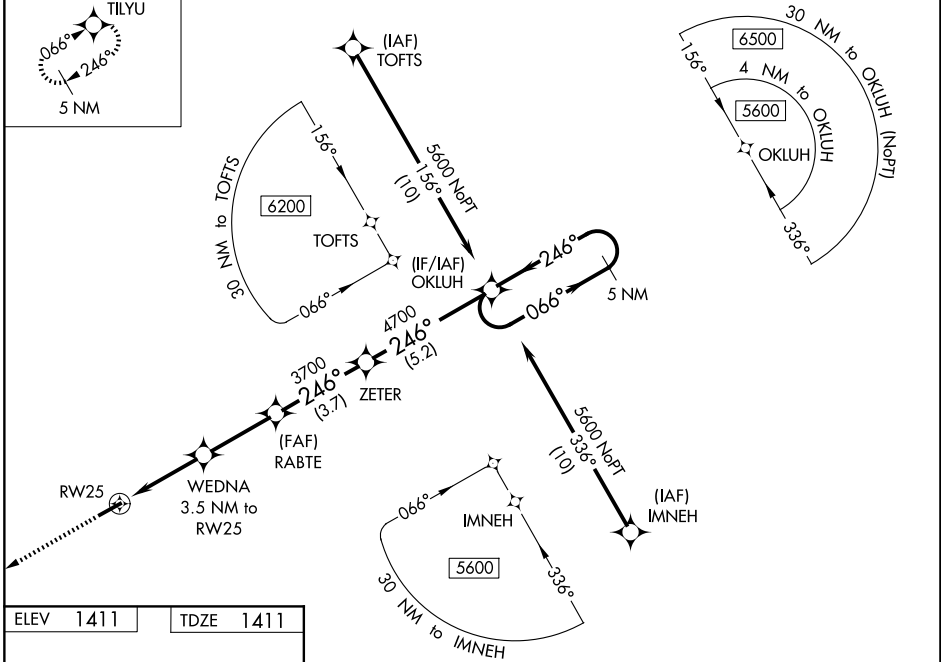
MISSED APPROACH: Climb to 5000 direct TILYU and hold, continue climb-in-hold to 5000.

AWOS-3
120.125

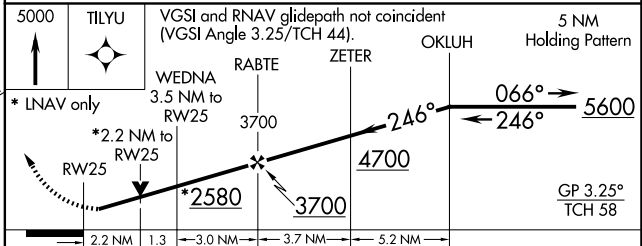
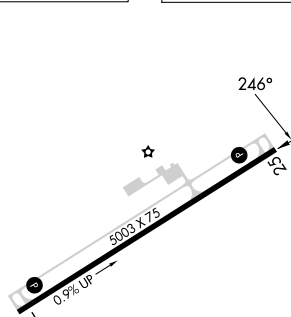
ATLANTA CENTER
127.55 269.50

CTAF
122.90

MISSED APCH FIX



ELEV 1411 TDZE 1411



CATEGORY	A	B	C	D
LPV DA	1714-1 303 (400-1)			NA
RNAV/DA VNAV	2284-3 873 (900-3)			NA
RNAV MDA	2220-1 809 (900-1)	2220-1¼ 809 (900-1¼)	2220-2½ 809 (900-2½)	NA
CIRCLING	2220-1 809 (900-1)		2600-3 1189 (1200-3)	NA

MIRL Rwy 7-25
REIL Rws 7 and 25

NE-3, 11 JUN 2026 to 09 JUL 2026

NE-3, 11 JUN 2026 to 09 JUL 2026