

VORTAC SGF <b>116.9</b> Chan <b>116</b>	APP CRS <b>353°</b>	Rwy Ldg TDZE <b>1092</b> Apt Elev <b>1092</b>	<b>4000</b>
---	------------------------	---	-------------

# VOR/DME RWY 36

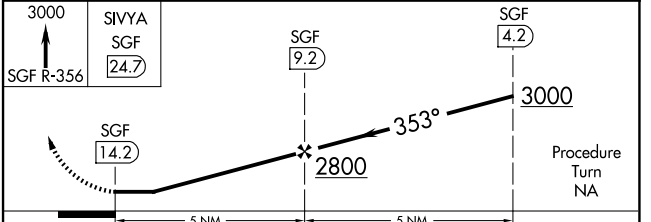
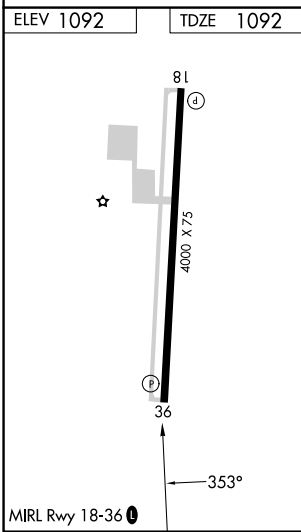
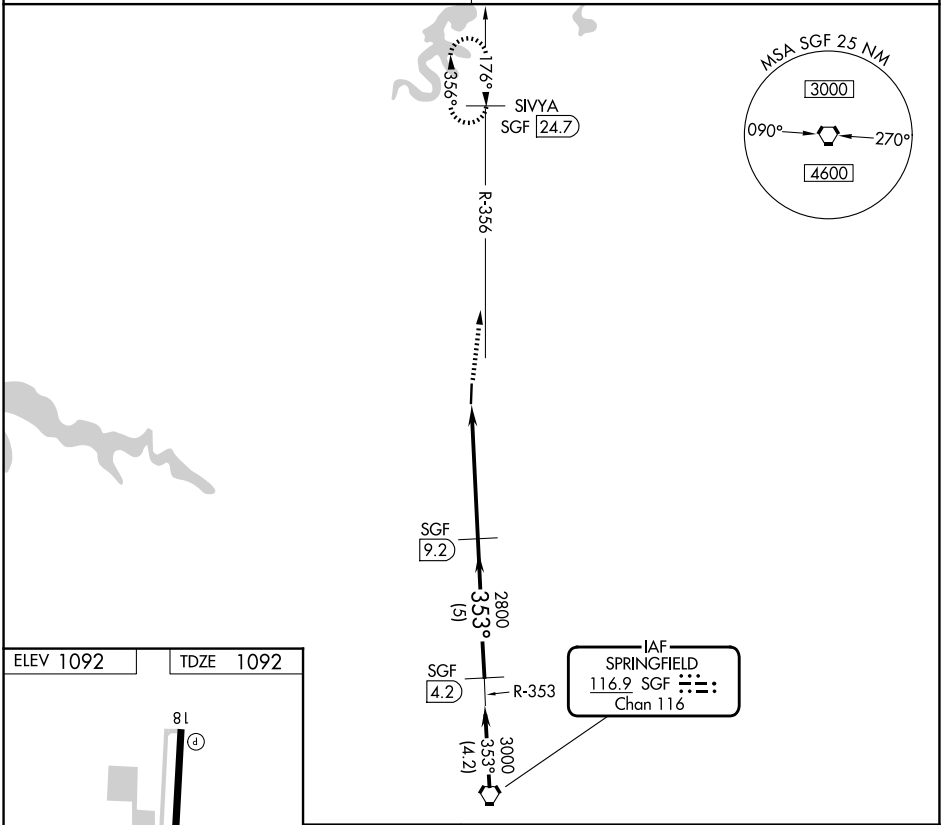
BOLIVAR MUNI (M17)

**NA** Use Springfield-Branson Ntl Altimeter setting. Circling Rwy 18 NA at night.

MISSED APPROACH: Climb to 3000 via SGF R-356 to SIVYA/SGF 24.7 DME and hold.

SPRINGFIELD APP CON **124.95 318.2**

UNICOM **123.0** (CTAF) **0**



CATEGORY	A	B	C	D
S-36	1700-1	608 (700-1)		NA
CIRCLING	1700-1	608 (700-1)		NA

NC-3, 11 JUN 2026 to 09 JUL 2026

NC-3, 11 JUN 2026 to 09 JUL 2026