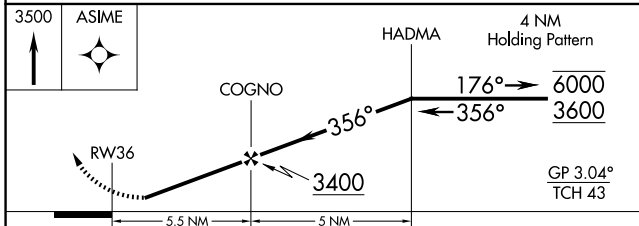
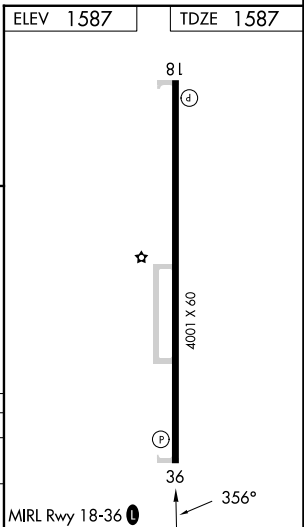
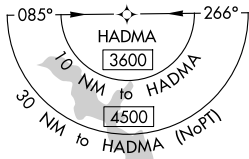
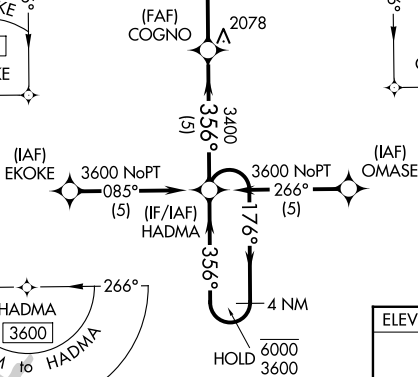
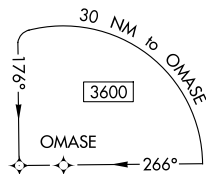
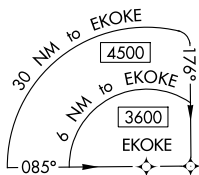
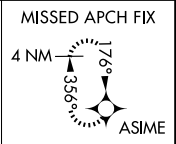


APP CRS	Rwy Ldg	4001
356°	TDZE	1587
	Apt Elev	1587

RNAV (GPS) RWY 36

HINTON MUNI (208)

RNP APCH-GPS.		MISSED APPROACH: Climb to 3500 direct ASIME and hold.
	Rwy 36 helicopter visibility reduction below 3/4 SM NA. Baro-VNAV NA. Use Weatherford altimeter setting.	
OJA AWOS-3PT 118.575	FORT WORTH CENTER 128.4 269.37	UNICOM 123.05 (CTAF) 0



CATEGORY	A	B	C	D
LNAV/VNAV	2211-1 3/4	624 (700-1 3/4)	NA	
LNAV MDA	2220-1	633 (700-1)	NA	

SC-1, 11 JUN 2026 to 09 JUL 2026

SC-1, 11 JUN 2026 to 09 JUL 2026